



ROGERS STATE
UNIVERSITY

WELCOME TO THE HILLCAT NATION!



Profile: Public regional university offering master's, bachelor's and associate degrees



Founded:
1909



Mascot:
Hillcat



University colors:
Navy and Red



Number of students:
About 3,200



Total faculty:
203 (93 full-time)



Student to faculty ratio:
16 to 1



Female students:
61%



Male students:
39%



Accreditation:
Higher Learning Commission



Campus Locations:
Claremore, Bartlesville, Pryor and RSU Online



GEARED FOR YOUR SUCCESS

RSU is designed around proven factors that make your college experience meaningful. We are personal in every aspect: small classes, attentive professors, a close-knit community, and hands-on learning. RSU has all the opportunities found at the biggest schools in an environment focused on the individual.

- Accomplished faculty are committed to supporting student success
- Financial aid and scholarships help our students avoid heavy student loan debt
- More than 99% of our classes have fewer than 50 students enrolled, while most have fewer than 20 students
- RSU degree programs and options meet the needs for Oklahoma's top 10 fastest growing industries

16:1

Student to
Faculty Ratio

>80%

Students Who Apply
for Aid Receive It

>99%

Small
Classes

Top 10

In-Demand
Degrees

PROGRAMS AND MAJORS

MASTER'S DEGREE

Business Administration, M.B.A.

- Option: Accounting 
- Option: Business Analytics 
- Option: Health Care Management 
- Option: Management 
- Option: Sport Management 

Community Counseling, M.S.

- ↳ Focus Area: Addictions
- ↳ Focus Area: Aging/Gerontology
- ↳ Focus Area: Child/Adolescence
- ↳ Focus Area: Marriage and Family Studies
- ↳ Focus Area: General

BACHELOR'S DEGREE

Allied Health Sciences, B.S.

- Option: Pre-Athletic Training
- Option: Pre-Physical Therapy
- Option: Pre-Occupational Therapy

Applied Technology, B.T.

- Option: Cybersecurity and Information Assurance 
- Option: National Security for Information Technology 
- Option: Unmanned Aircraft Systems 

Biology, B.S.

- Option: General Biology
- Option: Environmental Conservation
- Option: Medical/Molecular

Business Administration, B.S.

- Option: Accounting 
- Option: Entrepreneurship
- Option: Finance 
- Option: Human Resources Management
- Option: Management 
- Option: Marketing 
- Option: Supply Chain Management

Business Information Technology, B.S.

- Option: Computer Network Administration 
- Option: Software Development and Multimedia 
- Option: Game Development
- Option: Esports

Chemical Engineering, B.S.

Communications, B.A.

- Option: Broadcasting and New Media
- Option: Communication Arts
- Option: Strategic Communications

Community Counseling, B.S.

- ↳ Focus Area: Addictions
- ↳ Focus Area: Aging/Gerontology
- ↳ Focus Area: Child/Adolescence
- ↳ Focus Area: Marriage and Family Studies
- ↳ Focus Area: General

Elementary Education, B.S. 

Environmental Studies, B.A. 

General Studies, B.G.S.

History, B.A.

- Option: American History
- Option: General History
- Option: Military History

Justice Administration, B.S.

- Option: Collegiate Officer Program (C.O.P.)
- Option: Cyber Investigation
- Option: Law/Justice

Liberal Arts, B.A.

- Option: English 
- Option: Global Humanities 

Nursing (BSN), B.S.

Nursing (RN2BSN), B.S. 

Organizational Leadership, B.S.

- Option: Business Studies 
- Option: Liberal Studies 
- Option: Social Studies 

Political Science, B.A.

- Option: American Government
- Option: Public Administration
- Option: International Relations

Social Science, B.S.

- Option: Environmental Studies
- Option: Psychology
- Option: Sociology

Social Studies Education B.A. 

Sport Management, B.S.

- Option: Sports Business
- Option: Fitness Management

Visual Arts, B.F.A.

- Option: Graphic Design
- Option: Multimedia
- Option: Photographic Arts
- Option: Studio Art

ASSOCIATE DEGREE

Accounting, A.A. 

Applied Technology, A.A.S. 

- Option: Advanced Manufacturing
- Option: Health Sciences
- Option: Information Technology
- Option: Process Technology 
- Option: Professional Services
- Option: Unmanned Aircraft Systems

Biological Science, A.S.

Business Administration, A.A. 

Computer Science, A.S. 

Criminal Justice Studies, A.A.

- Option: Collegiate Officer Program (C.O.P.)
- Option: Law/Justice

Elementary Education, A.A. 

Liberal Arts, A.A.

- Option: General 
- Option: English 
- Option: English (Secondary Education) 
- Option: Native American Studies

Physical Science, A.S.

- Option: Chemistry
- Option: Engineering/Physics/Math
- Option: Geology

Secondary Education, A.A.

- Option: Social Studies

Social Science, A.A.

- Option: Psychology 
- Option: Sociology 

CERTIFICATES

Career Technology and Education

Cybersecurity and Information Assurance 

MINORS

Art

Art History

Biology

Broadcasting and New Media

Business Administration 

Chemistry

Communication Arts

Computer Science 

Creative Writing

Criminal Justice – COP

Cybersecurity and Information Assurance 

Educational Studies (Cameron University @ RSU) 

English 

Environmental Studies 

Esports

Geography

Graphic Design

History

Honors

Humanities

International Relations

Justice Administration

Military History

Military Science (GOLD)

National Securities Studies

Native American Studies

Nonprofit Administration

Philosophy

Political Science

Psychology

Public Administration

Social Entrepreneurship

Sociology

Spanish

Sport Management

Strategic Communications

Technical Writing

 Degree may be completed entirely online

 Degree provided through Cameron University

Rogers State University, in compliance with all applicable Federal and State laws and regulations, does not discriminate on the basis of race, color, national origin, sexual orientation, genetic information, sex, age, religion, disability, political beliefs, or status as a veteran in any of its policies, practices, or procedures. This includes but is not limited to admissions, employment, housing, financial aid, and educational services. This publication, printed by Rogers State University. Last Revision: 7/23



CLAREMORE



BARTLESVILLE



PRYOR



A CAMPUS FULL OF LIFE AND OPPORTUNITY

See for yourself why RSU is where you belong! An in-person campus tour allows you to experience our classrooms, visit with professors, tour athletic facilities, explore campus housing and learn more about college life right here on the Hill.

RSU Claremore provides the complete college experience where you can live on campus, participate in student-led activities, enjoy the thrill of NCAA Division II athletics – all while earning a degree from one of RSU's many high quality academic programs. Additional branch campuses in Pryor and Bartlesville also offer welcoming environments to pursue your coursework. **Schedule a campus tour at www.rsu.edu/visit or call 918-343-7999.**



BRAIDEN LANSER ENVIRONMENTAL CONSERVATION

“RSU’S small, family-like atmosphere makes it easy and fun to engage with both fellow students and professors.”





FINANCIAL AID AND SCHOLARSHIPS

A college education is the most important investment you will ever make and the benefits from this investment will last you a lifetime. At RSU we are firmly committed to ensuring that all students are able to attend college, regardless of their financial situation. Our financial aid team awards millions of dollars each year to make sure RSU students are able to succeed in their pursuit of a university degree.

FRESHMAN SCHOLARSHIPS

RSU awards Merit Scholarships to freshman students who maintain full-time enrollment (12+ credit hours per semester).

Use the following formula to see your scholarship amount (High School GPA x 12.5) + (ACT x 1.38889) = SCORE

If your score is 88+, you earned a Tier 1 scholarship of \$2,500/year for four years

If your score is 82-87, you earned a Tier 2 scholarship of \$2,000/year for four years

If your score is 76-81, you earned a Tier 3 scholarship of \$1,800/year for four years

If your score is 70-75, you earned a Tier 4 scholarship of \$1,500/year for four years

REQUIREMENTS

Must be a U.S. citizen, Oklahoma resident, enrolled as a full-time degree seeking student and a first-time incoming freshman.

>80% STUDENTS APPLYING FOR FINANCIAL AID RECEIVE ASSISTANCE.





COMPOSITE COST

	Oklahoma Residents	Nonresidents
Tuition and Fees (for 12 or more hours)	\$3,800.00	\$8,130.00
Books and Supplies	\$1,200.00	\$1,200.00
TOTAL	\$5,000.00	\$9,330.00
On-Campus Housing	\$2,350.00 - \$3,265.00	
Meal Plans	\$1,799.00 - \$2,096.00	

NOTE: In-state tuition is available to out-of-state students who take at least one course per semester on campus and/or live on campus at RSU.

*These figures are for 2023-24 for fall or spring semester on-campus courses.



EDGAR ZETINA **BUSINESS ADMINISTRATION**

“RSU offered me opportunities I would not have had at other universities.”

*Effective July 1, 2023, RSU now offers Block Tuition for all full-time students. Oklahoma residents and those who qualify for resident tuition who enroll in 12 or more hours will be billed \$3,800 for tuition and mandatory fees regardless of the total number of hours. Nonresident students who enroll in 12 or more hours will be billed \$8,130 for tuition and mandatory fees. Block tuition will allow students who wish to graduate more quickly to take more hours. For example, a student who completes 12 hours per semester will require on average 10 semesters to complete their degree requirements. A student who completes 15 hours per semester will complete their degree on average in eight semesters potentially graduating a full year earlier.



**ROGERS STATE
UNIVERSITY**
LIBRARIES

24/7 LIBRARY RESOURCES



ACADEMIC ENRICHMENT PROGRAMS

Did you know that Rogers State University is home to not just one, but two academic enrichment programs? Our Honors Program and President's Leadership Class offer different opportunities to students interested in enhancing their college experience.

The **Honors Program** at RSU provides an atmosphere where you can challenge yourself academically and maximize your college learning experience.



In addition to specially designed Honors courses, students in the Honors Program receive a generous scholarship package that fully covers tuition, fees, books, on-campus housing, and an approved meal plan. Honors Requirements: 26+ ACT, 3.5+ GPA, on-campus interview

The **President's Leadership Class (PLC)** is focused on developing your leadership skills and community involvement.



In addition to leadership classes and community service projects, the PLC has a \$10,000 annual scholarship for each of its members. PLC Requirements: 21+ ACT, 3.0+ GPA, on-campus interview





STUDENT HOUSING

RSU Residential Life offers full-time Hillcats modern living spaces ideally suited for staying close to classes and the social activities that make the college experience memorable.

Student apartment complexes offer a unique array of amenities, including:

- Furnished rooms with full kitchens or kitchenettes
- WiFi in every room
- Laundry facilities
- Private apartments and suites available with nearby parking
- Paid utilities
- 24/7 Security provided by RSU Campus Police
- Swimming pool, basketball court, volleyball courts and a theater room



ALAINA ORBAN COMMUNICATIONS

“My favorite part about RSU is the dorm life. The friends I made in the freshman dorms have been a constant source of support for the last four years.”



NATIONAL CHAMPIONS



HILLCAT ATHLETICS

Athletics provide an opportunity for student-athletes to develop important life skills while giving the university at large a rallying point for social growth and shared experience.

RSU currently competes in:

- Baseball and Softball
- Men's and Women's Basketball
- Men's and Women's Cross Country
- Men's and Women's Golf
- Men's and Women's Soccer
- Men's and Women's Track and Field
- Cheer and Dance



RSU SOFTBALL NATIONAL CHAMPIONS

RSU's softball team claimed the school's first NCAA national championship in 2022. The Hillcats also won their first MIAA conference title.



RSU RADIO

CAMPUS RADIO STATION RUN BY STUDENTS



RSUTV
PUBLIC TELEVISION

STUDENTS GET REAL-WORLD EXPERIENCE



CAMPUS ORGANIZATIONS

Whatever your interests, RSU has a student organization to help you pursue them. With more than 40 organizations and the opportunity to create new ones, RSU students are encouraged to pursue their passions. The campus also has an exciting array of intramural sports, student leadership opportunities and Greek life.

- Alpha Chi (NATIONAL COLLEGE HONORS SOCIETY)
- Alpha Sigma Alpha Sorority (ΑΣΑ)
- Alpha Sigma Tau Sorority (ΑΣΤ)
- American Advertising Federation (AAF)
- Amps, Volts, and Currents (PRYOR)
- Association of International Students (AIS)
- Baptist Collegiate Ministry (BCM)
- Bass Fishing Team
- BioChem Club
- Brothers and Sisters of Excellence (BSE)
- Campus Activities Team (CAT)
- Casual Gaming Association
- Chi Alpha (ΧΑ)
- College Democrats
- College Republicans
- Criminal Justice Society (CJS)
- Environmental Conservation Club (ECOclub)
- FUSION
- Ignite Campus Ministry
- Kappa Phi
- National Comm. Assoc. Honor Society (Lambda Pi Eta)
- National Society of Leadership and Success
- Native American Student Association (NASA)
- NEDA Campus Warriors
- Oklahoma Aspiring Educators Assoc. (OAEA)
- Phi Delta Theta
- Pre-Dental Club
- Pre-Professional Health Club (PPHC)
- President's Leadership Class (PLC)
- Psi Chi (International Honor Society in Psychology)
- RSU Pride
- RSU Guard Officer Leadership Dev. (GOLD)
- Sexual Health Org. & Outreach (SHOO)
- Social Justice League (SJJL)
- Spanish Club
- Student Ambassador Program
- Student Ath. Advisory Comm. (SAAC)
- Student Art Association (SAA)
- Student Broadcasting Association (SBA)
- Student Government Association (SGA)
- Student Theatre Organization (STO)
- Student Veterans Association (SVA)
- Student Writing Organization (SWO)
- Tri Beta National Biological Honor Society

From **Welcome Week** and **Big Tent Day** to **Homecoming**, there is fun to be had and friends to be made.



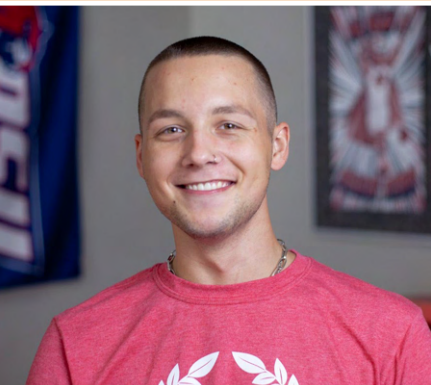
OKLAHOMA LEADER IN COMPETITIVE ESPORTS



BEYOND THE CLASSROOM | STUDY ABROAD

Knowledge, opportunity and understanding transcend national and cultural boundaries. RSU's Center for Studies-at-Large is committed to providing a globally competitive education. The center provides opportunities to expand students' concepts of globalization across all boundaries of education, communications and language. To advance international learning, scholarship, respect and leadership, the Center for Studies-at-Large pursues the following objectives:

- Cultivate the continued growth of language programs
- Support cultural and ethnic studies
- Promote faculty and student exchange programs
- Facilitate international student enrollment



GABE SEILER PSYCHOLOGY

"RSU is a great place - a home for everyone. You can expand your worldview, right here in Claremore."



WHAT ARE YOU WAITING FOR? APPLY TODAY!

Applying and gaining admission to RSU is easy. We strive to make the process as streamlined as possible with a few simple steps.

- ✓ No essay questions
- ✓ No application fee
- ✓ No minimum GPA
- ✓ ACT/SAT scores not required for admission

SUBMIT YOUR ONLINE APPLICATION TODAY AT WWW.RSU.EDU/APPLY



RSU ACCOLADES

**No. 6 ranking among Top Public Schools in the West and
No. 14 ranking among Western Regional Colleges**

- US News and World Report 2022

No. 4 ranking as a Best Value School in the West

- US News and World Report 2022

No. 5 Best College or University in Oklahoma

- US News and World Report 2023

More than half of our graduates have no student debt

National leader in producing nurses with a bachelor's degree

Highest ranked regional university in Oklahoma

- College Consensus 2022

2022 NCAA Division II Softball National Champions



RogersStateU | #HillcatNation | #ClapClapClaw

➔ **SCHEDULE A VISIT!**

RSU OFFICE OF ADMISSIONS | 1701 W. Will Rogers Blvd. | Claremore, Oklahoma 74017
918-343-7999 | www.rsu.edu/visit