

INSTITUTIONAL FACT BOOK

2010 Edition

ROGERS STATE UNIVERSITY
Claremore, Oklahoma

Office of Institutional Research,
Planning, and Assessment



RSU Institutional Fact Book

The information contained in the *Institutional Fact Book* is collected from several institutional offices. The enrollment and faculty data are based on the preliminary data stored after the last day to drop courses with no grade record which is traditionally the end of the second week of classes. The tuition information is provided by the Office of the Bursar and the fiscal data is provided by the Budgeting and Accounting Department.

Please note that, to the extent possible, the data presented on the following pages represent snapshots taken at the same time of the academic year. In some instances, however, variations in reporting cycles have limited our ability to do so. For this reason, the reader who attempts to cross-reference certain data tables may find discrepancies which not due to inaccuracies in the data.

Prepared by
Michelle Canan
Research Analyst
Institutional Research, Planning and Assessment
October 2010

Table of Contents

Introduction	6
Degrees Offered by Level	8
RSU Fast Facts	10
Organization Chart	13
Strategic Planning Engine 2010-2015	14
Student Clubs and Organizations	15
Athletics	15
Glossary of Terms	16
Glossary of Funding Terms	17
Unduplicated Head Count and FTE	18
Total Semester Hours	18
Duplicated Head Count by Site	19
Unduplicated Head Count by Site	19
Head Count by Gender and Level	20
Concurrent High School Student Head Count	21
Unduplicated Head Count by Age	21
Unduplicated Head Count by Goal	22
Unduplicated Head Count by Race/Ethnicity	22
Average ACT Score for Students Who Submitted Scores	23
Unduplicated Head Count by Major	24
Bachelor	24
Associate in Arts	25
Associate in Science	26
Associate in Applied Science	26
Miscellaneous	27
Degrees Awarded	28
Distribution of Student Enrollment by Credit Load	31
Unduplicated Head Count by County (Oklahoma)	32
Unduplicated Head Count by City (Oklahoma): With Ten or More	34
First-time Freshmen Average ACT Scores	35
First-time Freshmen by High School: With Ten or More	35
First-time Freshmen by City (Oklahoma): With Ten or More	36
First-time Transfers Head Count	37
First-time Transfers by Last Institution Attended: With Five or More	37
Online Head Count	38
Faculty Profile	39
Student to Faculty Ratio	39
Full-time Faculty by Rank	39

Tuition and Fees	40
Funding History	41
Funding History-E&G 1	41
Revenue History	41
E&G I Expenditures by Function	41
Percent of Expenditures by Function	41
Expenditures by Object Category	42
Percent of Budget Expenditures by Object	42
Statements of Cash Flows for the Years Ended June 30	43
Summary of Total Assets, Liabilities, and Net Assets for the Years Ended June 30	43
Holdings of Stratton Taylor Library by Volume Type	44
Summary of Stratton Taylor Library Purchases	44
Claremore Campus	45
Claremore Duplicated Head Count and FTE	45
Claremore Total Semester Hours	45
Claremore Head Count by Gender and Level	46
Claremore Concurrent High School Student Head Count	47
Claremore Head Count by Age	47
Claremore Head Count by Goal	48
Claremore Head Count by Race/Ethnicity	49
Average ACT for Claremore Students Who Submitted Scores	49
Claremore First-time Freshmen Average ACT Scores	50
Claremore First-time Transfers Head Count	50
Claremore Head Count by Major	51
Claremore Head Count by County (Oklahoma)	54
Pryor Campus	56
Pryor Duplicated Head Count and FTE	56
Pryor Total Semester Hours	56
Pryor Head Count by Gender and Level	57
Pryor Concurrent High School Student Head Count	58
Pryor Head Count by Age	58
Pryor Head Count by Goal	59
Pryor Head Count by Race/Ethnicity	60
Average ACT for Pryor Students Who Submitted Scores	60
Pryor First-time Freshmen Average ACT Scores	61
Pryor First-time Transfers Head Count	61
Pryor Head Count by Major	62
Pryor Head Count by County (Oklahoma)	65
Bartlesville Campus	67
Bartlesville Duplicated Head Count and FTE	67

Bartlesville Total Semester Hours	67
Bartlesville Head Count by Gender and Level	68
Bartlesville Concurrent High School Student Head Count	69
Bartlesville Head Count by Age	69
Bartlesville Head Count by Goal	70
Bartlesville Head Count by Race/Ethnicity	71
Average ACT for Bartlesville Students Who Submitted Scores	71
Bartlesville First-time Freshmen Average ACT Scores	72
Bartlesville First-time Transfers Head Count	72
Bartlesville Head Count by Major	73
Bartlesville Head Count by County (Oklahoma)	76
Online Campus	78
Online Duplicated Head Count and FTE	78
Online Total Semester Hours	78
Online Head Count by Gender and Level	79
Online Concurrent High School Student Head Count	80
Online Head Count by Age	80
Online Head Count by Goal	81
Online Head Count by Race/Ethnicity	82
Average ACT for Online Students Who Submitted Scores	82
Online First-time Freshmen Average ACT Scores	83
Online First-time Transfers Head Count	83
Online Head Count by Major	84
Online Head Count by County (Oklahoma)	87

Introduction

- **Administration**

- Dr. Larry Rice, President
 - Dr. Richard Beck, Vice President for Academic Affairs
 - Dr. Ray Brown, Vice President for Economic and Community Development
 - Dr. Danette Boyle, Vice President for Development and Alumni
 - Mr. Tom Volturo, Executive Vice President for Administration and Finance
 - Mr. Mark Meadors, Comptroller/Assistant Vice President for Business Affairs
 - Ms. Linda Andrews, Assistant Vice President for Institutional Research, Planning and Assessment
 - Dr. Tobie Titsworth, Vice President for Student Affairs
 - Mr. Bill Beierschmitt, Provost and Chief Operating Office, Bartlesville Campus
 - Ms. Sherry Alexander, Director, Pryor Campus

- **Established:** 1999 (Previously: Eastern Oklahoma Preparatory Academy, 1909-1917; Oklahoma Military Academy, 1917-1971; Claremore Junior College, 1971-1982; Rogers State College, 1982-1996; Rogers University, 1996-1998)

- **Congressional District:** Second

- **University Accreditation:** The Higher Learning Commission (NCA), North Central Association of Colleges and Schools, and the National League for Nursing Accrediting Commission

- **Carnegie Classification:** Level 4-year or above; Public; Baccalaureate/Associate's Colleges

- **U.S. Department of Education's Central Registry Number:** 1736017987A6

- **FICE Code:** 003168

- **U.S. Department of Education IPEDS Number:** 207661

- **Schools**

- School of Business and Technology
 - School of Liberal Arts
 - School of Mathematics, Science, and Health Sciences

- **Departments**

- Applied Technology
 - Business
 - Sport Management
 - Communications
 - English and Humanities
 - Fine Arts
 - History and Political Science
 - Psychology, Sociology, and Criminal Justice
 - Biology
 - Health Sciences

Mathematics and Physical Sciences

- **Calendar:** Semester
- **Minutes from Tulsa:** 30
- **Known for:** Personal attention, small class sizes, affordability, proximity to Tulsa
- **Classes offered:** on-site at three campuses, online, via television
- **Mascot:** Hillcat
- **University colors:** blue and crimson
- **Unique features:** RSU Radio FM 91.3, RSU Public Television, Innovation Center (economic development and business incubator), RSU Foundation, TRIO student support programs, Child Development Center, 120-acre nature reserve, Oklahoma Military Academy Museum, athletic fields, RSU Police Department, three full-service campuses
- **Admission requirements at a glance:** for bachelor's degree programs, 20 ACT or above or 940 SAT or above, 2.7 high school GPA or above; for associate's degree programs, open admissions; transfer students, 2.0 college GPA or above
- **Total faculty:** 260
- **Female students:** 63 percent
- **Male students:** 37percent
- **Students age 18-25:** 60 percent
- **Students over the age of 25:** 34 percent
- **From Oklahoma:** 96 percent
Out-of-state: 4 percent
- **Cooperative & articulation agreements:** Tulsa Community College, Northeastern Oklahoma A&M College (NEO), Tulsa Technology Centers (all campuses), Northeast Technology Centers (all campuses), Coffeyville (Kan.) Community College, Independence (Kan.) Community College
- **Academic & Leadership Programs:** Honors Program, President's Leadership Council, Washington Center Internship Program, Study Abroad Program, Studies at Large
- **Athletics:** Men's and women's basketball, baseball, softball, men's and women's soccer, men's and women's golf, men's and women's cross country; member of the National Association of Intercollegiate Athletics (NAIA) and Sooner Athletic Conference (SAC)
- **Housing:** On-campus residence hall and student apartments (Claremore campus)
- **Food:** Hillcat Hut, RSU Convenience Store
- **Financial aid:** all forms available; 77 percent of students receive financial aid; application deadline, June 1 for fall semester; average financial aid package, \$7913.00

- **Degrees Offered by Level**

- Bachelor of Arts*

- Communications—Communication Arts Option
 - Communications—Corporate Communications Option
 - Communications—Radio-Television Option
 - Liberal Arts—English Option
 - Liberal Arts—Global Humanities Option
 - Military History*
 - Public Administration—Accounting and Budgeting Option*
 - Public Administration— General Management Option*
 - Public Administration— Human Resources Management Option*
 - Public Administration— Public Affairs Option*
 - Public Administration— Research and Analysis Option*

- Bachelor of Fine Art*

- Visual Arts—Graphic Design Option
 - Visual Arts—Multimedia Option
 - Visual Arts—Photographic Arts Option*
 - Visual Arts—Studio Art Option

- Bachelor of Science*

- Biology—Environmental Conservation Option
 - Biology—Medical & Molecular Option
 - Business Administration—Accounting Option
 - Business Administration—Entrepreneurship Option
 - Business Administration—Forensic Accounting Option
 - Business Administration— Human Resources Management Option
 - Business Administration—Management Option
 - Business Administration—Manufacturing Management Option
 - Business Administration—Marketing Option
 - Business Information Technology—Computer Network Administration Option
 - Business Information Technology—Software Development & Multimedia Option
 - Business Information Technology—Telecommunications Foundations Option
 - Community Counseling
 - Game Development
 - Justice Administration
 - Nursing
 - Organizational Leadership—Business Studies Focus Area
 - Organizational Leadership—Communication Strategies Focus Area
 - Organizational Leadership—Liberal Studies Focus Area
 - Organizational Leadership—Social Studies Focus Area

- Social Science—Environmental Studies Option*
- Social Science—History Option
- Social Science—Political Science Option
- Social Science—Psychology Option
- Social Science—Sociology Option
- Sport Management
- Bachelor of Technology*
 - Applied Technology
- Associate in Arts*
 - Accounting
 - Business Administration
 - Criminal Justice Studies—COP Option
 - Criminal Justice Studies—Law/Justice Option
 - Elementary Education
 - Secondary Education
 - Liberal Arts—General Option
 - Liberal Arts—English Option
 - Liberal Arts—Native American Studies Option
 - Social Sciences—History Option
 - Social Sciences—Political Science Option
 - Social Sciences—Psychology Option
 - Social Sciences—Sociology Option
- Associate in Science*
 - Biological Science
 - Computer Science
 - Physical Science
 - Physical Science—Chemistry Option
 - Physical Science—Engineering/Physics/Math Option
 - Physical Science—Geology Option
- Associate in Applied Science*
 - Applied Technology
 - Emergency Medical Services
 - Nursing
 - Nursing—Bridge NREMT-Paramedic/LPN to RN Option

*Pending approval by the Oklahoma State Regents for Higher Education.

RSU Fast Facts

- RSU is a dynamic, progressive university widely recognized for its high-quality academic programs, distance learning options, and high-technology learning environment.
- Rogers State University is one of the fastest-growing universities in Oklahoma. In fall 2010, over 4,300 students enrolled at RSU. Since RSU was accredited as a four-year university in 2000, enrollment has grown by over 94 percent (based on student credit hours.)
- RSU is the only public four-year, residential university in the Tulsa area and is located near several major Tulsa high-technology employers and the Tulsa International Airport.
- RSU was granted continued accreditation from the Higher Learning Commission of the North Central Association of Colleges and Schools without further required evaluation for 10 years – a rarity in higher education and a major accomplishment achieved by few universities.
- RSU has implemented a wide variety of new bachelor degree programs in high-demand areas such as business administration, communications, and nursing, as well as unique disciplines such as game development, justice administration, sport management and military history*. RSU is one of a few universities in Oklahoma to offer both bachelor and associate degrees.
- In 2005, RSU relocated its Bartlesville campus to a historic nine-story downtown building, enabling the university to offer more classes, more degree programs, and more services for area residents. The building is presently undergoing major renovations to accommodate new bachelor's degree programs such as business and nursing and the expansion of student services.
- RSU has completed a major \$1.3 million expansion of its Pryor campus, doubling the size of its facility, providing additional classrooms, laboratories, and student-focused amenities. RSU is the only university serving the Pryor and Mayes County area.
- RSU recently opened its new \$13 million Centennial Center – a state-of-the-art, two-level, 50,000 square-foot facility that combines a variety of student programs under one roof, serves as a central location for students to study and socialize, and provides a focal point for the RSU campus in Claremore.
- RSU recently completed renovation of Baird Hall doubling its size to 57,000 square feet. Baird Hall now contains classrooms equipped with Smart Boards, a performance studio and an amphitheater-style outdoor classroom. Baird Hall always provided a location for the university's art gallery, and when the building reopened, it boasted a new gallery for RSU students and faculty artists, as well as visiting artists, to exhibit their work. Those entering the main plaza entrance on the southeast

**Pending approval by the Oklahoma State Regents for Higher Education.*

corner of the building will be greeted by a six-foot-tall statue of Will Rogers, the area's iconic folk hero. It is also the headquarters for four academic departments including the Department of Communications, Department of English and Humanities, Department of Fine Arts and Department of History and Political Science. The RSU/Cameron Education Program and Honors Program are also located in Baird Hall.

- RSU has transformed its main campus in Claremore through several new building and renovation projects, including the state-of-the-art Stratton Taylor Library, on-campus student living community, several athletic fields and the Innovation Center, a business incubator. All major historic buildings on the Claremore campus have been completed renovated. Preparatory Hall and Meyer Hall are listed on the National Register of Historic Places. RSU's beautiful main campus also features a military museum, an art gallery, Will Rogers Auditorium, two lakes, a 120-acre nature conservatory, amphitheater, and nature trails for the community.
- The Claremore campus is accentuated with some of the largest and most elaborate sculptures located on any university campus in Oklahoma, including sculptures of George Washington, Thomas Jefferson, and Abraham Lincoln.
- RSU is the only university in Oklahoma to operate a full-power public television station, reaching more than 1 million viewers across Oklahoma and surrounding states. The university also operates a radio station which serves as a learning laboratory for communications students.
- RSU operates its own radio station, RSU Radio (KRSC) 91.3 FM, which can be heard in Claremore, Tulsa, and across northeast Oklahoma. RSU Radio is the only alternative college radio station on a campus in Oklahoma. Much of the programming is produced and hosted by RSU students.
- Five endowed faculty chairs have been established at RSU. The private gifts funding these faculty chairs have been matched dollar for dollar by the Oklahoma State Regents for Higher Education's Endowment Trust Fund. RSU's endowed faculty chairs are: the Kunz Endowed Chair in Communications, funded by Warner Brothers (WB) television; the Sarkeys Endowed Chair in Business Information Technology, funded by the Sarkeys Foundation; the John W. Norman Endowed Chair in Business Information Technology, funded by anonymous donors; the Oliver Dewey Mayor Endowed Chair, funded by the Oliver Dewey Mayor Foundation for an endowed faculty position at RSU's campus in Pryor; and an Endowed Chair in Nursing.
- RSU is dedicated to providing programs and activities to foster student development outside the classroom. The Office of Student Affairs provides services to promote student development, diversity, campus activities, career services, and more. Nearly 30 student organizations are active on campus.
- The RSU Student Health Center is located in Downs Hall on the Claremore campus. The center provides health care for students, faculty, and staff for treating minor

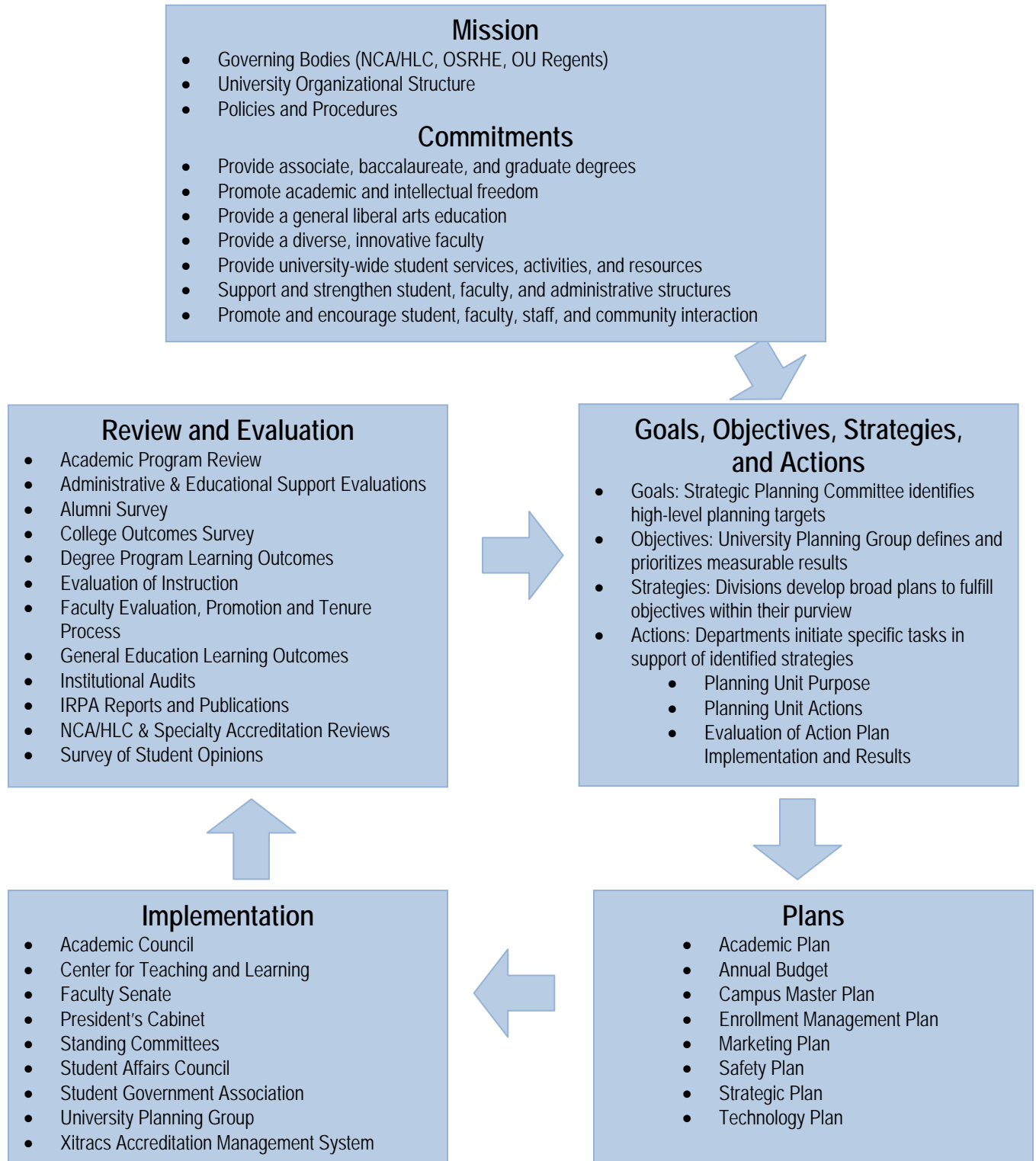
injuries and illnesses, as well as providing individual, group, and family counseling for students.

- RSU's Innovation Center is a 7,000-square-foot facility that houses a business incubator and provides office space for several economic development organizations. Established in 2002, the Innovation Center fosters regional economic development and addresses the educational needs of business and industry.
- RSU's emergency medical technology program is one of only two college-level paramedic programs in the state of Oklahoma and the only such program in northeast Oklahoma.
- RSU has a \$2.2 million off-campus equestrian center that houses the Bit by Bit Therapeutic Horseback Riding Program and the RSU Rodeo Team. The Frank and Wanda Sanders Family Trust donated 23 acres of land for the facility, which is located just off U.S. Highway 169 five miles south of Oologah. Bit by Bit is a cooperative program between RSU and Oologah-Talala Public Schools to promote physical and mental health for disabled children and adults through horseback riding.
- The Oklahoma Military Academy Museum, located on the second floor of Meyer Hall on the RSU campus in Claremore, tells the story of the more than 10,000 cadets who attended the Oklahoma Military Academy (OMA) from 1919 to 1971. The museum, which is open to the public, features thousands of historical documents, photographs, military uniforms, and other memorabilia. The OMA, one of the predecessor institutions of RSU, was known throughout the U.S. as the "West Point of the Southwest." Distinguished graduates include Lt. Gen. William E. Potts, Admiral William J. Crowe, and Col. Edwin P. Ramsey.
- A collection of 57 porcelain sculptures of birds in their natural habitat by Edward Marshall Boehm, one of the leading wildlife artists of the 20th Century, was donated to RSU by Bill and Betty Holman of Claremore. The collection can be viewed by the public at the university's Stratton Taylor Library.

Revised - 10/15/10

Strategic Planning Engine 2010-2015

October 6, 2010



Student Clubs and Organizations

- Alpha Sigma Alpha Sorority (ASA)
- Alpha Sigma Tau Sorority (AST)
- Baptist Collegiate Ministry (BCM)
- Biology Club
- Campus Crusade for Christ (CRU)
- Civitan Club (Bartlesville Campus)
- College Republicans
- Community Counseling Student Association
- Criminal Justice Society
- Emergency Medical Student Services (EMSSA)
- Epsilon Sigma Alpha (ΕΣΑ)
- Native American Student Association (NASA)
- Objectivist Club
- Oklahoma Intercollegiate Legislature (O.I.L.)
- President's Leadership Class (PLC)
- Psi Chi (National Honor Society in Psychology)
- Psychology Club
- Rogers State Gaming Association
- RSU Accounting Society
- RSU Community Counseling
- S.P.Q.R. (Paintball)
- Spanish Club
- Student Art Association
- Student Broadcasting Association (SBA)
- Student Government Association (SGA)
- Student Newspaper Organization (SNO)
- Student Theater Association (STO)
- Students in Free Enterprise (SIFE)
- Student Nursing Association (SNA)
- Student Veteran's Organization
- VOICE

Athletics

- Basketball—Men's and Women's
- Baseball—Men's
- Cross Country—Men's and Women's
- Golf—Men's and Women's
- Soccer—Men's and Women's
- Softball—Women's
- Cheerleading
- Rodeo



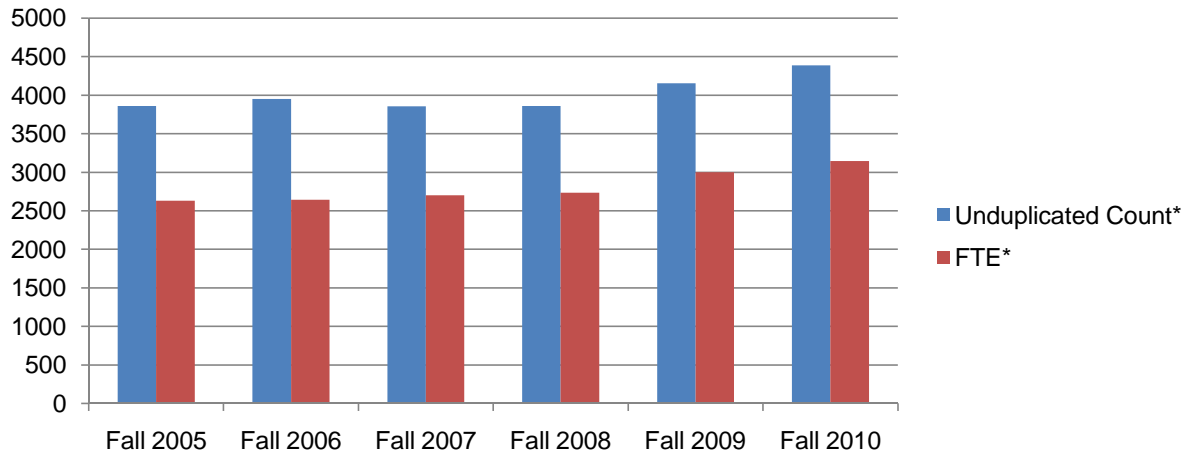
Glossary of Terms

- **Credit (Semester) Hour**—One 50 minute class period per week in a subject for one 16 week semester. Most college level courses are 3-5 credit hours.
- **Audit**—A student not interested in obtaining a course grade, but who is enrolled simply to gain course information. No credit hours will be awarded for “audit” enrollments.
- **Full-time**—A student enrolled in at least 12 credit hours for a regular semester (fall or spring) or 6 credit hours for a summer session.
- **Part-time**—A student enrolled in less than 12 credit hours for a regular semester (fall or spring) or less than 6 credit hours for a summer session.
- **Duplicated Count**—Count includes duplicate student enrollment at more than one campus. For example, if a student is enrolled at Claremore and Pryor, the student will be counted twice.
- **Unduplicated Count**—Each student is counted one time based on a hierarchical standard (Claremore, Online, Pryor, and Bartlesville). If a student is enrolled at Claremore and Pryor, in the unduplicated count, the student will only be included in the Claremore head count.
- **Site**—A campus of Rogers State University (RSU). RSU has four main sites: Claremore, Pryor, Bartlesville, and Online.
- **Classification**
 - **Freshman**—A student who has earned less than 30 credit hours.
 - **Sophomore**—A student who has earned 30-59 credit hours.
 - **Junior**—A student who has earned 60-89 credit hours.
 - **Senior**—A student who has earned 90 or more credit hours.
- **First-time Freshman**—A first time student who has not previously attended college or who has attempted less than 7 college level credit hours excluding credit hours attempted while a concurrent high school student.
- **First-time Transfer**—A first time student who is transferring at least 7 college level credit hours including F's, and excluding W's and credit hours attempted while a concurrent high school student.
- **Concurrent High School Student**—A high school student who meets the Oklahoma State Regents for Higher Education admission requirements allowing enrollment in college level courses.
- **Non-Degree Seeking**—An enrolled student who is not seeking a degree. Usually, the student is admitted without documentation (e.g. transcripts, entry-level testing) and can enroll in up to nine (9) credit hours before required to submit admission documentation.

Glossary of Funding Terms

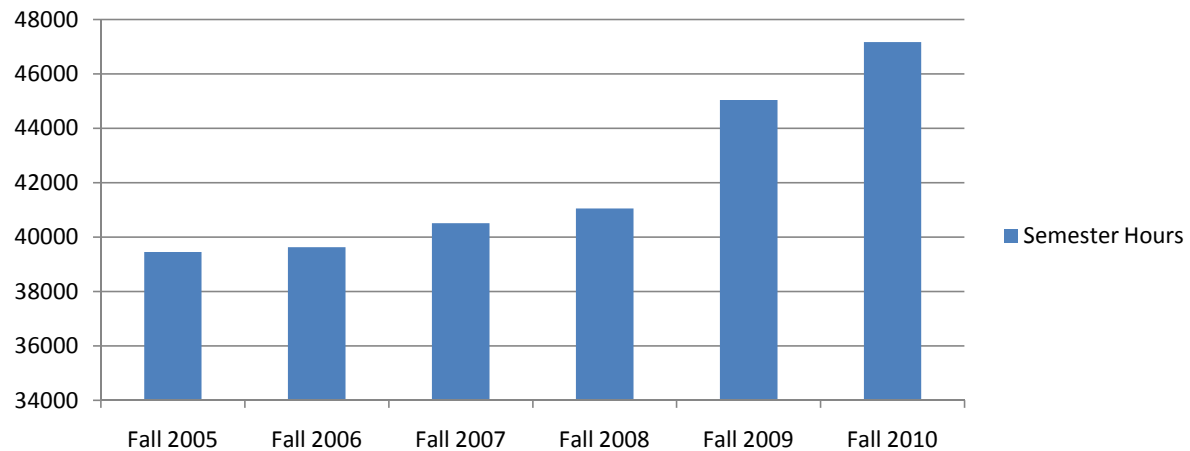
- **E & G 1**—Educational and General 1 fund. Used to support general educational operations, including faculty salaries, operating expenses of instructional departments, library operations and acquisitions, general administration, student services, campus security, operation and maintenance of educational and general buildings and facilities. The Educational and General Fund accounts for all assets and resources are used for financing the instruction and general administration of the university. Typically, state appropriations, tuition, and other income are the revenue sources.
- **E & G 2**—Education and General 2 fund. Used to support programs funded by federal, state and local grants, as well as gifts and donations.
- **Auxiliary**—Fund used to support business type activities including food services, print shop, mail room, child development center and motor pool, and other activities which operate on a fee for service basis.
- **Capital**—Fund used to account for funds obtained for purchase of equipment and building construction.
- **Instruction**—This category includes expenditures for most activities that are part of an institution's instruction program.
- **Public Service**—This category includes funds expended for activities established primarily to provide non-instructional services beneficial to individuals and groups associated with particular sectors of the community outside the institution, such as community service programs (excluding instructional activities), cooperative extension services, conferences, institutes, general advisory services, reference bureaus, radio and television, consulting, and similar non-instructional services.
- **Academic Support**—This category includes funds expended primarily to provide support services for the institution's three primary missions (primary programs)--instruction, research, and public service.
- **Student Services**—This category includes funds expended for the admissions and registrar's offices and for activities whose primary purpose is to contribute to a student's emotional and physical well-being and intellectual, cultural, and social development outside the context of a formal instruction program.
- **Institutional Support**—This category includes expenditures for central executive-level activities involving management and long-range planning for the entire institution, such as the governing board, planning and programming, and legal services; fiscal operations, including the investment office; administrative data processing; space management; and employee personnel and records.
- **Operation and Maintenance of Plant**—This category includes all expenditures of current operating funds for the operation and maintenance of physical plant, in all cases net of amounts charged to auxiliary enterprises, hospitals, and independent operations; expenditures for operations established to provide services and maintenance related to grounds and facilities; utilities, fire protection, and certain types of maintenance expenditures.

Unduplicated Head Count and FTE



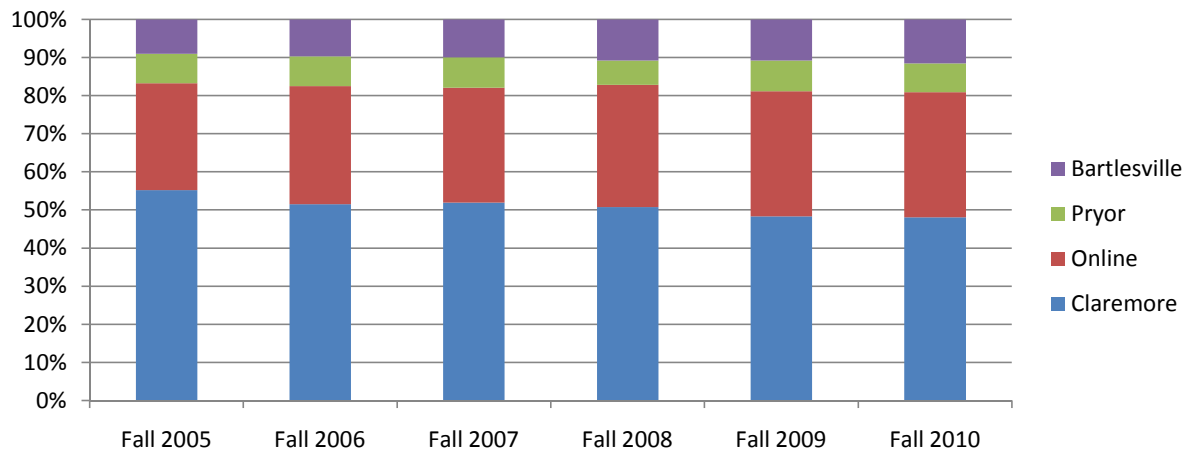
	Fall 2005	Fall 2006	Fall 2007	Fall 2008	Fall 2009	Fall 2010
Unduplicated Count	3861	3952	3855	3858	4154	4386
FTE	2630	2641	2701	2736	3002	3144

Total Semester Hours



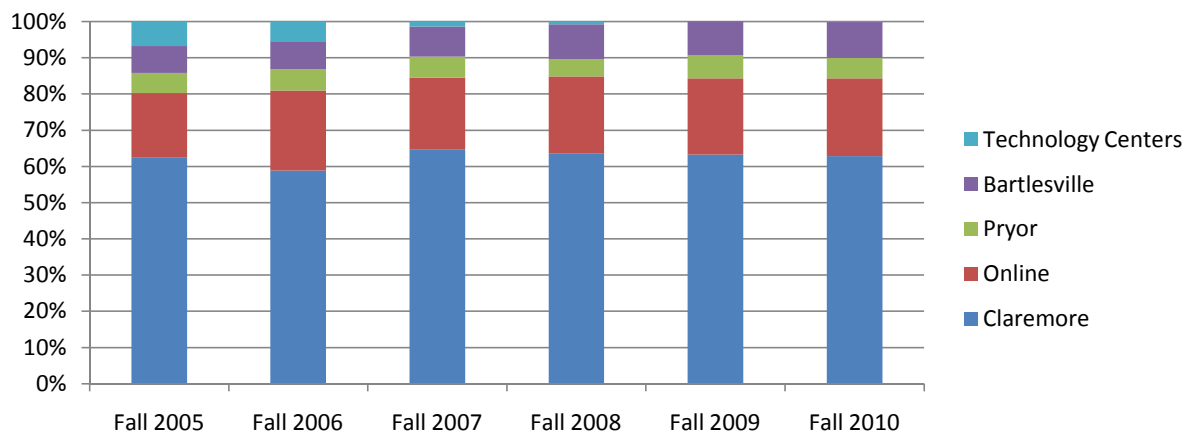
	Fall 2005	Fall 2006	Fall 2007	Fall 2008	Fall 2009	Fall 2010
Semester Hours	39451	39621	40512	41046	45031	47160

Duplicated Head Count by Site



	Fall 2005	Fall 2006	Fall 2007	Fall 2008	Fall 2009	Fall 2010
Claremore	2409	2327	2492	2545	2629	2756
Online	1223	1398	1447	1609	1790	1880
Pryor	339	353	384	322	438	435
Bartlesville	393	438	475	540	586	661
Technology Centers	287	226	90	71	54	101

Unduplicated Head Count by Site



	Fall 2005	Fall 2006	Fall 2007	Fall 2008	Fall 2009	Fall 2010
Claremore	2409	2327	2492	2454	2629	2756
Online	690	872	764	821	874	941
Pryor	215	233	227	182	269	250
Bartlesville	285	304	319	373	382	435
Technology Centers	262	216	53	28	0	4

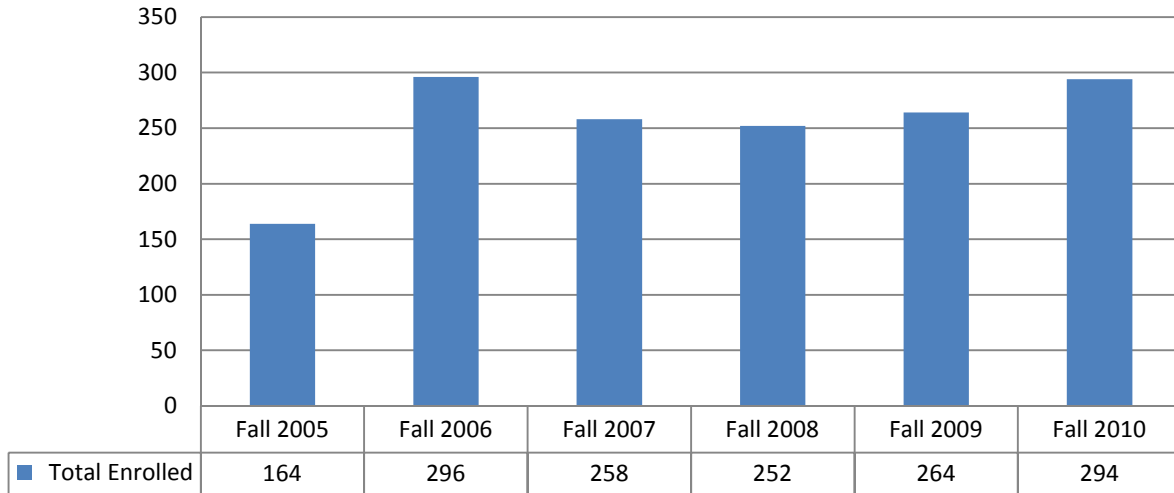
Head Count by Gender and Level

Please note these counts do not include concurrent high school students.

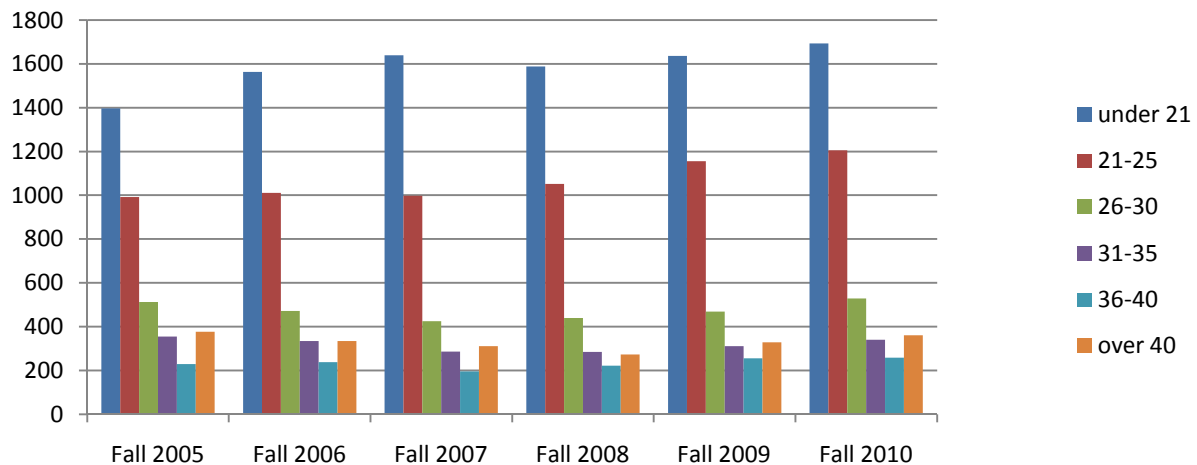
Two-Week Report Counts

	Fall 2005		Fall 2006		Fall 2007		Fall 2008		Fall 2009		Fall 2010	
	Male	Female	Male	Female	Male	Female	Male	Female	Male	Female	Male	Female
Freshmen (FT)	465	777	485	703	476	749	467	692	511	776	495	797
Freshmen (PT)	252	425	261	435	149	325	141	271	125	244	152	241
First-time Freshmen (FT)	265	418	262	337	255	388	251	340	293	437	266	399
First-time Freshmen (PT)	111	129	82	107	44	64	51	63	38	64	52	71
Sophomores (FT)	127	231	130	241	172	296	179	273	206	313	208	327
Sophomores (PT)	99	245	102	225	96	208	81	209	73	192	74	198
Juniors (FT)	75	138	104	146	125	187	141	227	168	252	164	261
Juniors (PT)	73	176	69	187	74	175	81	157	66	181	80	198
Seniors (FT)	82	142	81	122	87	111	120	189	163	224	182	251
Seniors (PT)	136	193	114	186	112	206	106	202	119	239	141	274
Special Non-Degree Seeking (FT)	0	0	0	0	0	0	0	1	0	0	0	0
Special Non-Degree Seeking (PT)	21	40	25	40	23	26	26	43	20	18	22	27
Total Full-time	749	1288	800	1212	860	1343	907	1382	1048	1565	1049	1636
Total Part-time	581	1079	571	1073	454	940	435	882	403	874	469	938

Concurrent High School Student Head Count

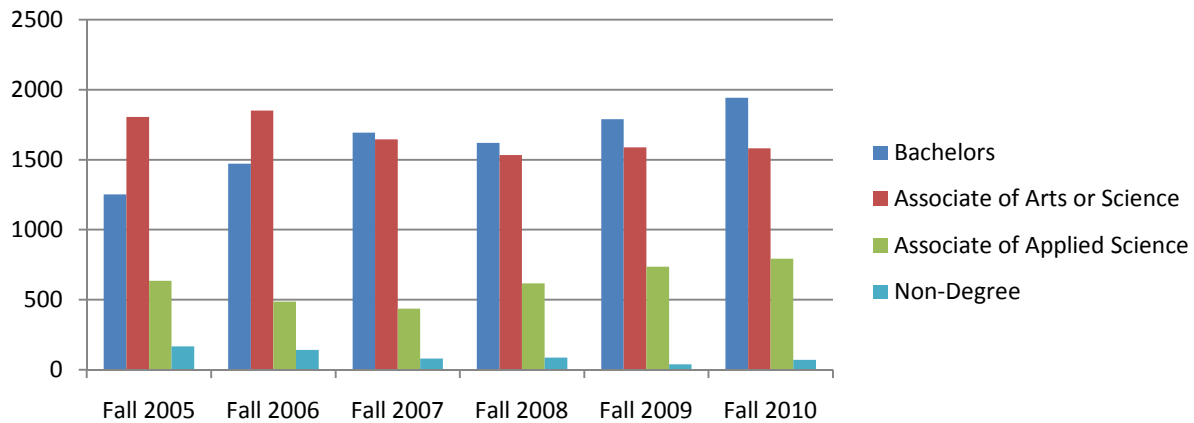


Unduplicated Head Count by Age



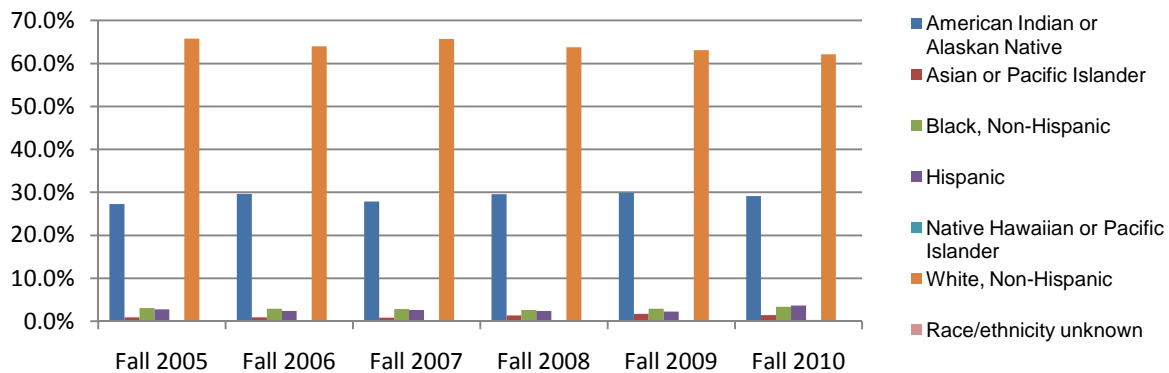
	Fall 2005	Fall 2006	Fall 2007	Fall 2008	Fall 2009	Fall 2010
under 21	1397	1563	1639	1588	1636	1694
21-25	992	1011	998	1052	1155	1205
26-30	512	472	425	439	468	528
31-35	355	334	286	285	311	340
36-40	229	238	196	221	255	258
over 40	376	334	311	273	329	361

Unduplicated Head Count by Goal



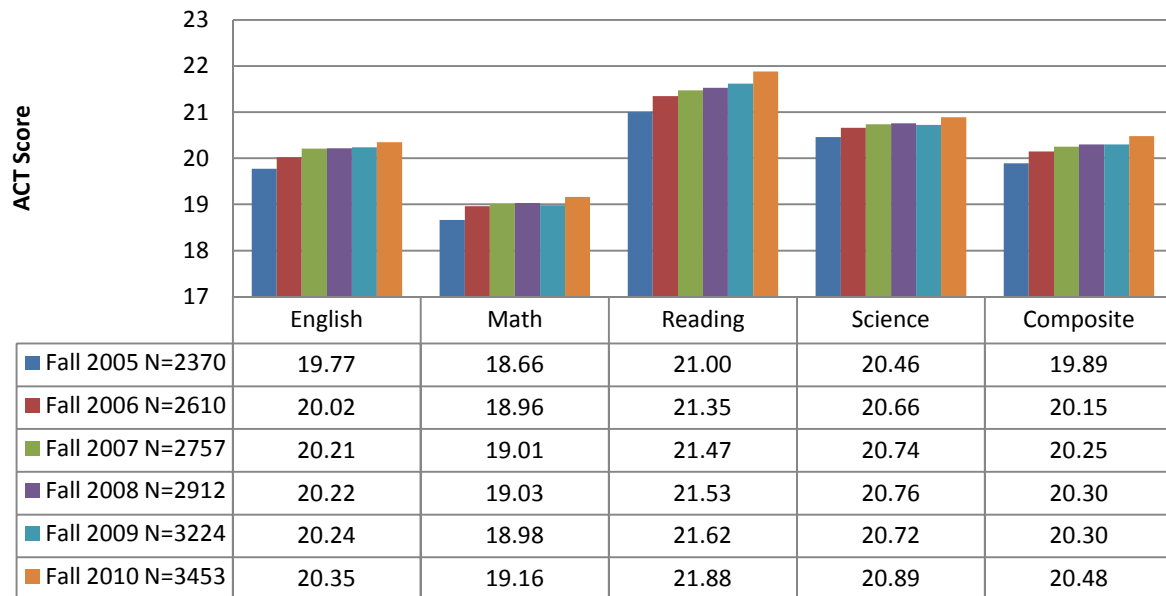
	Fall 2005	Fall 2006	Fall 2007	Fall 2008	Fall 2009	Fall 2010
Bachelors	1252	1472	1693	1619	1789	1942
Associate of Arts or Science	1805	1851	1645	1533	1589	1581
Associate of Applied Science	636	488	436	618	737	792
Non-Degree	166	141	81	88	39	71

Unduplicated Head Count by Race/Ethnicity



	Fall 2005	Fall 2006	Fall 2007	Fall 2008	Fall 2009	Fall 2010
American Indian or Alaskan Native	27.3%	29.7%	27.9%	29.6%	29.9%	29.2%
Asian or Pacific Islander	0.9%	0.9%	0.8%	1.4%	1.7%	1.4%
Black, Non-Hispanic	3.1%	2.9%	2.9%	2.6%	2.9%	3.3%
Hispanic	2.8%	2.4%	2.6%	2.4%	2.2%	3.6%
Native Hawaiian or Pacific Islander	0.2%	0.2%	0.2%	0.2%	0.1%	0.3%
White, Non-Hispanic	65.8%	64.0%	65.7%	63.8%	63.1%	62.2%
Race/ethnicity unknown	0.0%	0.0%	0.0%	0.0%	0.0%	0.0%

Average ACT Score for Students Who Submitted Scores



Unduplicated Head Count by Major

Bachelor			Fall 2005	Fall 2006	Fall 2007	Fall 2008	Fall 2009	Fall 2010
Degree	Code	Major/Option						
BA	114	Communications--BA	34	38	25	29	18	16
		Communications--Communication Arts						
BA	114A	Option	0	0	6	7	7	16
		Communications--Corporate						
BA	114C	Communications Option	16	15	13	17	23	27
		Communications--Radio-Television Option						
BA	114X		17	27	23	33	49	47
BA	109	Liberal Arts--BA	92	127	101	44	33	25
BA	109E	Liberal Arts--English Option	0	0	6	25	36	54
BA	109H	Liberal Arts--Global Humanities Option	0	0	1	5	11	14
BA	123	Public Administration--BA	0	0	0	0	3	7
		Public Administration--Accounting and						
BA	123A	Budgeting Option*	0	0	0	0	0	1
		Public Administration--General						
BA	123M	Management Option*	0	0	0	0	0	2
		Public Administration--Human Resources						
BA	123H	Management Option*	0	0	0	0	0	0
		Public Administration--Pulbic Affairs						
BA	123P	Option*	0	0	0	0	0	0
		Public Administration--Research and						
BA	123R	Analysis Option*	0	0	0	0	0	0
BFA	119	Visual Arts--BFA	0	0	18	24	12	12
BFA	119G	Visual Arts--Graphic Design Option	0	0	17	27	43	54
BFA	119M	Visual Arts--Multimedia Option	0	0	5	6	16	22
BFA	119P	Visual Arts--Photographic Arts Option*	0	0	0	0	0	3
BFA	119A	Visual Arts--Studio Arts Option	0	0	21	22	31	49
BS	112	Biology--BS	14	18	27	19	16	4
		Biology--Environmental Conservation						
BS	112E	Option	55	63	58	52	56	63
BS	112M	Biology--Medical/Molecular Option	152	164	198	212	229	243
BS	113	Business Administration--BS	32	90	75	63	43	22
		Business Administration--Accounting						
BS	113A	Option	87	112	147	139	169	166
		Business Administration--Entrepreneurship						
BS	113E	Option	0	2	12	10	15	19
		Business Administration--Forensic						
BS	113F	Accounting Option	0	0	0	1	8	12
		Business Administration--Human						
BS	113H	Resources Option	3	18	31	30	38	44
		Business Administration--Management						
BS	113M	Option	180	216	186	165	177	183
		Business Administration--Manufacturing						
BS	113G	Management Option	0	0	0	0	3	6
		Business Administration--Marketing Option						
BS	113K		0	1	35	49	74	77
BS	108	Business Information Technology--BS	45	51	32	22	13	6
		Business Information Technology--						
BS	108N	Computer Network Administration Option	21	32	45	48	58	59

		Business Information Technology-- Software Development & Multimedia Option	32	35	30	33	43	41
BS	108S							
		Business Information Technology-- Telecommunications Foundations Option	0	2	1	4	4	2
BS	108T							
BS	120	Community Counseling--BS	0	0	9	24	48	50
BS	117	Game Development--BS	0	15	28	27	32	37
BS	115	Justice Administration--BS	46	59	54	66	59	53
		Justice Administration--Law Enforcement Option	0	7	0	2	0	0
BS	115L							
BS	118	Nursing--BS	0	0	20	12	19	21
BS	118U	Nursing (not admitted to the program)	0	0	15	35	35	57
BS	775	Organizational Leadership--BS	0	0	5	25	42	27
		Organizational Leadership--Business Focus	0	0	2	2	9	18
BS	775B							
		Organizational Leadership-- Communications Focus	0	0	0	0	1	1
BS	775C							
		Organizational Leadership--Social Studies Focus	0	0	0	0	0	1
BS	775S							
BS	110	Social Science---BS	28	17	6	3	4	1
		Social Science--History & Political Science Option†	30	37	24	13	3	0
BS	110H							
		Social Science--Psychology & Sociology Option†	141	155	102	47	19	5
BS	110P							
BS	110T	Social Science--History Option	0	0	6	13	17	23
BS	110L	Social Science--Political Science Option	0	0	3	7	13	16
BS	110Y	Social Science--Psychology Option	0	0	44	78	92	124
BS	110S	Social Science--Sociology Option	0	0	2	14	16	24
BS	122	Sport Management--BS	0	0	47	73	83	99
BT	107	Applied Technology--BT	71	77	92	49	68	74
		Bachelor Degree Total	1096	1378	1572	1576	1788	1916

Associate of Arts

Degree	Code	Major/Option	Fall 2005	Fall 2006	Fall 2007	Fall 2008	Fall 2009	Fall 2010
AA	043	Accounting	57	56	54	58	77	76
AA	001	Art-General Option†	13	19	13	13	4	2
AA	001D	Art-Graphic Design Option†	0	0	9	4	2	0
AA	001G	Art-Graphics Option†	25	22	7	1	1	0
AA	001H	Art-Art History Option†	0	1	0	2	0	0
AA	053	Broadcasting†	2	2	1	1	0	0
AA	004	Business Administration	219	206	150	148	154	165
AA	121	Criminal Justice Studies	0	0	6	6	10	3
AA	121C	Criminal Justice Studies - COP Option	0	0	14	15	36	42
		Criminal Justice Studied - Law/Justice Option	0	0	22	26	20	39
AA	121L							
		Education - Elementary/Early Childhood Option†	156	183	78	26	15	2
AA	011							
AA	011E	Elementary Education	0	0	138	145	174	167
AA	096	Law & Justice Careers†	57	71	10	5	1	1
AA	116	Legal Assisting†	0	9	17	7	6	2
AA	023	Liberal Arts	87	69	52	41	22	44
AA	023E	Liberal Arts--English Option	7	6	5	7	12	16

AA	023N	Liberal Arts-Native American Studies Option	1	4	1	0	2	5
AA	053X	Radio-Television†	24	15	3	1	0	0
AA	012	Secondary Education	87	90	68	53	71	67
AA	019	Social Science	18	17	11	7	8	2
AA	019H	Social Sciences--History Option	2	3	5	4	5	2
AA	019G	Social Sciences--Political Science Option	5	2	2	5	4	4
AA	019P	Social Sciences--Psychology Option	70	48	50	41	37	47
AA	019S	Social Sciences--Sociology Option	10	10	6	12	7	10
		Associate of Arts Total	840	833	722	628	668	696

Associate of Science

Degree	Code	Major/Option	Fall 2005	Fall 2006	Fall 2007	Fall 2008	Fall 2009	Fall 2010
AS	003	Biological Sciences	29	31	38	41	50	46
AS	003B	Biological Sciences-Biology Option†	24	25	11	4	0	0
AS	003M	Biological Sciences-Medical/Molecular Option†	52	22	4	3	1	0
AS	097	Computer Science	54	48	37	40	37	46
AS	028	Physical Science	1	2	7	6	4	5
AS	028C	Physical Science-Chemistry Option	9	8	13	7	5	6
AS	028E	Physical Science-Engineering, Physics, Math Option	17	31	24	18	27	30
AS	028G	Physical Science-Geology Option	4	3	5	4	7	6
AS	028P	Physical Science-Pre-Engineering Option†	18	4	3	0	0	0
AS	033N	Pre-Nursing†	405	366	270	10	3	0
		Associate of Science Total	613	540	412	133	134	139

Associate of Applied Science

Degree	Code	Major/Option	Fall 2005	Fall 2006	Fall 2007	Fall 2008	Fall 2009	Fall 2010
AAS	111	Applied Technology-AAS	128	35	32	45	41	30
AAS	111B	Applied Technology--Business, Information, & Engineering Option	37	29	32	15	6	22
AAS	111C	Applied Technology-Construction Option	9	11	6	1	0	3
AAS	111M	Applied Technology-Manufacturing Option	20	23	6	8	3	4
AAS	111P	Applied Technology-Public & Health Services Option	120	146	30	6	6	11
AAS	111A	Applied Technology-Telecommunications Option†	2	2	2	1	0	0
AAS	111T	Applied Technology-Transportation Management Option	5	3	1	0	0	0
AAS	094E	Emergency Medical Services	65	90	77	77	86	93
AAS	054	Nursing	151	110	149	59	114	76
AAS	054B	Nursing-Bridge NREMT-Paramedic/LPN to RN	11	10	2	5	15	7
AAS	054U	Nursing (not admitted to program)	0	0	86	396	466	546
		Associate of Applied Science Total	548	459	423	613	737	792

Misc

Degree	Code	Major/Option	Fall 2005	Fall 2006	Fall 2007	Fall 2008	Fall 2009	Fall 2010
	777	Non-Degree Seeking	166	141	80	88	40	71
	888	Undecided	530	580	643	820	787	761
		Misc Total	696	721	723	908	827	832

*Pending approval by the Oklahoma State Regents for Higher Education.

‡Deleted

Degrees Awarded

Degree	Major	2005- 2006	2006- 2007	2007- 2008	2008- 2009	2009- 2010
Associate in Arts						
	Accounting	7	14	6	11	18
	Art‡	5	1	1	2	0
	Art-Graphic Design Option‡	0	0	0	1	2
	Art-Graphics Option‡	5	1	1	2	0
	Art-Art History Option‡	0	0	1	0	0
	Business Administration	41	34	30	27	42
	Criminal Justice Studies-COP Option	0	0	0	0	4
	Criminal Justice Studies-Law/Justice Option	0	0	2	7	2
	Education-Elementary/Early Childhood Option‡	6	9	16	1	0
	Elementary Education	0	0	3	25	35
	Law/Justice Careers-Criminal Justice Option‡	4	3	2	1	0
	Legal Assisting‡	1	0	1	4	2
	Liberal Arts-General	8	6	14	15	10
	Liberal Arts-English Option	0	0	1	1	2
	Liberal Arts-Native American Studies Option	0	1	1	1	0
	Radio-Television‡	1	0	2	0	0
	Secondary Education	12	12	11	13	8
	Social Sciences-History Option	1	0	0	2	2
	Social Sciences-Psychology Option	11	8	10	8	4
	Social Sciences-Sociology Option	0	2	3	1	1
	Subtotal Associate in Arts	102	91	105	122	132
Associate in Science						
	Biological Science	0	0	3	4	2
	Biological Science-Biology Option‡	3	1	1	0	0
	Biological Science-PreMedical/Dental Option‡	0	1	0	0	0
	Computer Science	6	4	4	5	5
	Physical Science-Chemistry Option	1	0	4	1	2
	Physical Science-Engineering/Physics/Math Option	1	2	0	0	0
	Physical Science-Geology Option	0	0	0	0	1
	Physical Sci-Pre-Engin/Physics Opt‡	3	1	0	0	0
	Pre-Nursing	2	3	1	0	0
	Subtotal Associate in Science	16	12	13	10	10
Associate in Applied Science						
	Applied Technology	6	3	10	8	15
	Applied Technology-Busi, Inform & Engring Opt	2	1	0	0	0
	Applied Technology-Public & Health Svcs Option	0	0	1	0	0
	Applied Technology-Transportation Mgmt Option	1	0	0	0	0
	Emergency Medical Services	5	15	14	10	18
	Legal Assistant	4	3	0	0	0

Nursing	54	44	45	58	46
Nursing-Bridge Paramedic/LPN to RN	9	5	6	3	9
Police Science-Collegiate Officer Program Option‡	3	5	3	0	0
Police Science-Law Enforcement Option‡	0	3	0	0	0
Subtotal Associate in Applied Science	84	79	79	79	88

Bachelor of Arts

Communications-Communication Arts Option	0	0	0	1	1
Communications-Corporate Communications Option	0	3	3	1	6
Communications-Radio-Television Option	1	10	4	4	2
Liberal Arts	16	8	16	5	2
Liberal Arts-English Option	0	0	0	2	5
Liberal Arts-Global Humanities Option	0	0	0	2	5
Subtotal Bachelor of Arts	17	21	23	15	21

Bachelor of Fine Art

Visual Arts-Graphic Design Option	0	0	1	3	6
Visual Arts-Studio Art Option	0	0	2	3	6
Subtotal Bachelor of Fine Art	0	0	3	6	12

Bachelor of Science

Biology-Environmental Conservation Option	6	8	11	6	12
Biology-Medical/Molecular Option	6	13	11	16	22
Business Administration-Accounting Option	9	18	15	16	23
Business Administration-Entrepreneurship Option	0	0	1	0	2
Business Administration-Forensic Accounting Option	0	0	0	0	2
Business Administration-Human Resources Mgmt Opt	2	2	9	5	6
Business Administration-Management Option	34	23	25	26	25
Business Administration-Marketing Option	0	0	1	11	13
Business Info Tech-Computer Network Admin Option	7	1	3	6	5
Business Info Tech-Sftwr Dev & Multimedia Option	13	12	6	4	4
Community Counseling	0	0	0	3	3
Justice Administration	5	3	5	9	12
Justice Administration-Law Enforcement Option	1	3	1	3	1
Nursing	0	0	0	1	1
Organizational Leadership-Business Studies Focus	0	0	0	2	16
Organizational Leadership-Liberal Studies Focus	0	0	0	1	0
Social Science-History Option	0	0	0	0	2

Social Science-History & Political Science Option‡	3	3	6	4	4
Social Science-Political Science Option	0	0	0	0	1
Social Science-Psychology Option	0	0	1	6	8
Social Science-Psychology & Sociology Option‡	35	23	16	14	6
Social Science-Sociology Option	0	0	0	2	2
Sport Management	0	0	0	1	11
Subtotal Bachelor of Science	121	109	111	136	181
Bachelor of Technology					
Applied Technology	27	26	22	32	14
Subtotal Bachelor of Technology	27	26	22	32	14
Total Degrees Awarded	367	338	356	400	458

Distribution of Student Enrollment by Credit Load

N Hours	Fall 2005	Fall 2006	Fall 2007	Fall 2008	Fall 2009	Fall 2010
0.00	35	25	23	18	13	23
1.00	9	15	5	5	3	8
2.00	0	0	0	0	0	0
3.00	361	403	364	349	342	342
4.00	83	62	53	64	37	53
5.00	29	22	13	12	19	15
6.00	532	640	490	465	467	532
7.00	121	127	139	109	130	127
8.00	129	103	90	86	78	94
9.00	320	315	290	269	273	323
10.00	123	155	111	124	129	111
11.00	82	71	60	65	50	73
12.00	765	792	847	862	1036	1044
13.00	488	510	552	566	672	681
14.00	277	237	230	241	239	272
15.00	308	294	343	360	357	378
16.00	120	115	173	166	200	198
17.00	25	34	33	41	47	56
18.00	51	27	36	51	58	45
19.00	2	3	3	4	4	10
20.00	1	2	0	0	0	0
21.00	0	0	0	1	0	1

Unduplicated Head Count by County (Oklahoma)

	Fall 2005	Fall 2006	Fall 2007	Fall 2008	Fall 2009	Fall 2010
Adair (1)	8	12	18	8	11	13
Alfalfa (2)	0	0	1	0	0	0
Atoka (3)	4	1	2	2	0	0
Beaver (4)	0	0	0	0	0	0
Beckham (5)	2	2	2	1	0	1
Blaine (6)	1	2	1	1	1	1
Bryan (7)	1	0	0	0	0	0
Caddo (8)	0	0	2	2	1	1
Canadian (9)	2	0	2	5	5	3
Carter (10)	3	4	1	1	2	2
Cherokee (11)	21	17	27	33	24	28
Choctaw (12)	0	2	4	4	3	2
Cimarron (13)	0	0	0	0	0	0
Cleveland (14)	8	5	6	8	12	11
Coal (15)	0	0	0	0	0	0
Comanche (16)	2	2	3	4	6	3
Cotton (17)	0	0	0	0	0	1
Craig (18)	89	99	100	95	101	83
Creek (19)	86	81	44	35	28	43
Custer (20)	0	1	1	1	1	2
Delaware (21)	53	61	58	51	55	54
Dewey (22)	1	1	1	3	1	3
Ellis (23)	0	0	0	0	0	0
Garfield (24)	5	7	9	7	2	2
Garvin (25)	0	0	0	0	0	1
Grady (26)	3	4	3	2	3	5
Grant (27)	0	0	0	1	0	0
Greer (28)	0	1	0	0	0	0
Harmon (29)	0	0	0	0	0	0
Harper (30)	1	0	0	0	0	0
Haskell (31)	2	2	0	0	0	0
Hughes (32)	1	0	2	1	0	0
Jackson (33)	0	2	2	3	4	2
Jefferson (34)	0	0	0	0	0	0
Johnston (35)	0	1	0	0	0	0
Kay (36)	15	13	10	9	13	15
Kingfisher (37)	0	0	2	2	4	1
Kiowa (38)	0	0	1	1	5	1
Latimer (39)	3	3	3	3	3	2
LeFlore (40)	10	5	8	7	12	8
Lincoln (41)	13	15	9	10	7	5
Logan (42)	1	1	1	2	2	1
Love (43)	0	0	0	1	1	0
McClain (44)	1	0	0	0	2	0
McCurtain (45)	1	3	4	4	5	8
McIntosh (46)	1	5	4	1	4	2
Major (47)	0	0	0	0	0	0

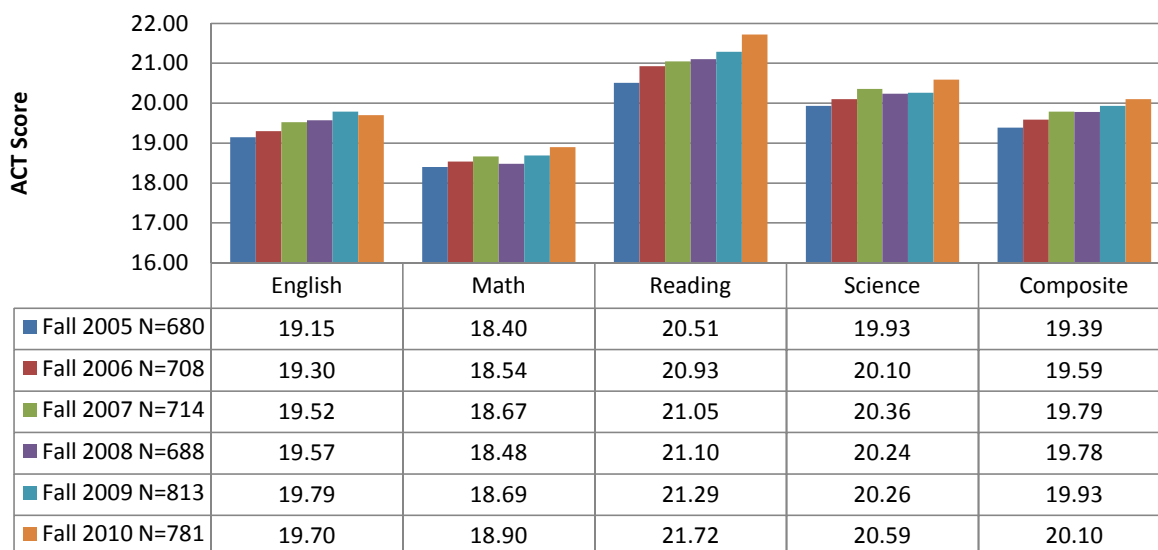
Marshall (48)	0	0	0	0	1	1
Mayes (49)	517	590	526	498	623	640
Murray (50)	0	0	0	0	0	0
Muskogee (51)	16	17	18	15	9	21
Noble (52)	0	0	0	0	0	0
Nowata (53)	97	83	90	94	97	92
Okfuskee (54)	0	0	0	0	0	0
Oklahoma (55)	22	33	22	34	28	36
Okmulgee (56)	11	13	15	18	24	21
Osage (57)	154	142	116	90	105	120
Ottawa (58)	15	23	23	16	15	22
Pawnee (59)	6	9	10	11	10	6
Payne (60)	23	19	8	9	7	5
Pittsburg (61)	3	2	2	2	1	2
Pontotoc (62)	3	3	1	0	0	1
Pottawatomie (63)	6	4	4	3	5	3
Pushmataha (64)	1	0	1	1	0	2
Roger Mills (65)	1	1	2	0	0	0
Rogers (66)	1263	1334	1320	1375	1406	1460
Seminole (67)	2	1	1	2	3	4
Sequoyah (68)	4	5	2	4	3	3
Stephens (69)	2	1	3	1	2	2
Texas (70)	1	1	1	0	0	0
Tillman (71)	1	0	0	0	0	0
Tulsa (72)	728	624	646	585	629	676
Wagoner (73)	67	49	53	58	68	72
Washington (74)	442	510	498	574	624	695
Washita (75)	0	0	2	1	0	0
Woods (76)	1	2	1	1	2	2
Woodward (77)	0	0	3	2	2	1
Unknown (99)	0	0	0	0	0	9
Total	3724	3818	3699	3702	3982	4200

Unduplicated Head Count by City (Oklahoma): With Ten or More

Based on permanent mailing address.

	Fall 2005	Fall 2006	Fall 2007	Fall 2008	Fall 2009	Fall 2010
Claremore	971	980	992	1024	1030	1069
Bartlesville	368	436	416	468	521	589
Pryor	268	309	271	256	312	313
Tulsa	369	273	251	244	256	285
Owasso	142	138	156	177	179	199
Collinsville	92	86	98	101	116	143
Broken Arrow	132	105	120	110	117	130
Inola	97	116	110	126	132	128
Chelsea	86	107	110	101	105	94
Locust Grove	53	67	61	51	79	92
Oologah	62	90	65	79	80	81
Salina	64	68	56	66	70	81
Nowata	69	49	66	66	67	72
Adair	40	42	41	48	60	71
Dewey	47	58	48	62	61	60
Vinita	65	63	73	56	75	57
Catoosa	74	64	62	46	59	56
Chouteau	41	59	61	41	51	54
Skiatook	49	47	42	34	29	38
Talala	31	46	38	27	31	38
Pawhuska	43	43	40	33	42	37
Big Cabin	22	25	23	23	27	29
Barnsdall	19	22	21	15	15	26
Ochelata	19	17	20	26	20	23
Copan	17	16	18	13	13	20
Sapulpa	13	20	14	17	17	19
Coweta	19	13	9	11	13	17
Sand Springs	19	14	17	16	18	17
Oklahoma City	8	7	9	14	11	15
Ramona	6	9	8	17	19	15
Tahlequah	7	9	20	22	9	14
Foyil	10	2	7	7	7	13
Jay	13	18	9	7	9	13
Langley	9	9	8	9	14	13
Bixby	10	10	11	11	7	12
Wann	14	12	12	13	13	12
Wagoner	12	8	6	8	14	11
Sperry	11	10	13	11	9	10
Strang	8	8	11	5	8	10

First-time Freshmen Average ACT Scores



First-time Freshmen by High School: With Ten or More

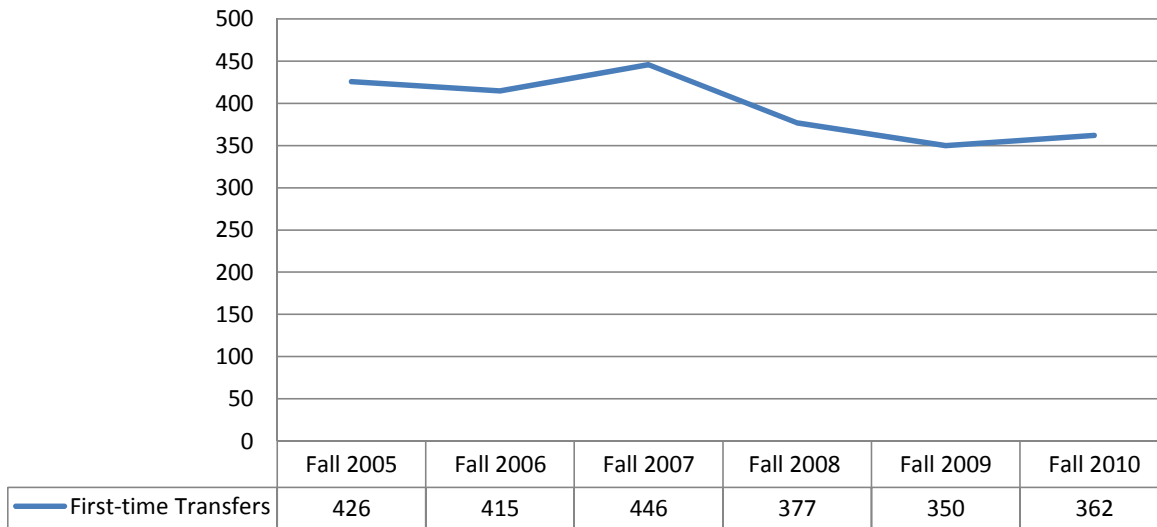
School	Fall 2005	Fall 2006	Fall 2007	Fall 2008	Fall 2009	Fall 2010
Claremore High School, Claremore, OK	78	64	81	83	89	76
Bartlesville High School, Bartlesville, OK	59	62	58	46	60	69
GED	103	87	33	48	60	51
Pryor High School, Pryor	29	37	42	31	41	48
Sequoyah High School, Claremore, OK	34	23	29	31	39	34
Owasso High School, Owasso, OK	36	27	35	32	34	33
Collinsville High School, Collinsville, OK	19	19	18	8	19	23
Dewey High School, Dewey, OK	15	20	8	18	16	23
Oologah High School, Oologah, OK	28	39	25	27	26	19
Chouteau High School, Chouteau, OK	9	18	13	6	12	16
Locust Grove High School, Locust Grove, OK	14	13	14	9	20	16
Verdigris High School, Claremore, OK	13	8	17	18	21	16
Chelsea High School, Chelsea, OK	19	19	12	17	15	15
Inola High School, Inola, OK	22	27	26	29	27	15
Vinita High School, Vinita, OK	11	8	19	8	16	15
Catoosa High School, Catoosa, OK	15	18	16	6	14	14
Foyil High School, Foyil, OK	10	10	9	0	8	14
Salina High School, Salina, OK	14	12	9	23	9	14
Broken Arrow High School, Broken Arrow, OK	19	9	11	17	17	13
Adair High School, Adair, OK	21	18	6	11	30	12
Caney Valley High School, Ramona, OK	4	5	8	9	12	10

First-time Freshmen by City (Oklahoma): With Ten or More

(Based on permanent mailing address.)

City	Fall 2005	Fall 2006	Fall 2007	Fall 2008	Fall 2009	Fall 2010
Claremore	201	169	185	193	215	200
Bartlesville	97	101	84	71	88	107
Pryor	52	65	42	45	64	57
Tulsa	94	39	44	35	37	33
Collinsville	25	23	21	19	26	31
Owasso	32	28	30	29	39	30
Chelsea	24	27	13	21	21	25
Inola	28	29	26	28	24	18
Broken Arrow	26	10	17	20	21	17
Chouteau	8	15	19	5	8	16
Locust Grove	11	16	13	6	16	14
Salina	19	12	10	23	8	14
Adair	13	15	6	10	16	12
Nowata	19	10	16	10	21	12
Vinita	14	11	25	11	18	12
Barnsdall	6	3	9	5	5	11
Skiatook	20	11	3	5	7	10

First-time Transfers Head Count

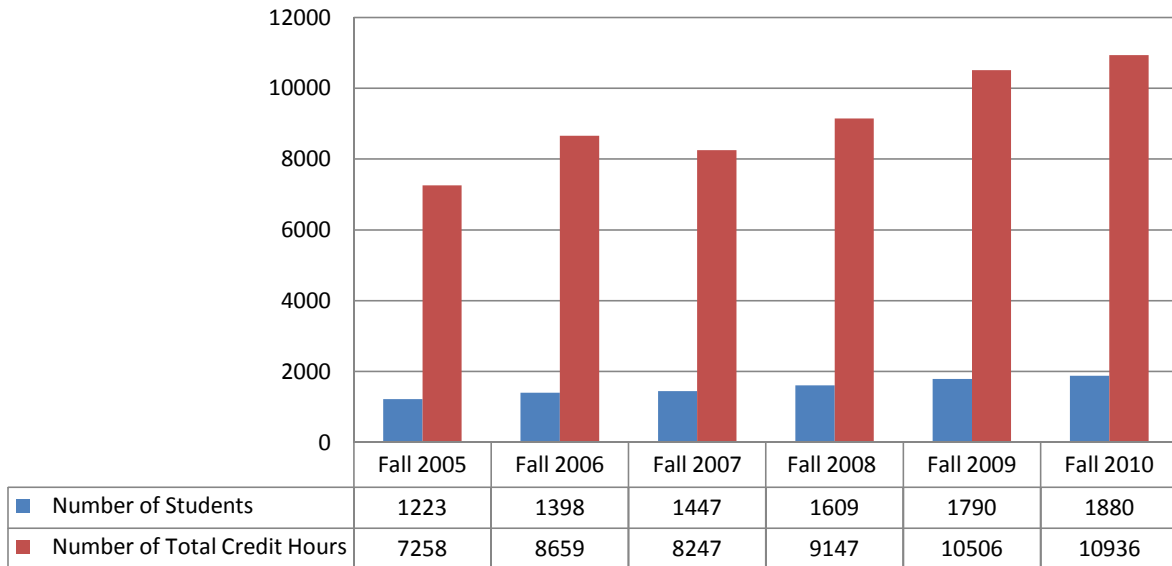


	Fall 2005	Fall 2006	Fall 2007	Fall 2008	Fall 2009	Fall 2010
First-time Transfers	426	415	446	377	350	362

First-time Transfers by Last Institution Attended: With Five or More

School	Fall 2005	Fall 2006	Fall 2007	Fall 2008	Fall 2009	Fall 2010
Tulsa Community College, OK	135	111	124	100	84	107
Northeastern State University, OK	50	42	38	42	28	34
Oklahoma State University (Stillwater), OK	24	21	21	30	23	22
Northeastern Oklahoma A&M College, OK	19	36	40	21	9	16
Northern Oklahoma College, OK	12	14	16	10	11	14
Coffeyville Community College, KS	11	10	20	7	14	8
Oklahoma State University/Okmulgee, OK	9	4	4	6	11	7
University Of Central Oklahoma, OK	14	11	8	9	7	6
University Of Oklahoma, OK	8	7	6	12	10	6

Online Head Count



Faculty Profile

Full-time Faculty

	Total	Members of Groups	Minority	Female	Male	Doctorate or Terminal Degree
Fall 2007	97	10		45	52	55
Fall 2008	98	10		44	54	61
Fall 2009	104	10		44	60	67
Fall 2010	105	13		44	61	69

Part-time Faculty

	Total	Members of Groups	Minority	Female	Male	Doctorate or Terminal Degree
Fall 2007	115	15		81	34	19
Fall 2008	124	15		82	42	16
Fall 2009	141	17		92	49	18
Fall 2010	155	25		108	47	21

Student to Faculty Ratio

	Student to Faculty Ratio	Based on Students	Faculty
Fall 2007	20 to 1	2763	137
Fall 2008	20 to 1	2814	139
Fall 2009	21 to 1	3118	151
Fall 2010	21 to 1	3252	157

Student to Faculty Ratio = ratio of full-time equivalent students (full-time plus 1/3 part time) to full-time equivalent instructional faculty (full time plus 1/3 part time).

Full-time Faculty by Rank

	Professor	Associate Professor	Assistant Professor	Instructor	Lecturer	Total
Fall 2007	11	25	35	25	1	97
Fall 2008	11	24	36	26	1	98
Fall 2009	13	31	34	26	0	104
Fall 2010	14	32	30	28	1	105

Tuition and Fees

		Oklahoma Residents			Nonresidents		
		RSU			RSU		
		RSU Courses	Online Courses	Adult Degree Completion	RSU Courses	Online Courses	Adult Degree Completion
2005-2006	Tuition	\$76.00	\$76.00		\$228.00	\$228.00	
	Fees	\$34.00	\$70.25		\$34.00	\$70.25	
	Credit Hour	\$110.00	\$146.25		\$262.00	\$298.25	
2006-2007	Tuition	\$76.00	\$76.00		\$228.00	\$228.00	
	Fees	\$41.00	\$95.25		\$41.00	\$95.25	
	Credit Hour	\$117.00	\$171.25		\$269.00	\$323.25	
2007-2008	Tuition	\$82.75	\$82.75	\$137.50	\$248.25	\$248.25	\$337.50
	Fees	\$46.00	\$95.25		\$46.00	\$95.25	
	Credit Hour	\$128.75	\$178.00	\$146.00	\$294.25	\$343.50	
2008-2009	Tuition	\$90.95	\$90.95	\$157.25	\$272.85	\$272.85	\$372.50
	Fees	\$50.60	\$99.85		\$50.60	\$99.85	
	Credit Hour	\$141.55	\$190.80	\$157.25	\$323.45	\$372.70	\$372.50
2009-2010	Tuition	\$90.95	\$90.95	\$157.25	\$272.85	\$272.85	\$372.50
	Fees	\$50.60	\$99.85		\$50.60	\$99.85	
	Credit Hour	\$141.55	\$190.80	\$157.25	\$323.45	\$372.70	\$372.50
2010-2011	Tuition	\$95.95	\$95.95	\$165.00	\$287.85	\$287.85	\$391.00
	Fees	\$53.45	\$133.45		\$53.45	\$133.45	
	Credit Hour	\$149.40	\$229.40	\$165.00	\$341.30	\$421.30	\$391.00

Funding History

Funding History-E&G I

Year	State Allocation	Revolving (Tuition/Fees)	Beginning Reserves	Total Available	Budget	% of Total Available
2005-2006	\$12,452,785	\$8,844,187	\$4,200,604	\$25,497,576	\$22,952,164	90.0%
2006-2007	\$14,135,323	\$10,090,005	\$4,274,845	\$28,500,173	\$25,659,979	90.0%
2007-2008	\$14,809,571	\$10,377,143	\$5,176,209	\$30,362,923	\$28,282,512	93.1%
2008-2009	\$15,050,842	\$12,571,559	\$4,560,245	\$32,182,646	\$30,325,157	94.2%
2009-2010	\$15,648,616	\$12,921,037	\$4,402,850	\$32,972,503	\$31,284,772	94.9%

***FY10 state allocation includes federal stimulus proceeds of \$1,128,952

Revenue History

Revenues	Financial Stmt. Actual 04/05	Financial Stmt. Actual 05/06	Financial Stmt. Actual 06/07	Financial Stmt. Actual 07/08	Financial Stmt. Actual 08/09
E & G 1	\$19,662,378	\$21,309,594	\$23,996,880	\$26,162,641	\$28,039,339
E & G 2	\$5,323,149	\$5,562,400	\$4,559,795	\$4,382,275	\$6,633,508
Auxiliary	\$2,346,339	\$2,934,970	\$3,805,826	\$4,568,012	\$4,498,053
Capital	\$1,189,616	\$1,176,829	\$2,264,881	\$3,457,318	\$2,271,476
Total Revenue	\$28,521,482	\$30,983,793	\$34,627,382	\$38,570,246	\$41,442,376

E & G I Expenditures by Function

Function	Financial Stmt. Actual 04/05	Financial Stmt. Actual 05/06	Financial Stmt. Actual 06/07	Financial Stmt. Actual 07/08	Financial Stmt. Actual 08/09
Instruction	\$9,061,959	\$9,755,072	\$10,114,755	\$10,356,658	\$12,225,644
Research	\$0	\$0	\$0	\$0	\$0
Public Service	\$276,826	\$284,568	\$342,071	\$390,555	\$737,476
Academic Support	\$2,061,130	\$2,057,780	\$2,373,422	\$2,854,039	\$2,657,434
Student Svcs	\$1,526,105	\$1,806,094	\$2,209,495	\$2,796,111	\$2,927,499
Institut. Support	\$2,538,666	\$2,511,196	\$2,722,491	\$3,030,682	\$3,203,862
Physical Plant	\$2,250,369	\$2,279,509	\$3,876,736	\$2,724,870	\$3,736,091
Scholarship	\$992,682	\$1,109,229	\$1,471,873	\$1,814,552	\$2,253,303
Total	\$18,707,737	\$19,803,448	\$23,110,843	\$23,967,467	\$27,741,309

Percent of Expenditures by Function

Function	Financial Stmt. Actual 04/05	Financial Stmt. Actual 05/06	Financial Stmt. Actual 06/07	Financial Stmt. Actual 07/08	Financial Stmt. Actual 08/09
Instruction	48%	49%	44%	43%	44%
Research	0%	0%	0%	0%	0%
Public Service	1%	1%	1%	2%	3%
Academic Support	11%	10%	10%	12%	10%
Student Svcs	8%	9%	10%	12%	11%
Institut. Support	14%	13%	12%	13%	12%
Physical Plant	12%	12%	17%	11%	13%
Scholarship	5%	6%	6%	8%	8%
Total	100%	100%	100%	100%	100%

Expenditures by Object Category

E & G I Expenditures by Object category

Object Code	2004-2005	2005-2006	2006-2007	2007-2008	2008-2009
11000 Faculty Salaries	\$5,239,576	\$5,701,884	\$6,126,420	\$6,654,962	\$6,988,733
12000 Professional Sal.	\$3,342,454	\$3,413,391	\$3,989,716	\$4,500,751	\$4,500,772
13000 Other Salaries	\$2,241,176	\$2,409,438	\$2,583,999	\$2,937,407	\$3,069,977
14000 Benefits	\$3,681,266	\$3,968,699	\$4,418,797	\$5,210,206	\$5,632,134
15000 Professional Svcs.	\$915,944	\$837,504	\$330,938	\$129,369	\$491,800
20000 Travel	\$93,370	\$119,897	\$142,750	\$229,741	\$120,482
30000 Supplies	\$1,350,633	\$1,476,844	\$1,342,254	\$1,779,438	\$3,224,632
40000 Capital	\$0	\$158,604	\$1,916,740	\$0	\$592,999
42000 Library Capital	\$298,281	\$159,699	\$299,374	\$188,159	\$294,054
31300 Utilities	\$552,355	\$448,259	\$487,982	\$522,882	\$572,424
50000 Scholarships	\$992,682	\$1,109,229	\$1,471,873	\$1,814,552	\$2,253,303
60000 Transfers	\$0	\$0	\$0	\$0	\$0
Total	\$18,707,737	\$19,803,448	\$23,110,843	\$23,967,467	\$27,741,309

Percent of Budget Expenditures by Object

Object Code	2004-2005	2005-2006	2006-2007	2007-2008	2008-2009
11000 Faculty Salaries	28%	29%	27%	28%	25%
12000 Professional Sal.	18%	17%	17%	19%	16%
13000 Other Salaries	12%	12%	11%	12%	11%
14000 Benefits	20%	20%	19%	22%	20%
15000 Professional Svcs.	5%	4%	1%	1%	2%
20000 Travel	0%	1%	1%	1%	0%
30000 Supplies	7%	7%	6%	7%	12%
40000 Capital	0%	1%	8%	0%	2%
42000 Library Capital	2%	1%	1%	1%	1%
31300 Utilities	3%	2%	2%	2%	2%
50000 Scholarships	5%	6%	6%	8%	8%
60000 Transfers	0%	0%	0%	0%	0%
Total	100%	100%	100%	100%	100%

Statements of Cash Flows for the Years Ended June 30 (in millions)

	2004	2005	2006	2007	2008	2009
Net cash used by operating activities	(\$10,491)	(\$8,835)	(\$9,858)	(\$16,678)	(\$14,832)	(\$17,863)
State Appropriations	\$11,261	\$11,441	\$12,457	\$18,609	\$19,839	\$21,085
Interest income received	\$22	\$53	\$89	\$135	\$575	\$664
Net cash used by capital & related financing activities	(\$2,544)	(\$1,899)	(\$2,558)	(\$1,494)	\$1,506	(\$7,324)
Net increase in cash & equivalents	(\$1,752)	\$760	\$130	\$572	\$7,088	(\$3,438)
Cash & cash equivalents, beginning of year	\$10,146	\$8,394	\$9,154	\$9,284	\$9,856	\$16,944
Cash & cash equivalents, end of year	\$8,394	\$9,154	\$9,284	\$9,856	\$16,944	\$13,506

Source: RSU annual audits

Summary of Total Assets, Liabilities, and Net Assets for the Years Ended June 30 (in millions)

	2004	2005	2006	2007	2008	2009
Total Assets	\$25,980	\$28,125	\$48,595	\$50,173	\$65,192	\$65,072
Total Liabilities	\$6,068	\$6,620	\$24,948	\$24,644	\$35,578	\$33,380
Total Net Assets	\$19,912	\$21,505	\$23,647	\$25,529	\$29,614	\$31,692

Holdings of Stratton Taylor Library by Volume Type

Volume Type	Jul-08	Jul-09	Jul-10
Print books	77,120	77,650	76,757
Videos	4,992	4,689	2,758
Compact Discs	1,343	1,376	1,202
DVD's	491	562	938

Summary of Stratton Taylor Library Purchases

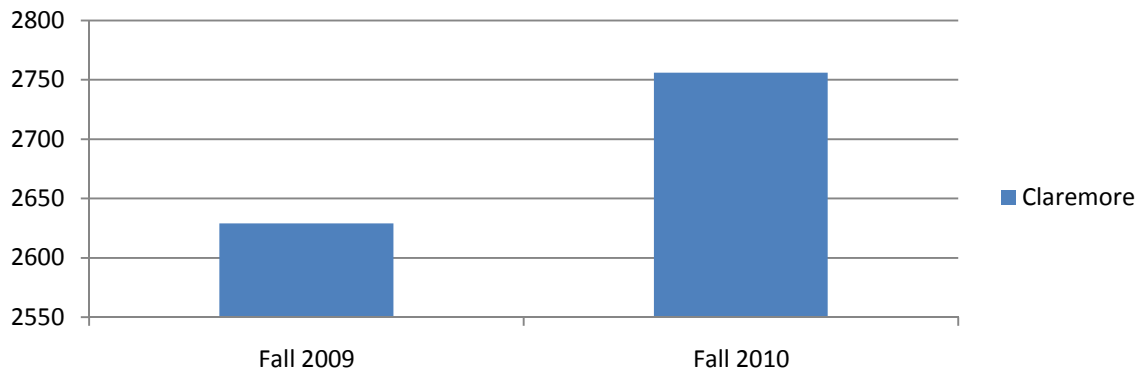
Fiscal Year	N Purchased	Expenditures
2006	3,496	\$299,033
2007	2,702	\$283,941
2008	3,106	\$253,600
2009	2,801	\$299,008
2010	2,568	\$285,200

Claremore Campus

Please note: These data use the duplicated student head count. This means students enrolled at more than one campus will be counted in each campus' count.

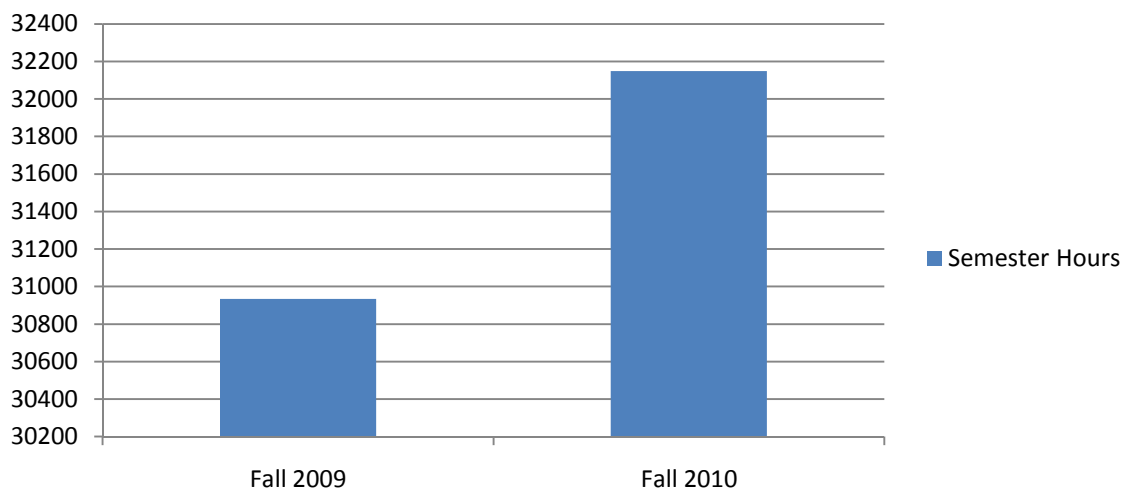
Claremore Duplicated Head Count and FTE

Claremore



	Fall 2009	Fall 2010
Claremore	2629	2756
FTE	2062.27	2143.20

Claremore Total Semester Hours



	Fall 2009	Fall 2010
Semester Hours	30934	32148

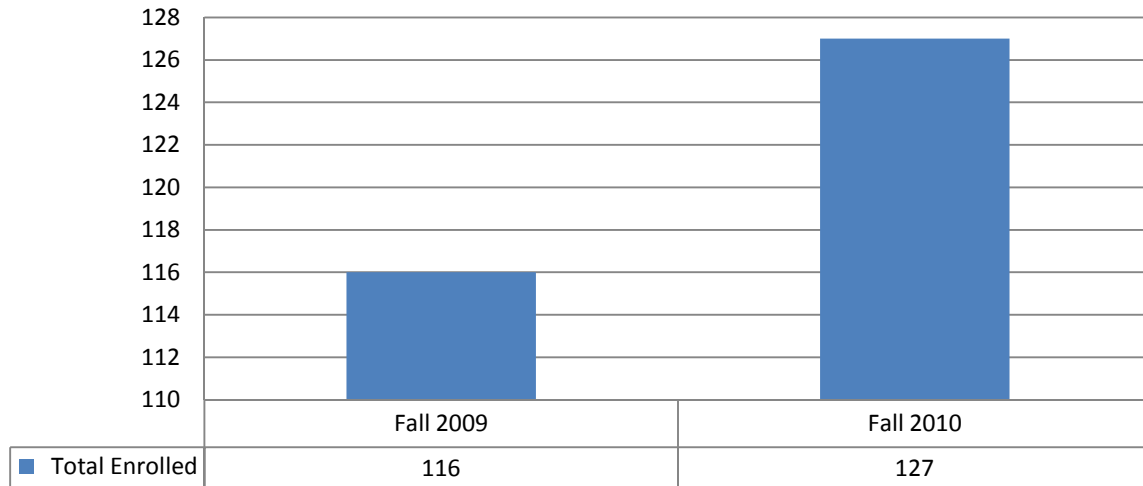
Claremore Head Count by Gender and Level

Please note these counts do not include concurrent high school students.

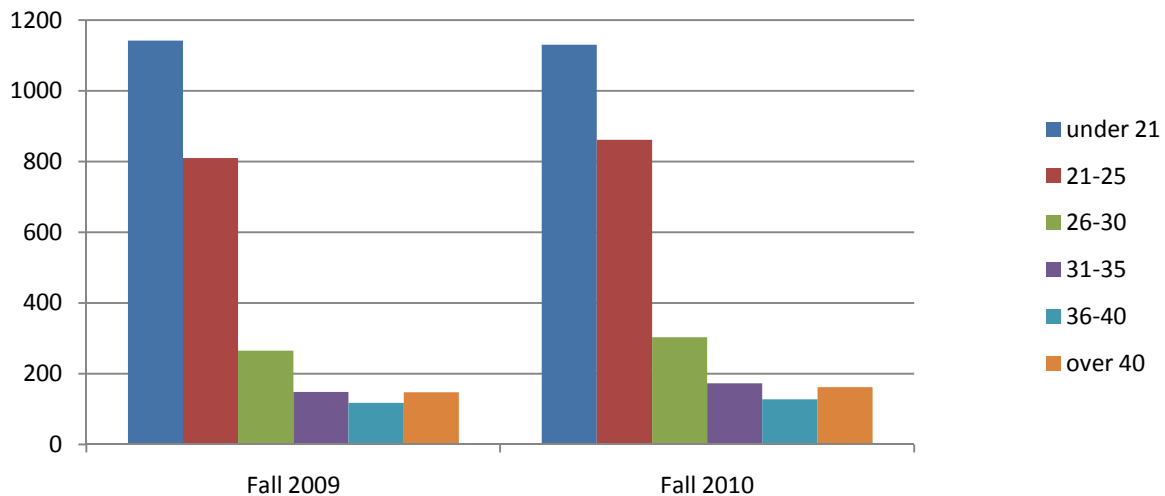
Two-Week Report Counts

	Fall 2009		Fall 2010	
	Male	Female	Male	Female
Freshmen (FT)	373	494	340	531
Freshmen (PT)	62	103	71	103
First-time Freshmen (FT)	224	310	180	274
First-time Freshmen (PT)	19	28	29	29
Sophomores (FT)	171	226	167	237
Sophomores (PT)	31	102	36	90
Juniors (FT)	135	193	138	192
Juniors (PT)	24	84	36	99
Seniors (FT)	175	139	144	200
Seniors (PT)	57	127	63	166
Special Non-Degree Seeking (FT)	0	0	0	0
Special Non-Degree Seeking (PT)	11	6	7	9
Total Full-time	854	1052	789	1160
Total Part-time	185	422	213	467

Claremore Concurrent High School Student Head Count

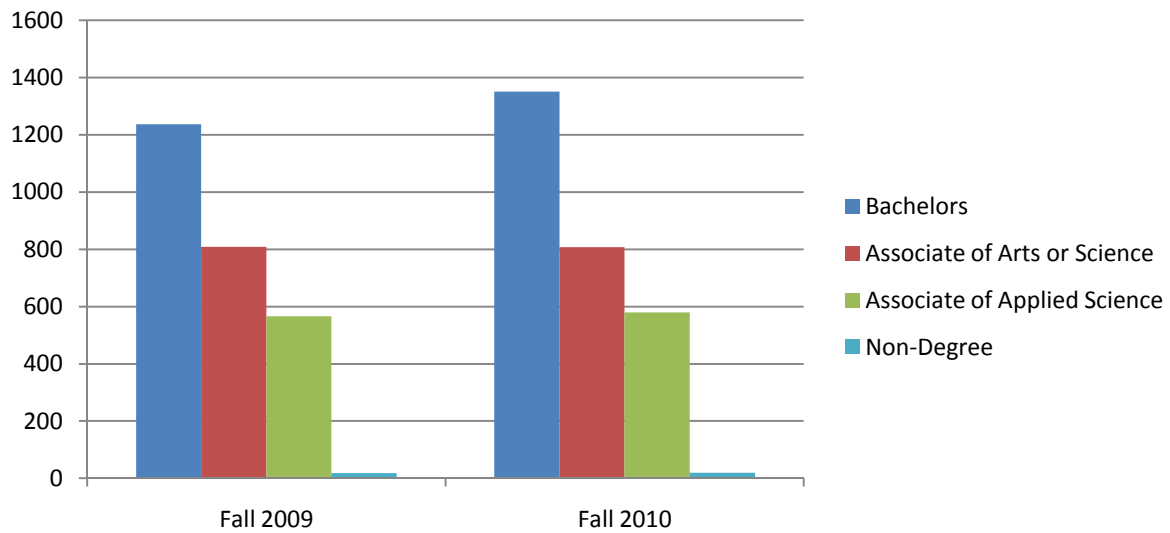


Claremore Head Count By Age



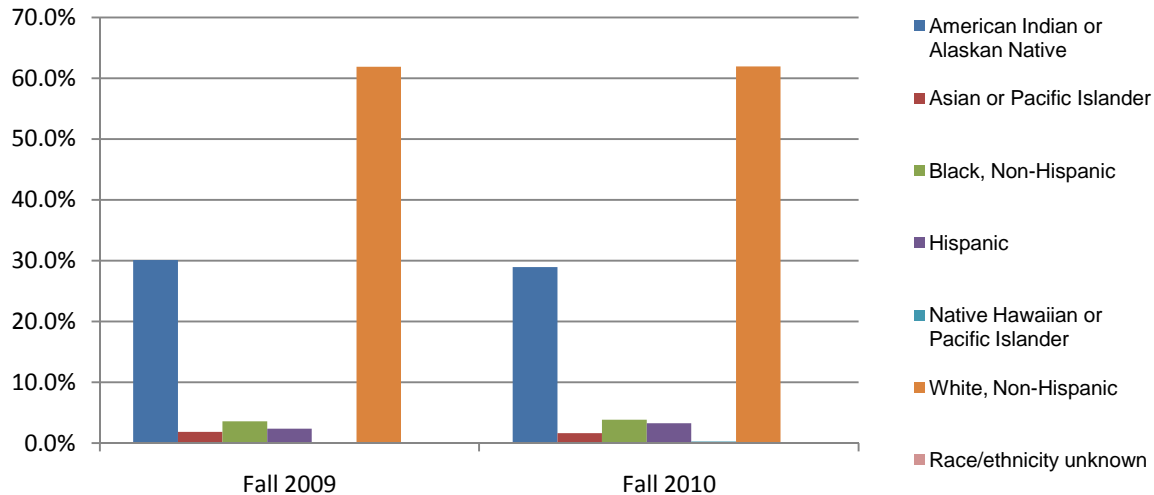
	Fall 2009	Fall 2010
under 21	1142	1130
21-25	810	861
26-30	265	303
31-35	148	173
36-40	117	127
over 40	147	162
Average Age	24	24

Claremore Head Count by Goal



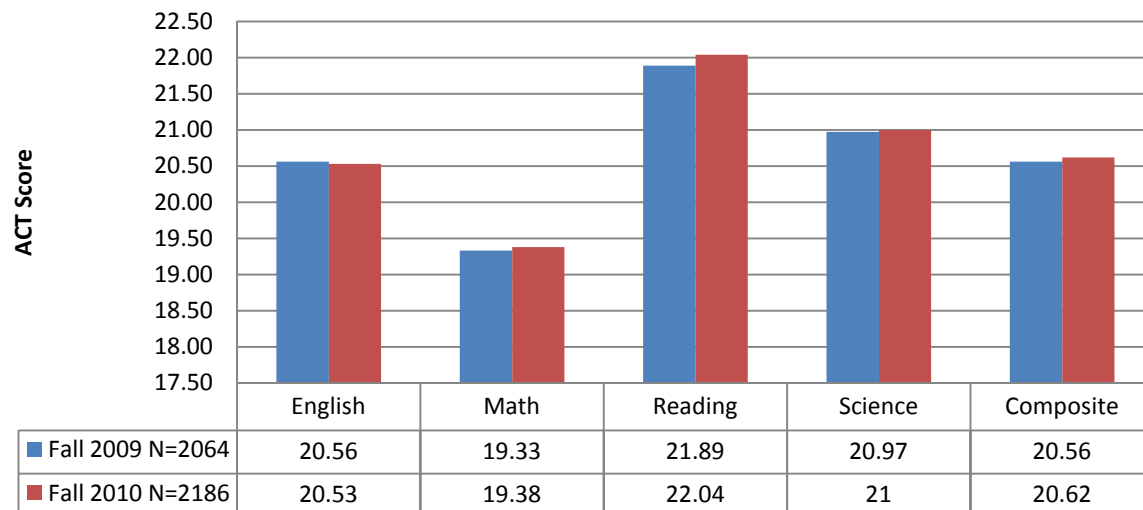
	Fall 2009	Fall 2010
Bachelors	1236	1351
Associate of Arts or Science	809	807
Associate of Applied Science	566	579
Non-Degree	18	19

Claremore Head Count by Race/Ethnicity

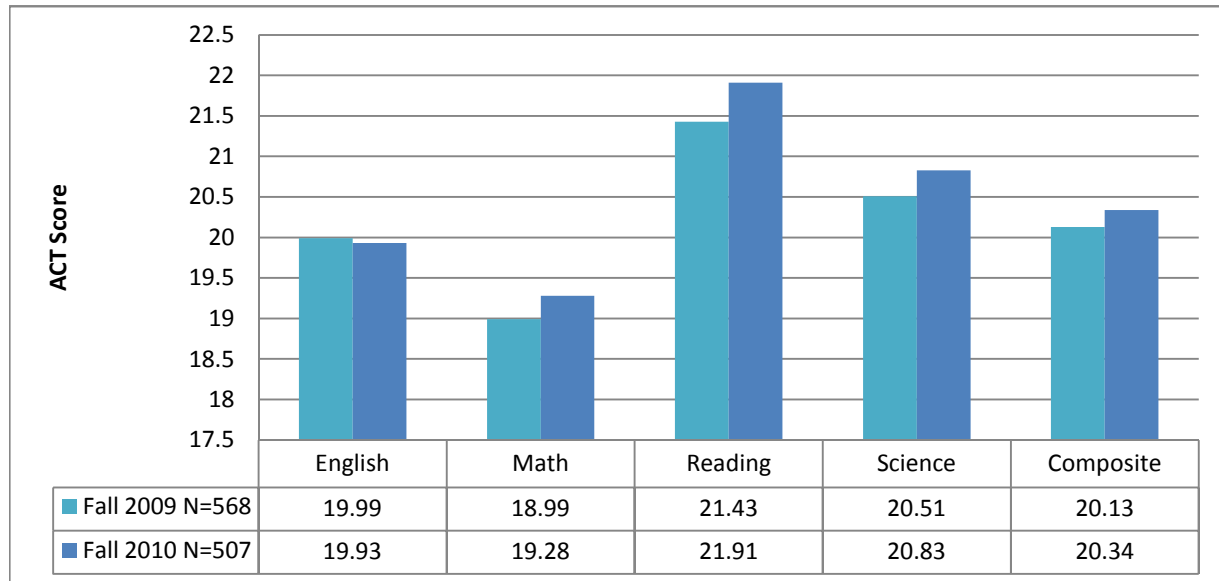


	Fall 2009	Fall 2010
American Indian or Alaskan Native	30.1%	29.0%
Asian or Pacific Islander	1.9%	1.7%
Black, Non-Hispanic	3.6%	3.8%
Hispanic	2.4%	3.3%
Native Hawaiian or Pacific Islander	0.2%	0.3%
White, Non-Hispanic	61.9%	61.9%
Race/ethnicity unknown	0.0%	0.0%

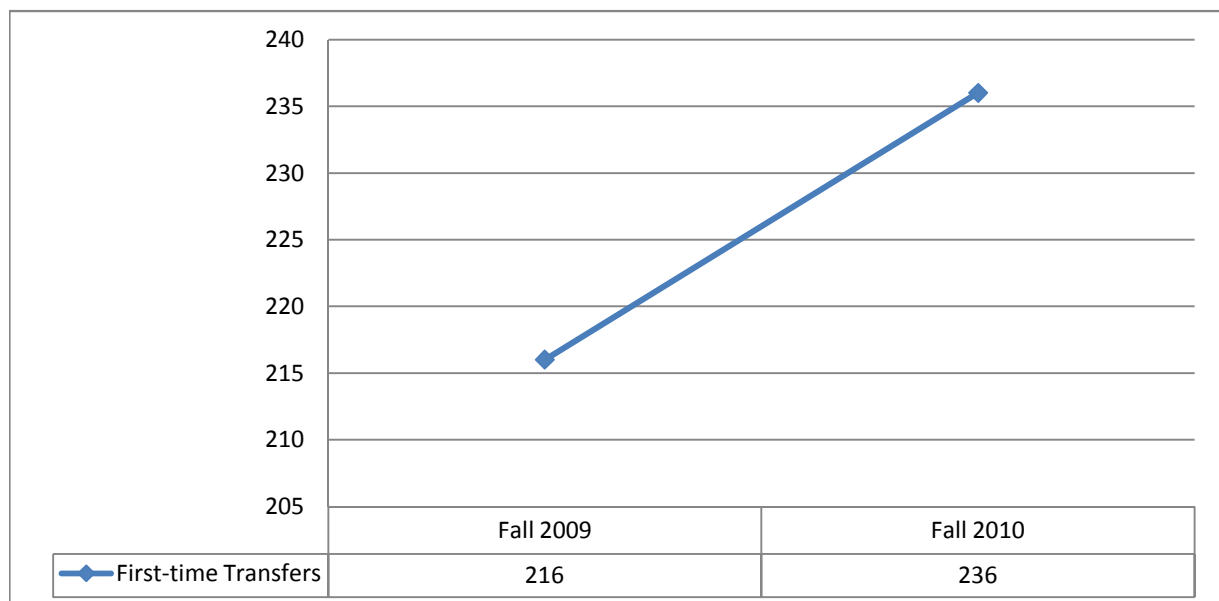
Average ACT for Claremore Students Who Submitted Scores



Claremore First-time Freshmen Average ACT Scores



Claremore First-time Transfers Head Count



Claremore Head Count by Major

Bachelor				
Degree	Code	Major/Option	Fall 2009	Fall 2010
BA	114	Communications--BA	14	15
BA	114A	Communications-Communication Arts Option	7	15
BA	114C	Communications-Corporate Communications Option	19	21
BA	114X	Communications-Radio-Television Option	47	43
BA	109	Liberal Arts--BA	23	14
BA	109E	Liberal Arts--English Option	20	27
BA	109H	Liberal Arts--Global Humanities Option	10	10
BA	123	Public Administration--BA	3	7
BA	123A	Public Administration--Accounting and Budgeting Option*	0	1
BA	123M	Public Administration--General Management Option*	0	2
BA	123H	Public Administration--Human Resources Management Option*	0	0
BA	123P	Public Administration--Public Affairs Option*	0	0
BA	123R	Public Administration--Research and Analysis Option*	0	0
BFA	119	Visual Arts--BFA	12	11
BFA	119G	Visual Arts--Graphic Design Option	40	48
BFA	119M	Visual Arts--Multimedia Option	14	21
BFA	119P	Visual Arts--Photographic Arts Option*	0	2
BFA	119A	Visual Arts--Studio Arts Option	31	45
BS	112	Biology--BS	13	3
BS	112E	Biology--Environmental Conservation Option	49	51
BS	112M	Biology--Medical/Molecular Option	208	223
BS	113	Business Administration--BS	25	10
BS	113A	Business Administration--Accounting Option	83	83
BS	113E	Business Administration--Entrepreneurship Option	11	14
BS	113F	Business Administration--Forensic Accounting Option	6	7
BS	113H	Business Administration--Human Resources Option	19	22
BS	113M	Business Administration--Management Option	94	95
BS	1113G	Business Administration--Manufacturing Management Option	1	3
BS	113K	Business Administration--Marketing Option	56	56
BS	108	Business Information Technology--BS	5	1
BS	108N	Business Information Technology--Computer Network	24	21
BS	108S	Business Information Technology--Software Development	10	16
BS	108T	Business Information Technology--Telecommunication	0	0
BS	120	Community Counseling--BS	40	42
BS	117	Game Development--BS	29	31
BS	115	Justice Administration--BS	51	43
BS	118	Nursing--BS	18	16
BS	118U	Nursing (not admitted to the program)	25	42
BS	775	Organizational Leadership--BS	2	2
BS	775B	Organizational Leadership--Business Focus	0	4
BS	775C	Organizational Leadership--Communications Focus	1	0
BS	110	Social Science--BS	1	0

BS	110H	Social Science--History & Political Science Option‡	3	0
BS	110P	Social Science--Psychology & Sociology Option‡	17	3
BS	110T	Social Science--History Option	15	23
BS	110L	Social Science--Political Science Option	12	12
BS	110Y	Social Science--Psychology Option	74	106
BS	110S	Social Science--Sociology Option	12	19
BS	122	Sport Management--BS	76	91
BT	107	Applied Technology--BT	15	24
Bachelor Degree Total			1235	1345

Associate of Arts

Degree	Code	Major	Fall 2009	Fall 2010
AA	043	Accounting	14	22
AA	001	Art-General Option‡	3	1
AA	001D	Art-Graphic Design Option‡	1	0
AA	001G	Art-Graphics Option‡	1	0
AA	001H	Art-Art History Option‡	0	0
AA	004	Business Administration	46	62
AA	121	Criminal Justice Studies	8	2
AA	121C	Criminal Justice Studies - COP Option	32	30
AA	121L	Criminal Justice Studied - Law/Justice Option	14	26
AA	011	Education - Elementary/Early Childhood Option‡	8	1
AA	011E	Elementary Education	97	83
AA	096	Law/Justice Careers‡	0	1
AA	116	Legal Assisting‡	3	0
AA	023	Liberal Arts	9	26
AA	023E	Liberal Arts--English Option	6	5
AA	023N	Liberal Arts--Native American Studies Option	1	3
AA	012	Secondary Education	40	44
AA	019	Social Science	5	1
AA	019H	Social Sciences--History Option	2	2
AA	019G	Social Sciences--Political Science Option	3	2
AA	019P	Social Sciences--Psychology Option	21	33
AA	019S	Social Sciences--Sociology Option	5	5
Associate of Arts Total			319	349

Associate of Science

Degree	Code	Major	Fall 2009	Fall 2010
AS	003	Biological Sciences	23	23
AS	003B	Biological Sciences-Biology Option‡	0	0
AS	003M	Biological Sciences-Medical/Molecular Option‡	1	0
AS	097	Computer Science	14	19
AS	028	Physical Science	4	5
AS	028C	Physical Science-Chemistry Option	4	3
AS	028E	Physical Science-Engineering, Physics, Math Option	19	20
AS	028G	Physical Science-Geology Option	7	5
AS	033N	Pre-Nursing‡	1	0
Associate of Science Total			73	75

Associate of Applied Science

Degree	Code	Major	Fall 2009	Fall 2010
AAS	111	Applied Technology-AAS	23	12
AAS	111B	Applied Technology--Business, Information, & Engineer	2	13
AAS	111C	Applied Technology-Construction Option	0	2
AAS	111M	Applied Technology-Manufacturing Option	2	2
AAS	111P	Applied Technology-Public & Health Services Option	6	5
AAS	111A	Applied Technology-Telecommunications Option	0	0
AAS	111T	Applied Technology-Transportation Management Option	0	0
AAS	094E	Emergency Medical Services	78	79
AAS	054	Nursing	85	63
AAS	054B	Nursing-Bridge NREMT-Paramedic/LPN to RN	13	5
AAS	054U	Nursing (not admitted to program)	357	399
Associate of Applied Science Total			566	580

Misc

Degree	Code	Major	Fall 2009	Fall 2010
	777	Non-Degree Seeking	19	19
	888	Undecided	417	388
Misc Total			436	407

*Pending approval by the Oklahoma State Regents for Higher Education.

‡Deleted

Claremore Head Count by County (Oklahoma)

	Fall 2009	Fall 2010
Adair	6	9
Alfalfa	0	0
Atoka	0	0
Beaver	0	0
Beckham	0	0
Blaine	0	0
Bryan	0	0
Caddo	1	1
Canadian	1	0
Carter	1	2
Cherokee	16	13
Choctaw	1	1
Cimarron	0	0
Cleveland	9	6
Coal	0	0
Comanche	0	1
Cotton	0	0
Craig	67	55
Creek	23	37
Custer	0	2
Delaware	33	33
Dewey	0	2
Ellis	0	0
Garfield	2	2
Garvin	0	0
Grady	1	1
Grant	0	0
Greer	0	0
Harmon	0	0
Harper	0	0
Haskell	0	0
Hughes	0	0
Jackson	2	1
Jefferson	0	0
Johnston	0	0
Kay	5	5
Kingfisher	4	0
Kiowa	0	0
Latimer	2	2
LeFlore	2	1
Lincoln	5	4
Logan	2	1
Love	0	0
McClain	0	0

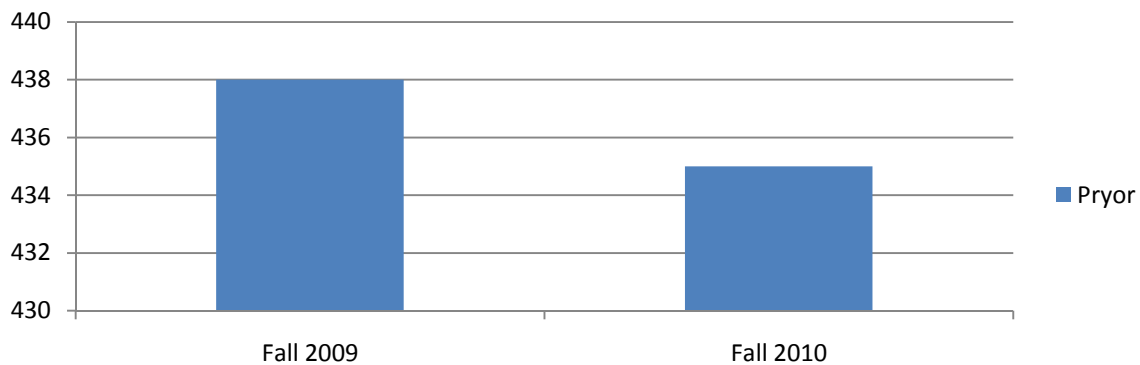
McCurtain	5	7
McIntosh	4	2
Major	0	0
Marshall	0	0
Mayes	252	259
Murray	0	0
Muskogee	9	16
Noble	0	0
Nowata	55	48
Okfuskee	0	0
Oklahoma	15	22
Okmulgee	17	15
Osage	39	43
Ottawa	9	13
Pawnee	4	3
Payne	3	2
Pittsburg	1	1
Pontotoc	0	0
Pottawatomie	5	1
Pushmataha	0	1
Roger Mills	0	0
Rogers	1219	1277
Seminole	2	3
Sequoyah	2	2
Stephens	1	0
Texas	0	0
Tillman	0	0
Tulsa	506	547
Wagoner	55	53
Washington	107	108
Washita	0	0
Woods	0	0
Woodward	0	0
Unknown	0	9
Total	2493	2611

Pryor Campus

Please note: These data use the duplicated student head count. This means students enrolled at more than one campus will be counted in each campus' count.

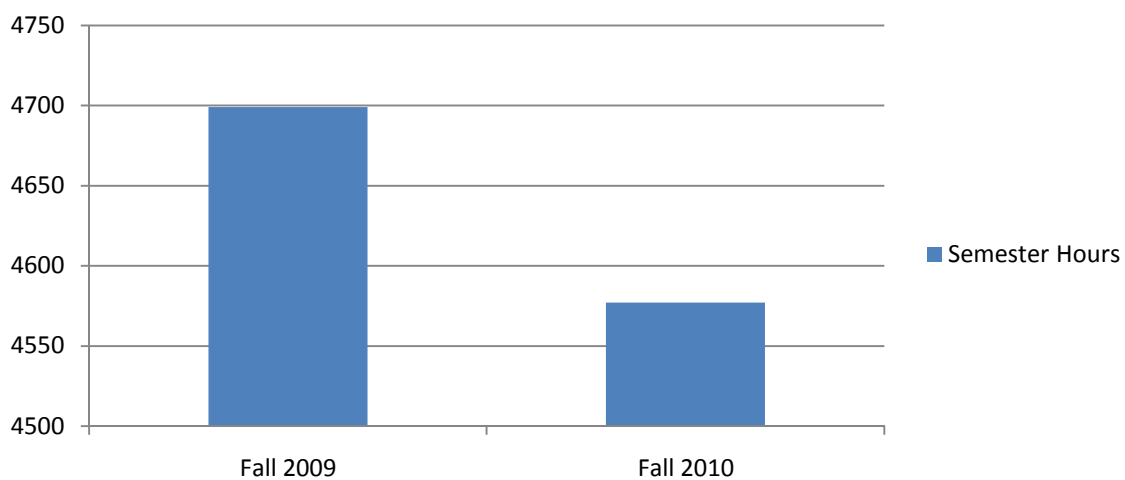
Pryor Duplicated Head Count and FTE

Pryor



	Fall 2009	Fall 2010
Pryor	438	435
FTE	313.27	305.13

Pryor Total Semester Hours



	Fall 2009	Fall 2010
Semester Hours	4699	4577

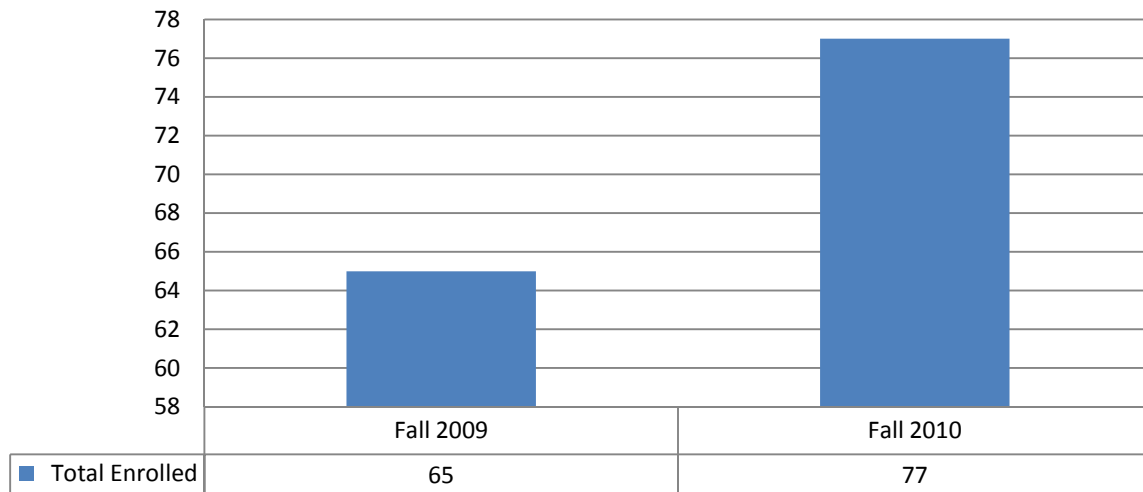
Pryor Head Count by Gender and Level

Please note these counts do not include concurrent high school students.

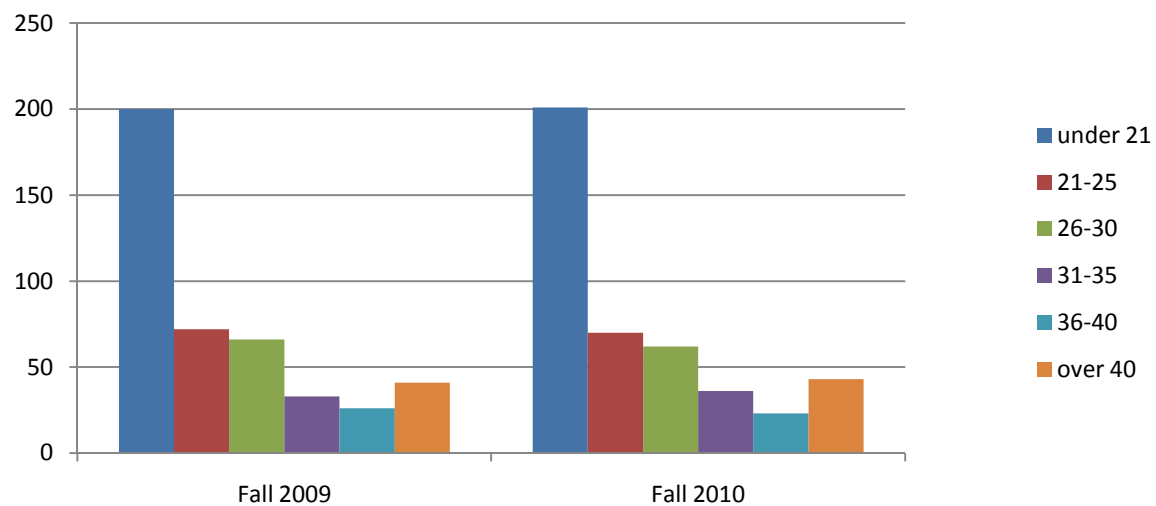
Two-Week Report Counts

	Fall 2009		Fall 2010	
	Male	Female	Male	Female
Freshmen (FT)	55	138	57	97
Freshmen (PT)	16	34	11	36
First-time Freshmen (FT)	24	62	28	45
First-time Freshmen (PT)	7	16	6	17
Sophomores (FT)	9	40	13	54
Sophomores (PT)	8	21	8	14
Juniors (FT)	6	18	5	22
Juniors (PT)	3	9	4	12
Seniors (FT)	4	6	4	9
Seniors (PT)	2	4	4	7
Special Non-Degree Seeking (FT)	0	0	0	0
Special Non-Degree Seeking (PT)	0	0	1	0
Total Full-time	74	202	79	182
Total Part-time	29	68	28	69

Pryor Concurrent High School Student Head Count

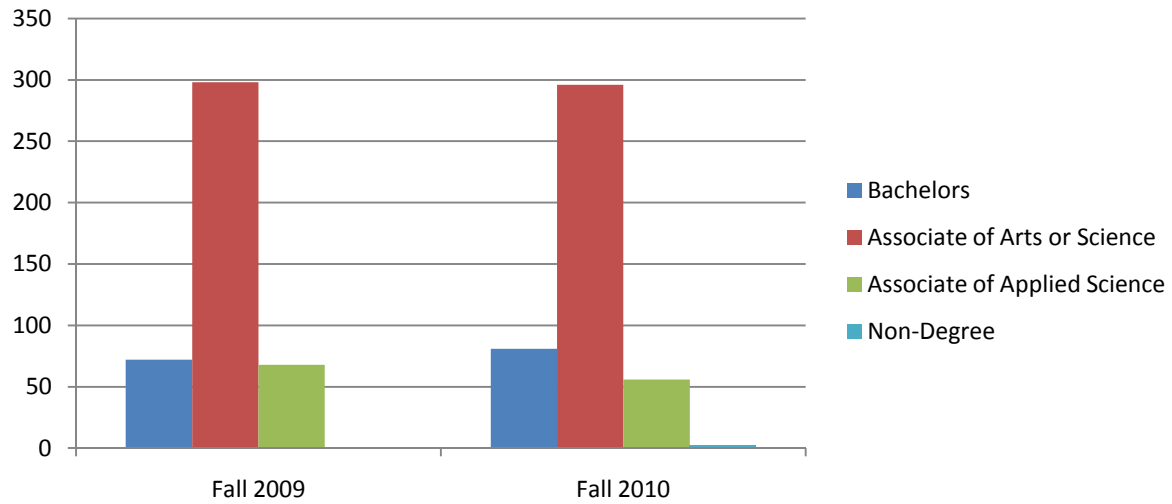


Pryor Head Count By Age



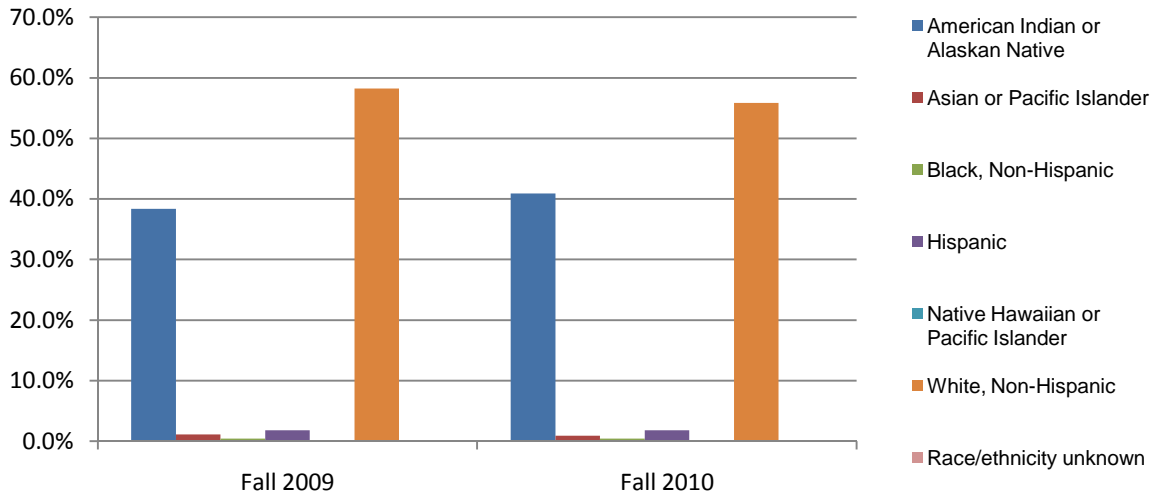
	Fall 2009	Fall 2010
under 21	200	201
21-25	72	70
26-30	66	62
31-35	33	36
36-40	26	23
over 40	41	43
Average Age	26	25

Pryor Head Count by Goals



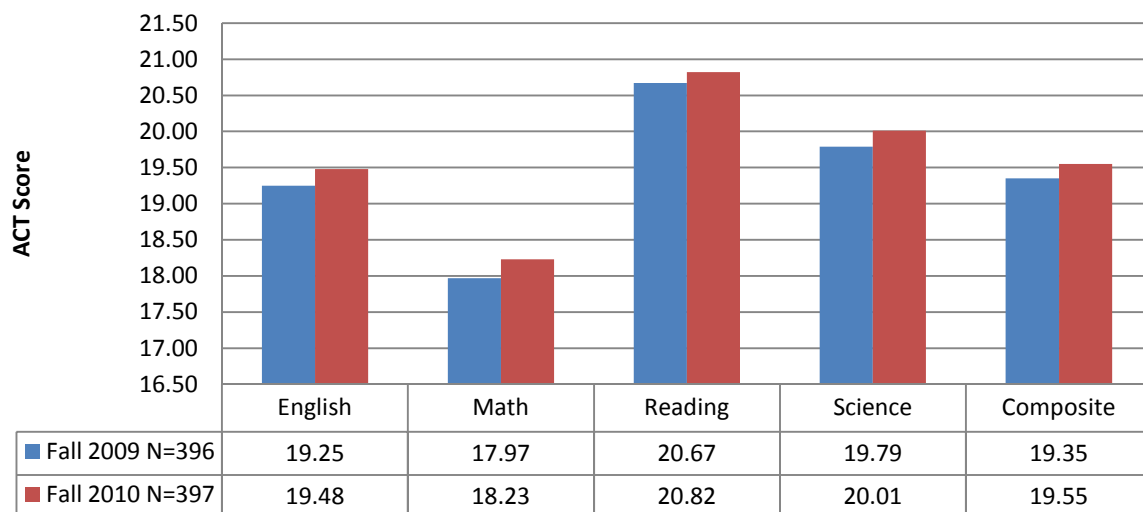
	Fall 2009	Fall 2010
Bachelors	72	81
Associate of Arts or Science	298	296
Associate of Applied Science	68	56
Non-Degree	0	2

Pryor Head Count by Race/Ethnicity

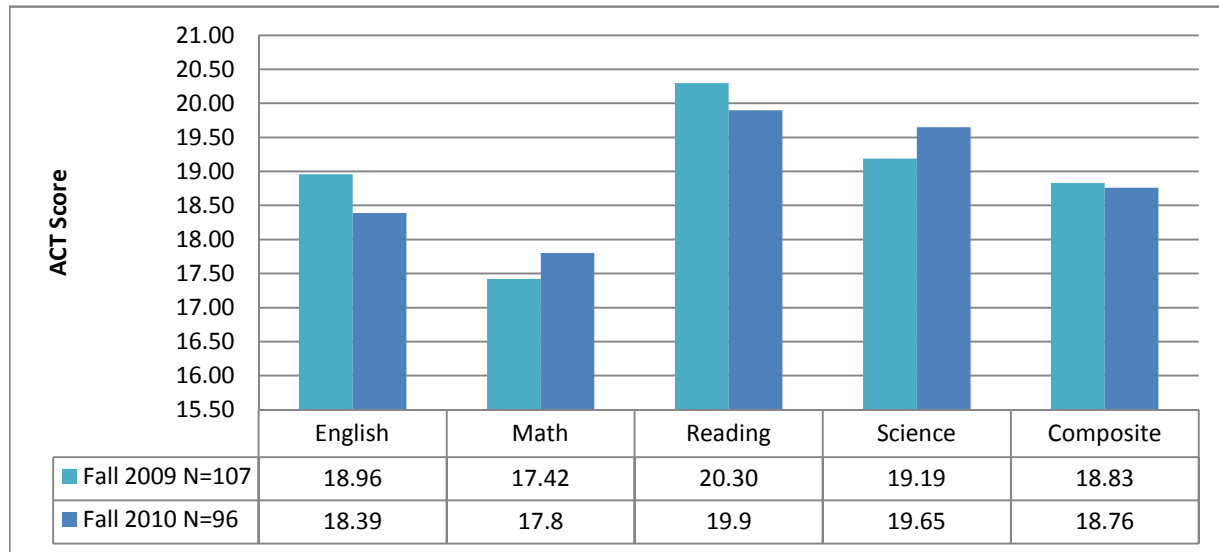


	Fall 2009	Fall 2010
American Indian or Alaskan Native	38.4%	40.9%
Asian or Pacific Islander	1.1%	0.9%
Black, Non-Hispanic	0.5%	0.5%
Hispanic	1.8%	1.8%
Native Hawaiian or Pacific Islander	0.0%	0.0%
White, Non-Hispanic	58.2%	55.9%
Race/ethnicity unknown	0.0%	0.0%

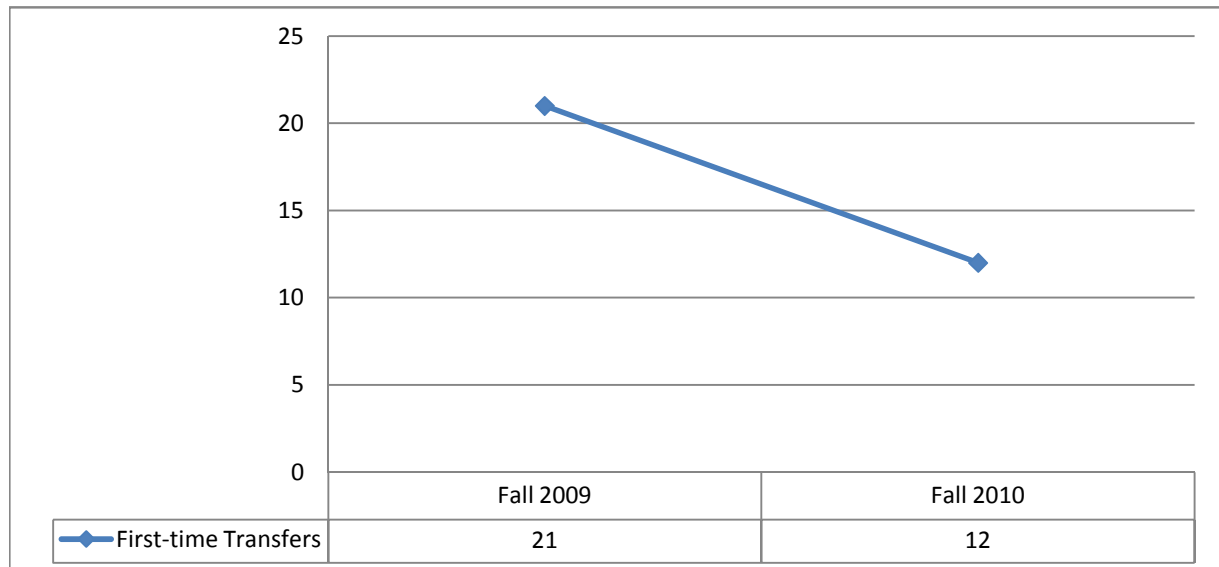
Average ACT for Pryor Students Who Submitted Scores



Pryor First-time Freshmen Average ACT Scores



Pryor First-Time Transfers Head Count



Pryor Head Count by Major

Bachelor				
Degrees	Code	Major/Option	Fall 2009	Fall 2010
BA	114	Communications--BA	0	0
BA	114A	Communications-Communication Arts Option	0	0
BA	114C	Communications-Corporate Communications Option	2	1
BA	114X	Communications-Radio-Television Option	1	0
BA	109	Liberal Arts--BA	0	0
BA	109E	Liberal Arts--English Option	1	1
BA	109H	Liberal Arts--Global Humanities Option	0	0
BA	123	Public Administration--BA	0	0
BA	123A	Public Administration--Accounting and Budgeting Option*	0	0
BA	123M	Public Administration--General Management Option*	0	0
BA	123H	Public Administration--Human Resources Management Option*	0	0
BA	123P	Public Administration--Public Affairs Option*	0	0
BA	123R	Public Administration--Research and Analysis Option*	0	0
BFA	119	Visual Arts--BFA	1	1
BFA	119G	Visual Arts--Graphic Design Option	1	2
BFA	119M	Visual Arts--Multimedia Option	2	0
BFA	119P	Visual Arts--Photographic Arts Option*	0	0
BFA	119A	Visual Arts--Studio Arts Option	0	1
BS	112	Biology--BS	0	0
BS	112E	Biology--Environmental Conservation Option	0	3
BS	112M	Biology--Medical/Molecular Option	9	11
BS	113	Business Administration--BS	3	1
BS	113A	Business Administration--Accounting Option	14	12
BS	113E	Business Administration--Entrepreneurship Option	1	0
BS	113F	Business Administration--Forensic Accounting Option	2	2
BS	113H	Business Administration--Human Resources Option	1	3
BS	113M	Business Administration--Management Option	4	7
BS	1113G	Business Administration--Manufacturing Management Option	1	2
BS	113K	Business Administration--Marketing Option	2	1
BS	108	Business Information Technology--BS	0	0
BS	108N	Business Information Technology--Computer Network Administration Option	0	3
BS	108S	Business Information Technology--Software Development & Multimedia Option	2	3
BS	108T	Business Information Technology--Telecommunications Foundations Option	0	0
BS	120	Community Counseling--BS	5	2
BS	117	Game Development--BS	0	0
BS	115	Justice Administration--BS	2	6
BS	118	Nursing--BS	0	3
BS	118U	Nursing (not admitted to the program)	2	3
BS	775	Organizational Leadership--BS	0	1
BS	775B	Organizational Leadership--Business Focus	0	1
BS	775C	Organizational Leadership--Communications Focus	0	0
BS	110	Social Science--BS	0	0

BS	110H	Social Science--History & Political Science Option‡	0	0
BS	110P	Social Science--Psychology & Sociology Option‡	1	0
BS	110T	Social Science--History Option	1	1
BS	110L	Social Science--Political Science Option	0	0
BS	110Y	Social Science--Psychology Option	9	6
BS	110S	Social Science--Sociology Option	0	2
BS	122	Sport Management--BS	2	0
BT	107	Applied Technology--BT	3	2
Bachelor Degree Total			72	81

Associate of Arts

Degrees	Code	Major/Option	Fall 2009	Fall 2010
AA	043	Accounting	22	16
AA	001	Art-General Option‡	0	0
AA	001D	Art-Graphic Design Option‡	1	0
AA	001G	Art-Graphics Option‡	0	0
AA	001H	Art-Art History Option‡	0	0
AA	004	Business Administration	45	42
AA	121	Criminal Justice Studies	2	1
AA	121C	Criminal Justice Studies - COP Option	4	3
AA	121L	Criminal Justice Studied - Law/Justice Option	2	5
AA	011	Education - Elementary/Early Childhood Option‡	7	1
AA	011E	Elementary Education	27	27
AA	116	Legal Assisting‡	0	0
AA	023	Liberal Arts	3	6
AA	023E	Liberal Arts--English Option	1	3
AA	023N	Liberal Arts--Native American Studies Option	0	0
AA	012	Secondary Education	26	12
AA	019	Social Science	1	1
AA	019H	Social Sciences--History Option	1	0
AA	019G	Social Sciences--Political Science Option	0	0
AA	019P	Social Sciences--Psychology Option	15	10
AA	019S	Social Sciences--Sociology Option	1	2
Associate of Arts Total			158	129

Associate of Science

Degrees	Code	Major/Option	Fall 2009	Fall 2010
AS	003	Biological Sciences	9	8
AS	097	Computer Science	8	10
AS	028	Physical Science	0	1
AS	028C	Physical Science-Chemistry Option	1	2
AS	028E	Physical Science-Engineering, Physics, Math Option	4	1
AS	028G	Physical Science-Geology Option	0	0
AS	033N	Pre-Nursing‡	0	0
Associate of Science Total			22	22

Associate of Applied Science

Degrees	Code	Major/Option	Fall 2009	Fall 2010
AAS	111	Applied Technology-AAS	3	4
		Applied Technology--Business, Information, & Engineering		
AAS	111B	Option	1	1
AAS	111C	Applied Technology-Construction Option	0	1
AAS	111M	Applied Technology-Manufacturing Option	0	
AAS	111P	Applied Technology-Public & Health Services Option	1	1
AAS	111A	Applied Technology-Telecommunications Option	0	0
AAS	111T	Applied Technology-Transportation Management Option	0	0
AAS	094E	Emergency Medical Services	1	4
AAS	054	Nursing	2	2
AAS	054B	Nursing-Bridge NREMT-Paramedic/LPN to RN	1	0
AAS	054U	Nursing (not admitted to program)	59	43
		Associate of Applied Science Total	68	56

Misc

Degrees	Code	Major/Option	Fall 2009	Fall 2010
	777	Non-Degree Seeking	0	2
	888	Undecided	118	145
		Misc Total	118	147

*Pending approval by the Oklahoma State Regents for Higher Education.

‡Deleted

Pryor Head Count by County (Oklahoma)

	Fall 2009	Fall 2010
Adair	2	3
Alfalfa	0	0
Atoka	0	0
Beaver	0	0
Beckham	0	0
Blaine	0	0
Bryan	0	0
Caddo	0	0
Canadian	0	0
Carter	0	0
Cherokee	3	9
Choctaw	0	0
Cimarron	0	0
Cleveland	0	0
Coal	0	0
Comanche	0	0
Cotton	0	1
Craig	16	9
Creek	2	0
Custer	0	0
Delaware	9	8
Dewey	0	0
Ellis	0	0
Garfield	0	0
Garvin	0	0
Grady	0	0
Grant	0	0
Greer	0	0
Harmon	0	0
Harper	0	0
Haskell	0	0
Hughes	0	0
Jackson	0	0
Jefferson	0	0
Johnston	0	0
Kay	0	0
Kingfisher	0	0
Kiowa	0	0
Latimer	0	0
LeFlore	0	0
Lincoln	0	0
Logan	0	0
Love	0	0
McClain	0	0

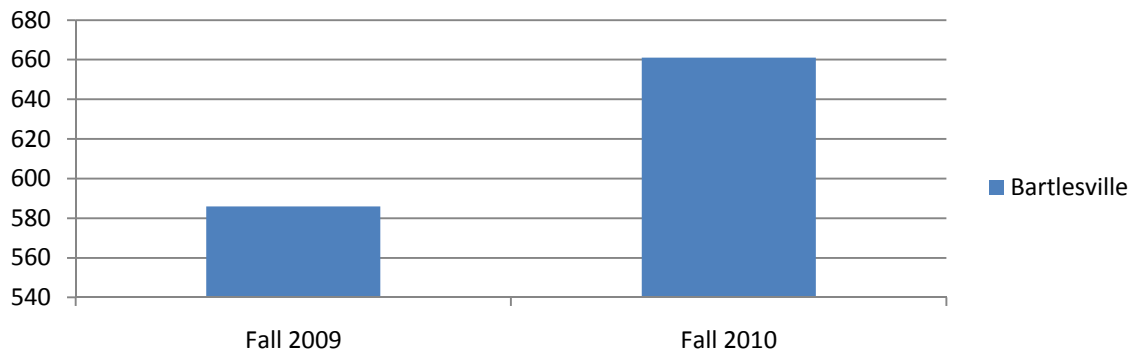
McCurtain	0	0
McIntosh	0	0
Major	0	0
Marshall	0	0
Mayes	369	359
Murray	0	0
Muskogee	0	1
Noble	0	0
Nowata	0	1
Okfuskee	0	0
Oklahoma	0	0
Okmulgee	0	0
Osage	0	0
Ottawa	1	4
Pawnee	0	0
Payne	0	0
Pittsburg	0	0
Pontotoc	0	0
Pottawatomie	0	0
Pushmataha	0	0
Roger Mills	0	0
Rogers	19	23
Seminole	0	0
Sequoyah	0	0
Stephens	0	0
Texas	0	0
Tillman	0	0
Tulsa	7	5
Wagoner	6	7
Washington	2	2
Washita	0	0
Woods	0	0
Woodward	0	0
Unknown	0	0
Total	436	432

Bartlesville Campus

Please note: These data use the duplicated student head count. This means students enrolled at more than one campus will be counted in each campus' count.

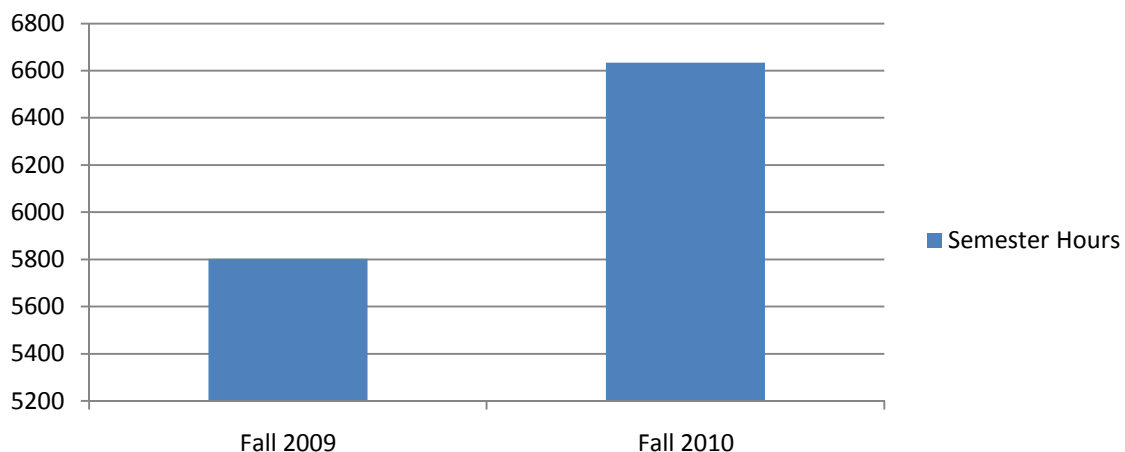
Bartlesville Duplicated Head Count and FTE

Bartlesville



	Fall 2009	Fall 2010
Bartlesville	586	661
FTE	386.87	442.27

Bartlesville Total Semester Hours



	Fall 2009	Fall 2010
Semester Hours	5803	6634

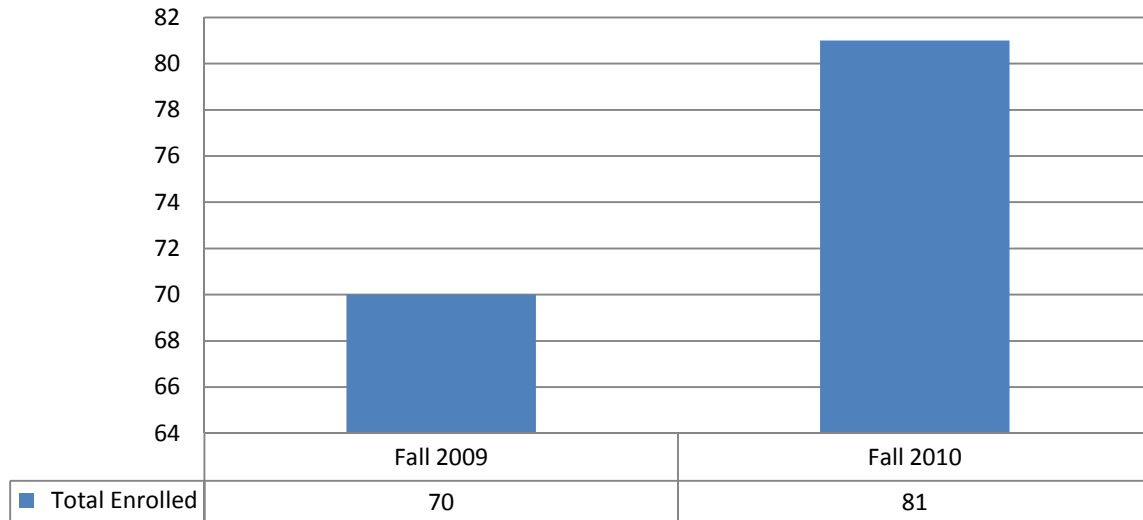
Bartlesville Head Count by Gender and Level

Please note these counts do not include concurrent high school students.

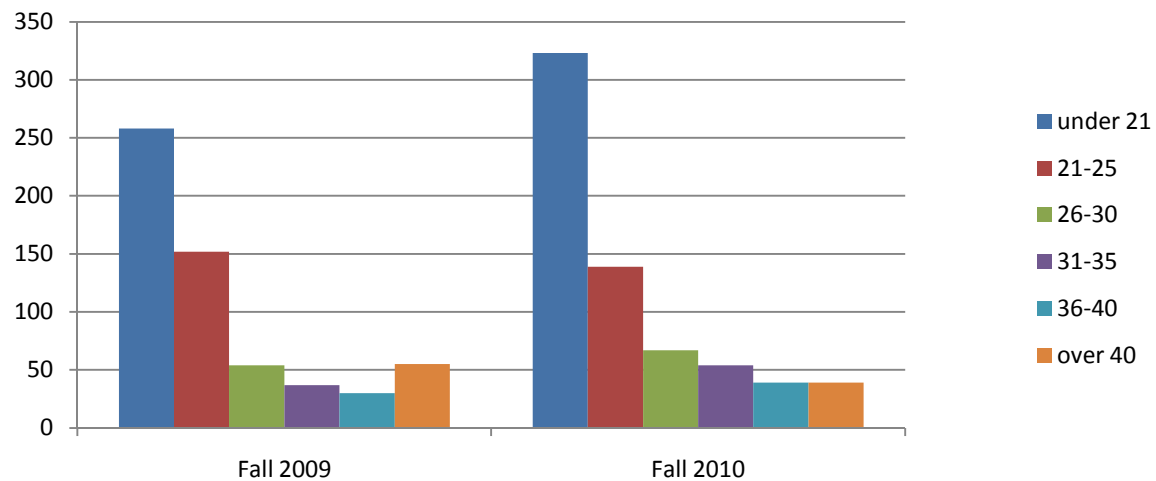
Two-Week Report Counts

	Fall 2009		Fall 2010	
	Male	Female	Male	Female
Freshmen (FT)	68	128	90	151
Freshmen (PT)	27	58	37	55
First-time Freshmen (FT)	38	68	53	74
First-time Freshmen (PT)	10	16	10	13
Sophomores (FT)	27	50	22	41
Sophomores (PT)	9	39	10	39
Juniors (FT)	8	13	11	28
Juniors (PT)	8	23	9	26
Seniors (FT)	8	16	7	15
Seniors (PT)	4	22	21	6
Special Non-Degree Seeking (FT)	0	0	0	0
Special Non-Degree Seeking (PT)	3	5	7	5
Total Full-time	111	207	130	235
Total Part-time	51	147	84	131

Bartlesville Concurrent High School Student Head Count

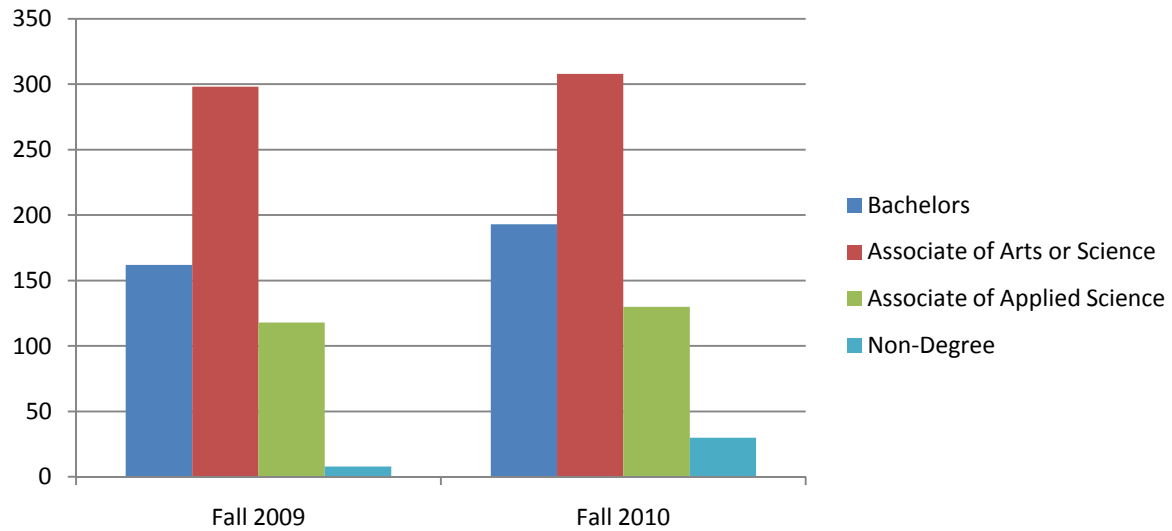


Bartlesville Head Count By Age



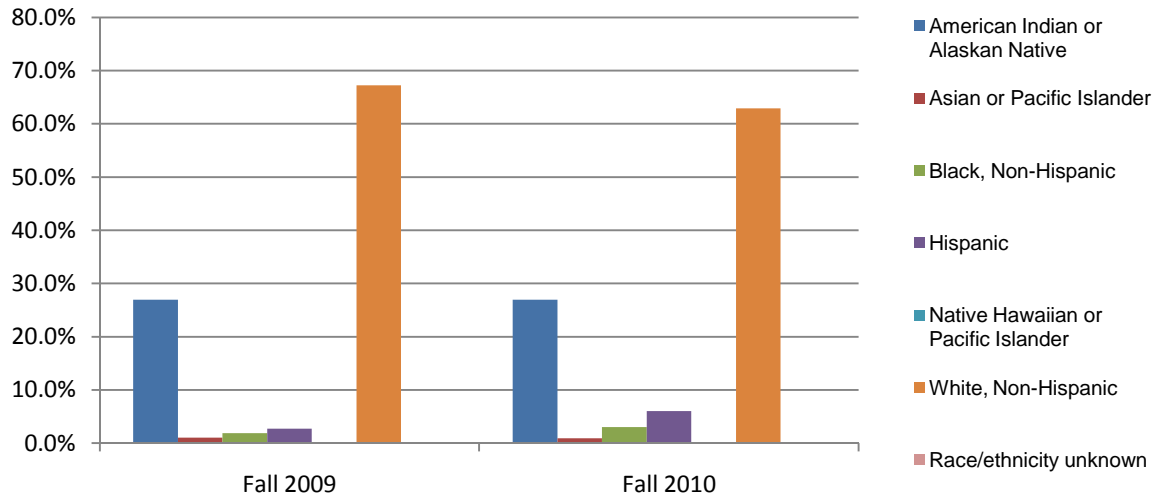
	Fall 2009	Fall 2010
under 21	258	323
21-25	152	139
26-30	54	67
31-35	37	54
36-40	30	39
over 40	55	39
Average Age	25	24

Bartlesville Head Count by Goal



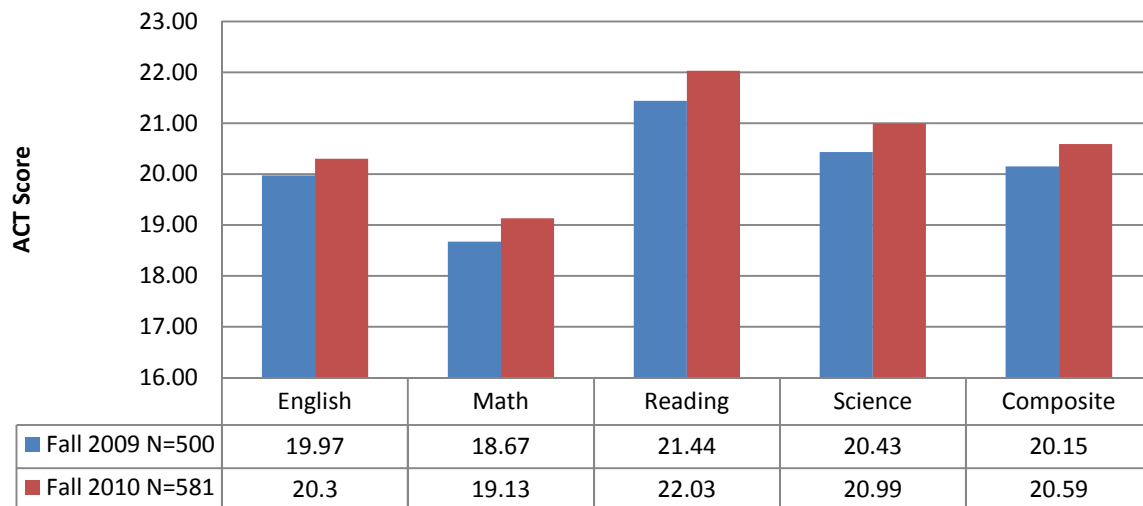
	Fall 2009	Fall 2010
Bachelors	162	193
Associate of Arts or Science	298	308
Associate of Applied Science	118	130
Non-Degree	8	30

Bartlesville Head Count by Race/Ethnicity

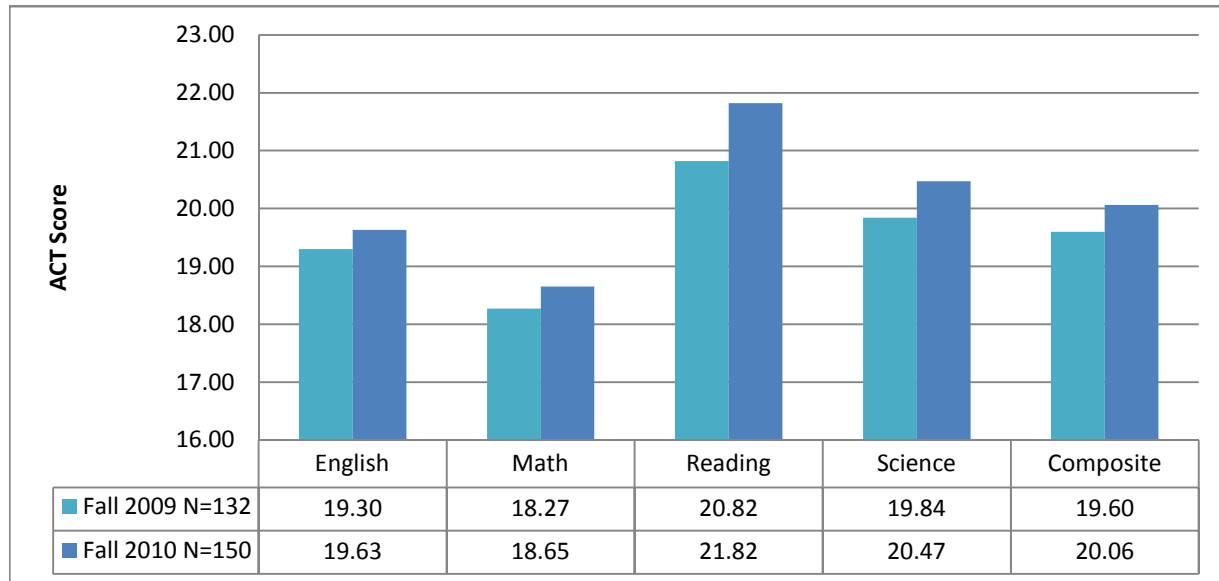


	Fall 2009	Fall 2010
American Indian or Alaskan Native	27.0%	26.9%
Asian or Pacific Islander	1.0%	0.9%
Black, Non-Hispanic	1.9%	3.0%
Hispanic	2.7%	6.1%
Native Hawaiian or Pacific Islander	0.2%	0.2%
White, Non-Hispanic	67.2%	62.9%
Race/ethnicity unknown	0.0%	0.0%

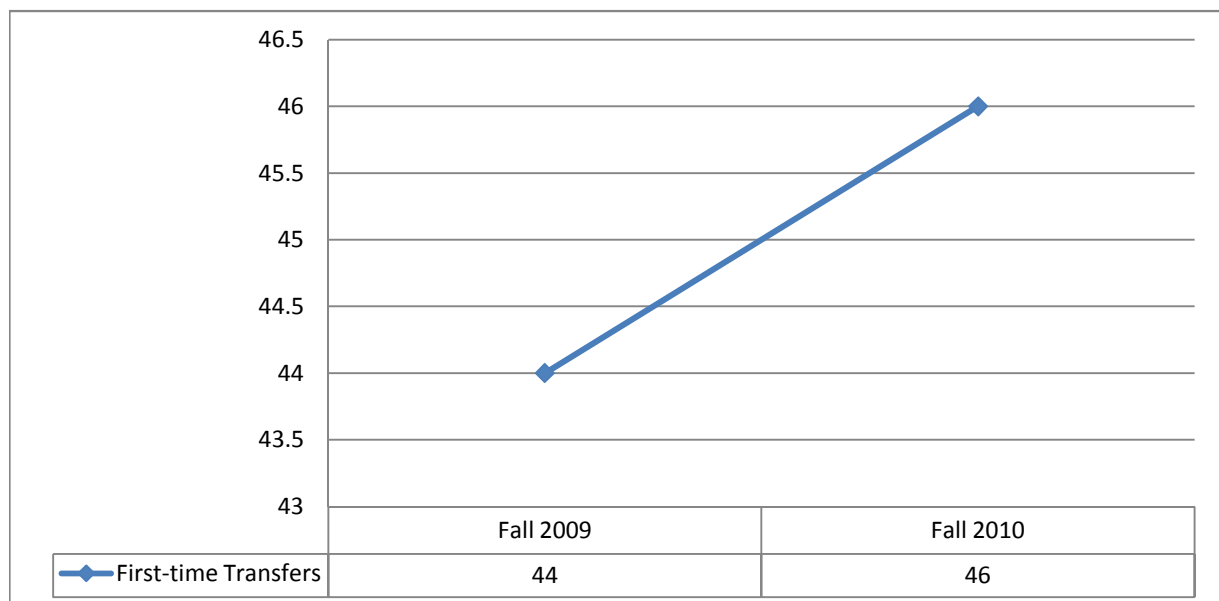
Average ACT for Bartlesville Students Who Submitted Scores



Bartlesville First-time Freshmen Average ACT Scores



Bartlesville First-time Transfers Head Count



Bartlesville Head Count by Major

Bachelor				
Degree	Code	Major/Option	Fall 2009	Fall 2010
BA	114	Communications--BA	3	1
BA	114A	Communications-Communication Arts Option	0	1
BA	114C	Communications-Corporate Communications Option	1	3
BA	114X	Communications-Radio-Television Option	1	3
BA	109	Liberal Arts--BA	3	2
BA	109E	Liberal Arts--English Option	2	3
BA	109H	Liberal Arts--Global Humanities Option	0	0
BA	123	Public Administration--BA	0	0
BA	123A	Public Administration--Accounting and Budgeting Option*	0	0
BA	123M	Public Administration--General Management Option*	0	0
BA	123H	Public Administration--Human Resources Management Option*	0	0
BA	123P	Public Administration--Public Affairs Option*	0	0
BA	123R	Public Administration--Research and Analysis Option*	0	0
BFA	119	Visual Arts--BFA	0	0
BFA	119G	Visual Arts--Graphic Design Option	2	2
BFA	119M	Visual Arts--Multimedia Option	0	1
BFA	119P	Visual Arts--Photographic Arts Option*	0	0
BFA	119A	Visual Arts--Studio Arts Option	0	4
BS	112	Biology--BS	1	0
BS	112E	Biology--Environmental Conservation Option	7	10
BS	112M	Biology--Medical/Molecular Option	12	6
BS	113	Business Administration--BS	5	4
BS	113A	Business Administration-Accounting Option	38	42
BS	113E	Business Administration-Entrepreneurship Option	1	3
BS	113F	Business Administration-Forensic Accounting Option	0	1
BS	113H	Business Administration-Human Resources Option	3	3
BS	113M	Business Administration-Management Option	28	27
BS	1113G	Business Administration-Manufacturing Management Option	0	0
BS	113K	Business Administration-Marketing Option	6	9
BS	108	Business Information Technology--BS	2	4
BS	108N	Business Information Technology--Computer Network Administration Option	6	6
BS	108S	Business Information Technology--Software Development & Multimedia Option	3	0
BS	108T	Business Information Technology--Telecommunications Foundations Option	1	0
BS	120	Community Counseling--BS	5	3
BS	117	Game Development--BS	1	4

BS	115	Justice Administration--BS	2	3
BS	118	Nursing--BS	1	1
BS	118U	Nursing (not admitted to the program)	3	9
BS	775	Organizational Leadership--BS	1	2
BS	775B	Organizational Leadership--Business Focus	1	2
BS	775C	Organizational Leadership--Communications Focus	0	0
BS	110	Social Science---BS	1	1
BS	110H	Social Science--History & Political Science Option†	0	0
BS	110P	Social Science--Psychology & Sociology Option‡	3	1
BS	110T	Social Science--History Option	0	1
BS	110L	Social Science--Political Science Option	0	2
BS	110Y	Social Science--Psychology Option	9	19
BS	110S	Social Science--Sociology Option	4	3
BS	122	Sport Management--BS	2	4
BT	107	Applied Technology--BT	4	1
Bachelor Degree Total			162	191

Associate of Arts

Degree	Code	Major/Option	Fall 2009	Fall 2010
AA	043	Accounting	18	22
AA	001	Art-General Option‡	1	1
AA	001D	Art-Graphic Design Option‡	0	0
AA	001G	Art-Graphics Option‡	0	0
AA	001H	Art-Art History Option‡	0	0
AA	004	Business Administration	29	33
AA	121	Criminal Justice Studies	0	0
AA	121C	Criminal Justice Studies - COP Option	1	5
AA	121L	Criminal Justice Studied - Law/Justice Option	3	7
AA	011	Education - Elementary/Early Childhood Option‡	0	0
AA	011E	Elementary Education	22	24
AA	116	Legal Assisting‡	2	1
AA	023	Liberal Arts	1	1
AA	023E	Liberal Arts--English Option	5	4
AA	023N	Liberal Arts--Native American Studies Option	1	1
AA	012	Secondary Education	8	6
AA	019	Social Science	2	0
AA	019H	Social Sciences--History Option	0	0
AA	019G	Social Sciences--Political Science Option	1	2
AA	019P	Social Sciences--Psychology Option	2	7
AA	019S	Social Sciences--Sociology Option	0	2
Associate of Arts Total			96	116

Associate of Science

Degree	Code	Major/Option	Fall 2009	Fall 2010
AS	003	Biological Sciences	15	14
AS	097	Computer Science	4	2
AS	028	Physical Science	1	0
AS	028C	Physical Science-Chemistry Option	1	1
AS	028E	Physical Science-Engineering, Physics, Math Option	6	9
AS	028G	Physical Science-Geology Option	1	1
AS	033N	Pre-Nursing†	0	0
		Associate of Science Total	28	27

Associate of Applied Science

Degree	Code	Major/Option	Fall 2009	Fall 2010
AAS	111	Applied Technology-AAS	9	7
AAS	111B	Applied Technology--Business, Information, & Engineering Option	0	1
AAS	111C	Applied Technology-Construction Option	0	0
AAS	111M	Applied Technology-Manufacturing Option	1	0
AAS	111P	Applied Technology-Public & Health Services Option	0	1
AAS	111A	Applied Technology-Telecommunications Option	0	0
AAS	111T	Applied Technology-Transportation Management Option	0	0
AAS	094E	Emergency Medical Services	2	2
AAS	054	Nursing	28	20
AAS	054B	Nursing-Bridge NREMT-Paramedic/LPN to RN	6	3
AAS	054U	Nursing (not admitted to program)	72	96
		Associate of Applied Science Total	118	130

Misc

Degree	Code	Major/Option	Fall 2009	Fall 2010
	777	Non-Degree Seeking	8	30
	888	Undecided	174	167
		Misc Total	182	197

*Pending approval by the Oklahoma State Regents for Higher Education

†Deleted

Bartlesville Head Count by County (Oklahoma)

	Fall 2009	Fall 2010
Adair	0	0
Alfalfa	0	0
Atoka	0	0
Beaver	0	0
Beckham	0	0
Blaine	0	0
Bryan	0	0
Caddo	0	0
Canadian	1	0
Carter	0	0
Cherokee	0	0
Choctaw	0	0
Cimarron	0	0
Cleveland	0	0
Coal	0	0
Comanche	1	0
Cotton	0	0
Craig	0	0
Creek	0	1
Custer	1	0
Delaware	1	2
Dewey	1	2
Ellis	0	0
Garfield	0	0
Garvin	0	0
Grady	0	0
Grant	0	0
Greer	0	0
Harmon	0	0
Harper	0	0
Haskell	0	0
Hughes	0	0
Jackson	1	0
Jefferson	0	0
Johnston	0	0
Kay	1	4
Kingfisher	1	1
Kiowa	1	0
Latimer	0	0
LeFlore	0	0
Lincoln	1	0
Logan	0	0
Love	0	0
McClain	0	0
McCurtain	0	0

Bartlesville Head Count by County (Oklahoma)

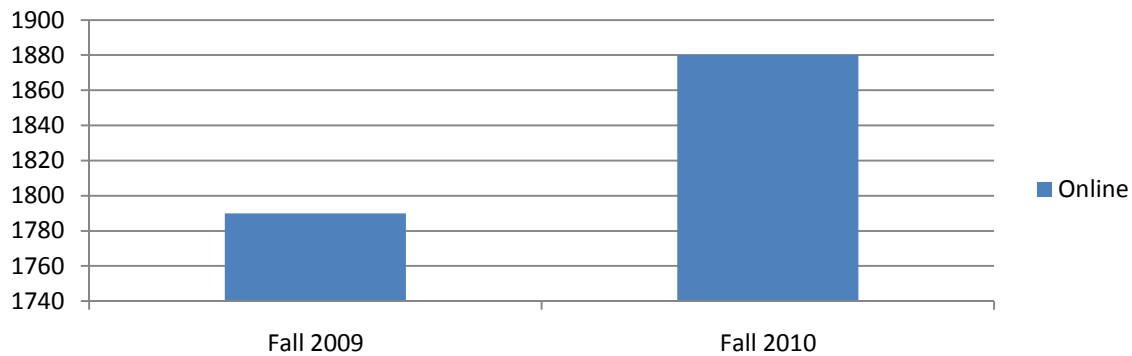
	Fall 2009	Fall 2010
McIntosh	0	0
Major	0	0
Marshall	0	0
Mayes	0	0
Murray	0	0
Muskogee	0	0
Noble	0	0
Nowata	32	31
Okfuskee	0	0
Oklahoma	0	4
Okmulgee	0	0
Osage	42	56
Ottawa	0	0
Pawnee	0	0
Payne	0	1
Pittsburg	0	0
Pontotoc	0	0
Pottawatomie	0	0
Pushmataha	0	0
Roger Mills	0	0
Rogers	4	7
Seminole	0	0
Sequoyah	0	0
Stephens	0	0
Texas	0	0
Tillman	0	0
Tulsa	8	5
Wagoner	0	0
Washington	475	528
Washita	0	0
Woods	1	1
Woodward	0	0
Unknown	0	0
Total	572	643

Online Campus

Please note: These data use the duplicated student head count. This means students enrolled at more than one campus will be counted in each campus' count.

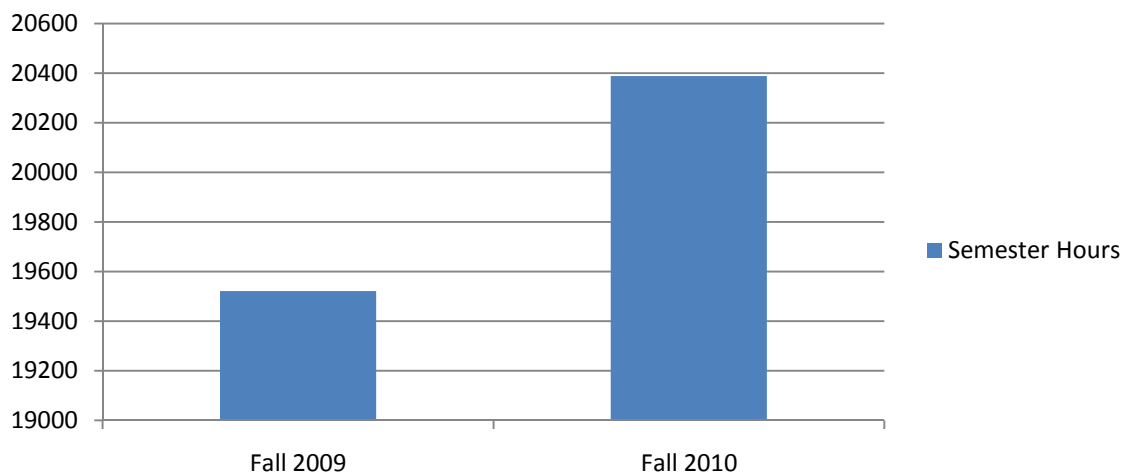
Online Duplicated Head Count and FTE

Online



	Fall 2009	Fall 2010
Online	1790	1880
FTE	1301.40	1359.20

Online Total Semester Hours



	Fall 2009	Fall 2010
Semester Hours	19521	20388

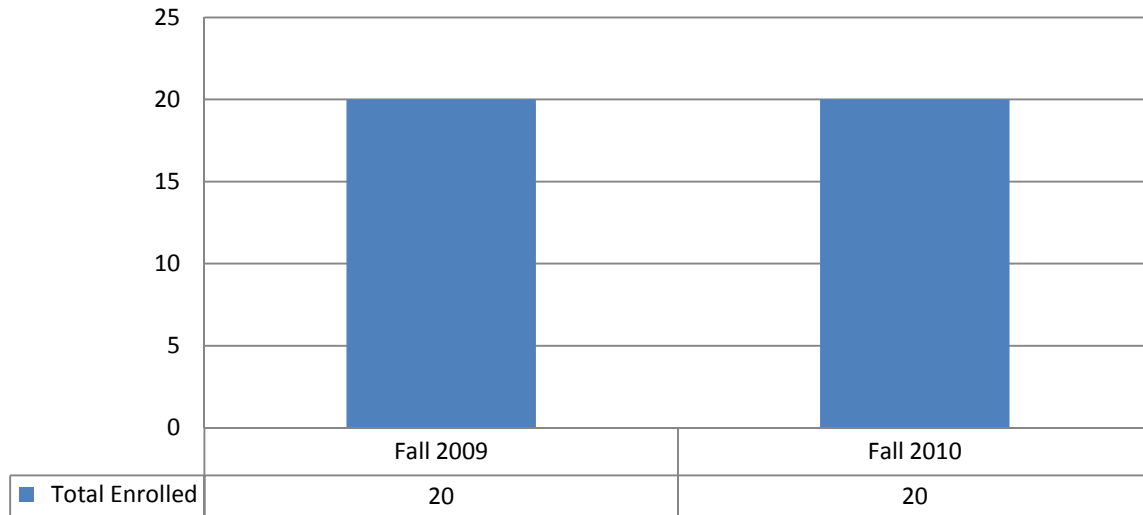
Online Head Count by Gender and Level

Please note these counts do not include concurrent high school students.

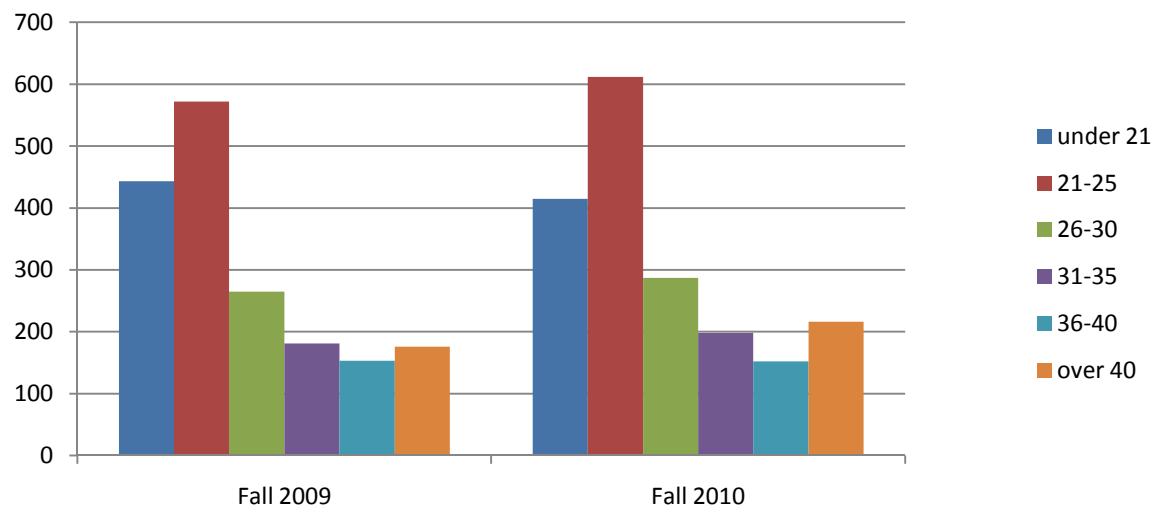
Two-Week Report Counts

	Fall 2009		Fall 2010	
	Male	Female	Male	Female
Freshmen (FT)	130	223	102	238
Freshmen (PT)	36	106	55	96
First-time Freshmen (FT)	48	81	39	68
First-time Freshmen (PT)	5	15	12	21
Sophomores (FT)	113	178	99	181
Sophomores (PT)	35	93	34	107
Juniors (FT)	90	145	83	179
Juniors (PT)	43	111	50	111
Seniors (FT)	98	136	124	143
Seniors (PT)	78	139	90	145
Special Non-Degree Seeking (FT)	0	0	0	0
Special Non-Degree Seeking (PT)	8	8	10	13
Total Full-time	431	682	408	741
Total Part-time	200	457	239	472

Online Concurrent High School Student Head Count

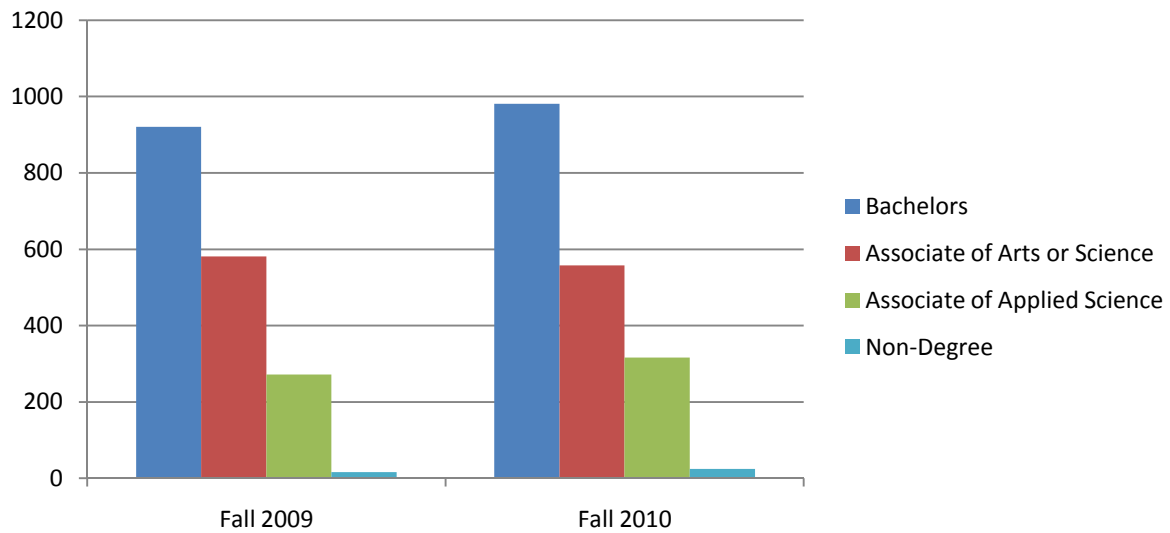


Online Head Count By Age



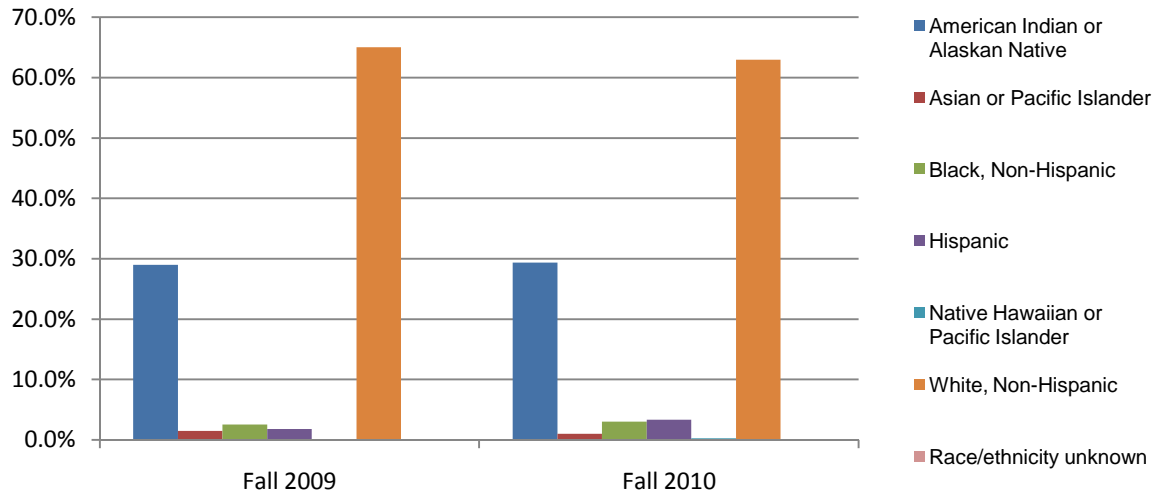
	Fall 2009	Fall 2010
under 21	443	415
21-25	572	612
26-30	265	287
31-35	181	198
36-40	153	152
over 40	176	216
Average Age	27	28

Online Head Count by Goals



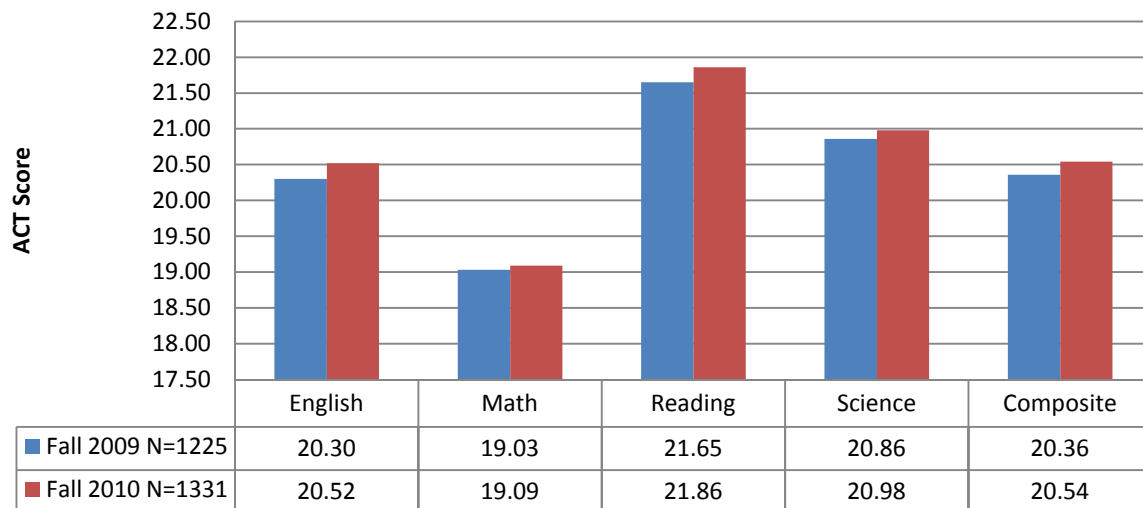
	Fall 2009	Fall 2010
Bachelors	921	981
Associate of Arts or Science	581	558
Associate of Applied Science	272	316
Non-Degree	16	25

Online Head Count by Race/Ethnicity

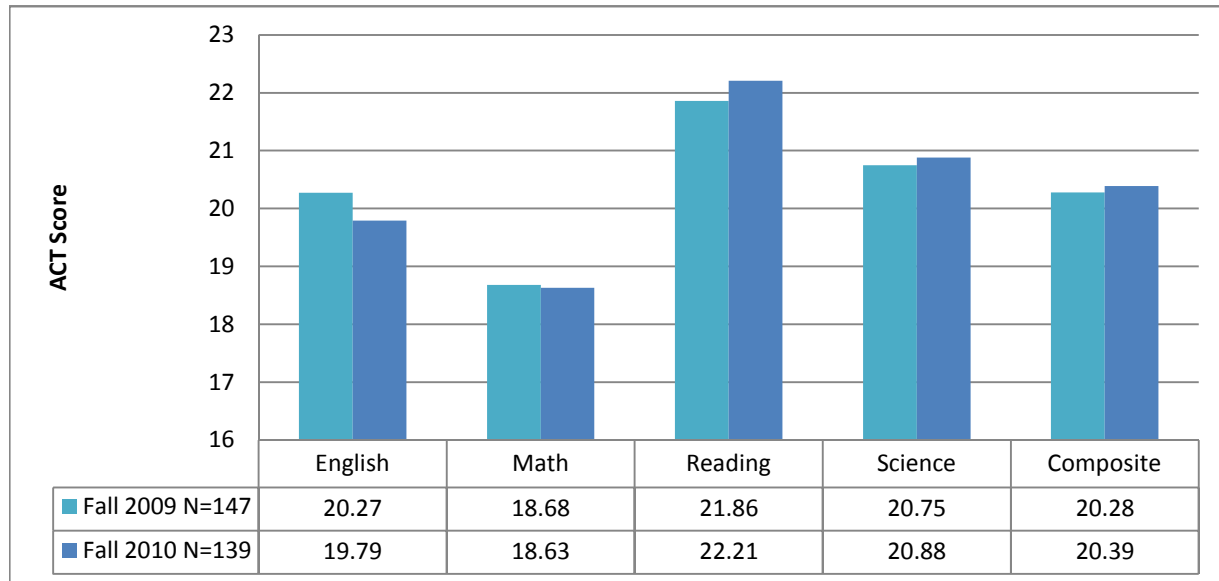


	Fall 2009	Fall 2010
American Indian or Alaskan Native	29.0%	29.4%
Asian or Pacific Islander	1.5%	1.0%
Black, Non-Hispanic	2.6%	3.0%
Hispanic	1.8%	3.4%
Native Hawaiian or Pacific Islander	0.1%	0.3%
White, Non-Hispanic	65.0%	63.0%
Race/ethnicity unknown	0.0%	0.0%

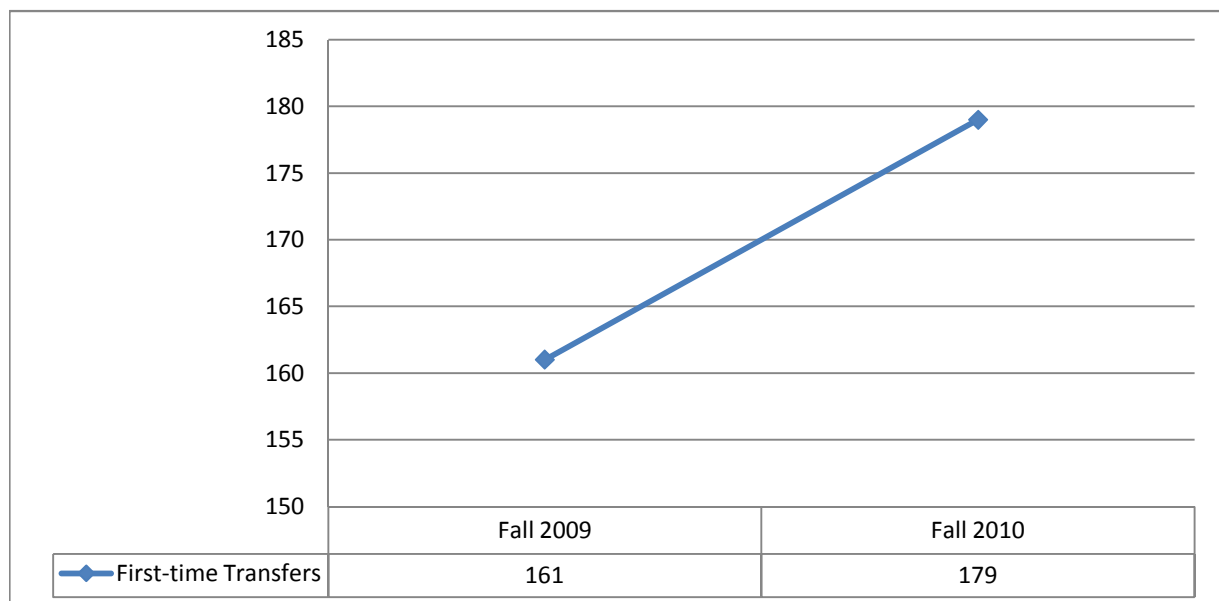
Average ACT for Online Students Who Submitted Scores



Online First-time Freshmen Average ACT Scores



Online First-time Transfers Head Count



Online Head Count by Major

Bachelor				
Degree	Code	Major/Option	Fall 2009	Fall 2010
BA	114	Communications--BA	7	8
BA	114A	Communications-Communication Arts Option	6	7
BA	114C	Communications-Corporate Communications Option	8	9
BA	114X	Communications-Radio-Television Option	14	12
BA	109	Liberal Arts--BA	25	18
BA	109E	Liberal Arts--English Option	26	39
BA	109H	Liberal Arts--Global Humanities Option	5	11
BA	123	Public Administration--BA	2	2
BA	123A	Public Administration--Accounting and Budgeting Option*	0	0
BA	123M	Public Administration--General Management Option*	0	1
BA	123H	Public Administration--Human Resources Management Option*	0	0
BA	123P	Public Administration--Public Affairs Option*	0	0
BA	123R	Public Administration--Research and Analysis Option*	0	0
BFA	119	Visual Arts--BFA	1	3
BFA	119G	Visual Arts--Graphic Design Option	14	16
BFA	119M	Visual Arts--Multimedia Option	2	5
BFA	119P	Visual Arts--Photographic Arts Option*	0	3
BFA	119A	Visual Arts--Studio Arts Option	5	8
BS	112	Biology--BS	2	1
BS	112E	Biology--Environmental Conservation Option	14	17
BS	112M	Biology--Medical/Molecular Option	69	62
BS	113	Business Administration--BS	23	13
BS	113A	Business Administration--Accounting Option	115	115
BS	113E	Business Administration--Entrepreneurship Option	8	9
BS	113F	Business Administration--Forensic Accounting Option	7	11
BS	113H	Business Administration--Human Resources Option	30	38
BS	113M	Business Administration--Management Option	111	116
BS	1113G	Business Administration--Manufacturing Management Option	1	5
BS	113K	Business Administration--Marketing Option	42	51
BS	108	Business Information Technology--BS	8	4
BS	108N	Business Information Technology--Computer Network Administration Option	51	50
BS	108S	Business Information Technology--Software Development & Multimedia Option	40	34
BS	108T	Business Information Technology--Telecommunications Foundations Option	3	2
BS	120	Community Counseling--BS	17	16

BS	117	Game Development--BS	20	26
BS	115	Justice Administration--BS	25	27
BS	118	Nursing--BS	6	7
BS	118U	Nursing (not admitted to the program)	18	26
BS	775	Organizational Leadership--BS	42	25
BS	775B	Organizational Leadership--Business Focus	9	16
BS	775C	Organizational Leadership--Communications Focus	0	1
BS	775S	Organizational Leadership--Social Studies Focus	0	1
BS	110	Social Science---BS	2	0
BS	110H	Social Science--History & Political Science Option‡	0	0
BS	110P	Social Science--Psychology & Sociology Option‡	7	2
BS	110T	Social Science--History Option	4	4
BS	110L	Social Science--Political Science Option	4	6
BS	110Y	Social Science--Psychology Option	26	33
BS	110S	Social Science--Sociology Option	6	7
BS	122	Sport Management--BS	32	41
BT	107	Applied Technology--BT	64	63
Bachelor Degree Total			921	971

Associate of Arts

Degree	Code	Major/Option	Fall 2009	Fall 2010
AA	043	Accounting	42	38
AA	001	Art-General Option‡	1	0
AA	001D	Art-Graphic Design Option‡	0	0
AA	001G	Art-Graphics Option‡	1	0
AA	001H	Art-Art History Option‡	0	0
AA	004	Business Administration	80	75
AA	121	Criminal Justice Studies	1	0
AA	121C	Criminal Justice Studies - COP Option	11	15
AA	121L	Criminal Justice Studied - Law/Justice Option	10	14
AA	011	Education - Elementary/Early Childhood Option‡	11	1
AA	011E	Elementary Education	90	94
AA	096	Law/Justice Careers-Criminal Justice‡	1	1
AA	116	Legal Assisting‡	2	1
AA	023	Liberal Arts	17	20
AA	023E	Liberal Arts--English Option	5	7
AA	023N	Liberal Arts--Native American Studies Option	0	2
AA	012	Secondary Education	29	35
AA	019	Social Science	2	1
AA	019H	Social Sciences--History Option	3	0
AA	019G	Social Sciences--Political Science Option	0	0
AA	019P	Social Sciences--Psychology Option	14	15
AA	019S	Social Sciences--Sociology Option	3	4
Associate of Arts Total			323	323

Associate of Science

Degree	Code	Major/Option	Fall 2009	Fall 2010
AS	003	Biological Sciences	15	16
AS	097	Computer Science	24	32
AS	028	Physical Science	2	0
AS	028C	Physical Science-Chemistry Option	1	0
AS	028E	Physical Science-Engineering, Physics, Math Option	9	7
AS	028G	Physical Science-Geology Option	2	0
AS	033N	Pre-Nursing‡	2	0
Associate of Science Total			55	55

Associate of Applied Science

Degree	Code	Major/Option	Fall 2009	Fall 2010
AAS	111	Applied Technology-AAS	19	17
AAS	111B	Applied Technology--Business, Information, & Engineering Option	4	11
AAS	111C	Applied Technology-Construction Option	0	1
AAS	111M	Applied Technology-Manufacturing Option	1	3
AAS	111P	Applied Technology-Public & Health Services Option	2	4
AAS	111A	Applied Technology-Telecommunications Option	0	0
AAS	111T	Applied Technology-Transportation Management Option	0	0
AAS	094E	Emergency Medical Services	26	29
AAS	054	Nursing	36	29
AAS	054B	Nursing-Bridge NREMT-Paramedic/LPN to RN	9	2
AAS	054U	Nursing (not admitted to program)	175	219
Associate of Applied Science Total			272	315

Misc

Degree	Code	Major/Option	Fall 2009	Fall 2010
	777	Non-Degree Seeking	16	25
	888	Undecided	203	191
Misc Total			219	216

*Pending approval by the Oklahoma State Regents for Higher Education.

‡Deleted

Online Head Count by County (Oklahoma)

	Fall 2009	Fall 2010
Adair	6	6
Alfalfa	0	0
Atoka	0	0
Beaver	0	0
Beckham	0	1
Blaine	1	1
Bryan	0	0
Caddo	0	1
Canadian	5	3
Carter	1	1
Cherokee	11	12
Choctaw	2	2
Cimarron	0	0
Cleveland	4	9
Coal	0	0
Comanche	6	2
Cotton	0	0
Craig	50	43
Creek	13	13
Custer	0	1
Delaware	28	27
Dewey	1	2
Ellis	0	0
Garfield	1	1
Garvin	0	1
Grady	2	4
Grant	0	0
Greer	0	0
Harmon	0	0
Harper	0	0
Haskell	0	0
Hughes	0	0
Jackson	2	2
Jefferson	0	0
Johnston	0	0
Kay	9	10
Kingfisher	3	0
Kiowa	4	1
Latimer	2	2
LeFlore	11	8
Lincoln	3	2
Logan	1	1
Love	1	0
McClain	2	0
McCurtain	0	3

McIntosh	1	0
Major	0	0
Marshall	1	1
Mayes	239	272
Murray	0	0
Muskogee	3	5
Noble	0	0
Nowata	44	51
Okfuskee	0	0
Oklahoma	20	17
Okmulgee	16	11
Osage	53	58
Ottawa	8	10
Pawnee	7	3
Payne	6	2
Pittsburg	0	1
Pontotoc	0	1
Pottawatomie	0	3
Pushmataha	0	1
Roger Mills	0	0
Rogers	592	574
Seminole	1	2
Sequoyah	3	2
Stephens	1	2
Texas	0	0
Tillman	0	0
Tulsa	281	330
Wagoner	27	32
Washington	233	250
Washita	0	0
Woods	1	1
Woodward	2	1
Unknown	0	3
Total	1708	1792