

# INSTITUTIONAL FACT BOOK

2009 Edition, Version 1

---

ROGERS STATE UNIVERSITY  
Claremore, Oklahoma

---

Office of Institutional Research,  
Planning, and Assessment



## Table of Contents

Introduction .....	4
RSU Fast Facts.....	8
Organization Chart.....	10
Unduplicated Head Count and FTE .....	11
Total Semester Hours .....	11
Duplicated Head Count by Site .....	12
Unduplicated Head Count by Site .....	12
Head Count by Gender and Level .....	13
Concurrent High School Student Enrollment .....	13
First-time Transfer Head Count .....	14
Unduplicated Head Count by Age.....	14
Enrollment by Goal .....	15
Enrollment by Majors .....	16
Bachelor .....	16
Associate in Arts.....	17
Associate in Science .....	18
Associate in Applied Science .....	18
Miscellaneous.....	18
Enrollment by County (Oklahoma).....	19
Enrollment by City (Oklahoma): With Ten or More .....	21
Enrollment by Race/Ethnicity.....	22
Average ACT Score for All Enrolled Students Who Submitted Scores.....	22
Distribution of Student Enrollment by Credit Hours .....	23
Online Enrollment .....	24
First-time Freshmen Average ACT Scores .....	24
First-time Freshmen by High School: With Ten or More.....	25
First-time Freshmen Enrollment by City (Oklahoma): With Ten or More .....	26
First-time Transfers by Last Institution Attended: With Five or More .....	26
Degrees Awarded .....	27
Faculty Profile .....	30
Student to Faculty Ratio.....	30
Full-time Faculty by Rank .....	30
Tuition and Fees .....	31
Funding History E & G I .....	31

---

RSU Revenue History .....	31
E&G I Expenditures by Function .....	32
Percent of Expenditures by Function .....	32
E & G I Expenditures by Object Category.....	32
Percent of Budget Expenditures by Object .....	33
Statements of Cash Flows for the Years Ended June 30 .....	33
Summary of Total Assets, Liabilities, and .....	34
Net Assets for the Years Ended June 30.....	34
Holdings of Stratton Taylor Library by Volume Type .....	34
Summary of Stratton Taylor Library Purchases .....	34
Student Clubs and Organizations .....	35
Athletics .....	35

## Introduction

- **Administration**
  - Dr. Larry Rice, President
  - Dr. Richard Beck, Vice President for Academic Affairs
  - Dr. Ray Brown, Vice President for Economic and Community Development
  - Dr. Danette Boyle, Vice President for Development and Alumni
  - Mr. Tom Volturo, Executive Vice President for Administration and Finance
  - Mr. Mark Meadors, Comptroller/Assistant Vice President for Business Affairs
  - Ms. Linda Andrews, Assistant Vice President for Institutional Research, Planning and Assessment
  - Dr. Tobie Titsworth, Vice President for Student Affairs
  - Mr. Bill Beierschmitt, Provost and Chief Operating Office, Bartlesville Campus
  - Ms. Sherry Alexander, Director, Pryor Campus
- **Established:** 1999 (Previously: Eastern Oklahoma Preparatory Academy, 1909-1917; Oklahoma Military Academy, 1917-1971; Claremore Junior College, 1971-1982; Rogers State College, 1982-1996; Rogers University, 1996-1998)
- **Congressional District:** Second
- **University Accreditation:** The Higher Learning Commission (NCA), North Central Association of Colleges and Schools, and the National League for Nursing Accrediting Commission
- **Carnegie Classification:** Level 4-year or above; Public; Baccalaureate/Associate's Colleges
- **U.S. Department of Education's Central Registry Number:** 1736017987A6
- **FICE Code:** 003168
- **U.S. Department of Education IPEDS Number:** 207661
- **Schools**
  - School of Business and Technology
  - School of Liberal Arts
  - School of Mathematics, Science, and Health Sciences
- **Departments**
  - Applied Technology
  - Business
  - Sport Management
  - Communications
  - English and Humanities
  - Fine Arts
  - History and Political Science
  - Psychology, Sociology, and Criminal Justice
  - Biology
  - Health Sciences
  - Mathematics and Physical Sciences
- **Calendar:** Semester, 16 weeks
- **Minutes from Tulsa:** 30
- **Known for:** Personal attention, small class sizes, affordability, proximity to Tulsa
- **Classes offered:** on-site at three campuses, online, via television
- **Mascot:** Hillcat

- **University colors:** blue and crimson (red)
- **Unique features:** RSU Radio FM 91.3, RSU Public Television, Innovation Center (economic development and business incubator), RSU Foundation, TRIO student support programs, Child Development Center, 120-acre nature reserve, Oklahoma Military Academy Museum, athletic fields, RSU Police Department, three full-service campuses
- **Admission requirements at a glance:** for bachelor's degree programs, 20 ACT or above or 940 SAT or above, 2.7 high school GPA or above; for associate's degree programs, open admissions; transfer students, 2.0 college GPA or above
- **Total faculty:** 245
- **Total full-time faculty:** 104
- **Total part-time faculty:** 141
- **Female students:** 63 percent
- **Male students:** 37percent
- **Students age 18-25:** 62 percent
- **Students age 26 and over:** 33 percent
- **Students from Oklahoma:** 96 percent
- **Students from Out-of-state:** 4 percent
- **Cooperative & articulation agreements:** Tulsa Community College, Northeastern Oklahoma A&M College (NEO), Tulsa Technology Centers (all campuses), Northeast Technology Centers (all campuses), Coffeyville (Kan.) Community College, Independence (Kan.) Community College
- **Academic & Leadership Programs:** Honors Program, President's Leadership Council, Washington Center Internship Program, Study Abroad Program
- **Athletics:** Men's and women's basketball, baseball, softball, men's and women's soccer, men's and women's golf, rodeo; member of the National Association of Intercollegiate Athletics (NAIA) and Sooner Athletic Conference (SAC)
- **Housing:** On-campus residence hall and student apartments (Claremore campus)
- **Food:** Hillcat Hut and RSU Convenience Store located in the Centennial Center
- **Financial aid:** all forms available; 67 percent of students receive financial aid; application deadline, June 1 for fall semester; average financial aid package, \$8240

- **Degrees Offered by Level**

- Bachelor of Arts*

- Communications—Communication Arts Option
    - Communications—Corporate Communications Option
    - Communications—Radio-Television Option
    - Liberal Arts—English Option
    - Liberal Arts—Global Humanities Option
    - Public Administration

- Bachelor of Fine Art*

- Visual Arts—Graphic Design Option
    - Visual Arts—Multimedia Option
    - Visual Arts—Studio Art Option

- Bachelor of Science*

- Biology—Environmental Conservation Option
    - Biology—Medical & Molecular Option
    - Business Administration—Accounting Option
    - Business Administration—Entrepreneurship Option
    - Business Administration—Forensic Accounting Option
    - Business Administration—Human Resources Management Option
    - Business Administration—Management Option
    - Business Administration—Manufacturing Management Option
    - Business Administration—Marketing Option
    - Business Information Technology—Computer Network Administration Option
    - Business Information Technology—Software Development & Multimedia Option
    - Business Information Technology—Telecommunications Foundations Option
    - Community Counseling
    - Game Development
    - Justice Administration
    - Nursing
    - Organizational Leadership—Business Studies Focus
    - Organizational Leadership—Communication Strategies Focus
    - Organizational Leadership—Liberal Studies Focus
    - Organizational Leadership—Social Studies Focus
    - Social Science—History Option
    - Social Science—Political Science Option
    - Social Science—Psychology Option
    - Social Science—Sociology Option
    - Sport Management

- Bachelor of Technology*

- Applied Technology

- Associate in Arts*

- Accounting
    - Business Administration
    - Criminal Justice Studies—COP Option
    - Criminal Justice Studies—Law/Justice Option
    - Elementary Education
    - Secondary Education
    - Legal Assisting
    - Liberal Arts—General Option

Liberal Arts—English Option  
Liberal Arts—Native American Studies Option  
Social Sciences—History Option  
Social Sciences—Political Science Option  
Social Sciences—Psychology Option  
Social Sciences—Sociology Option

*Associate in Science*

Biological Science  
Computer Science  
Physical Science  
Physical Science—Chemistry Option  
Physical Science—Engineering/Physics/Math Option  
Physical Science—Geology Option

*Associate in Applied Science*

Applied Technology  
Emergency Medical Services  
Nursing  
Nursing—Bridge NREMT-Paramedic/LPN to RN Option

Please note that, to the extent possible, the data presented on the following pages represent snapshots taken at the same time of the academic year. In some instances, however, variations in reporting cycles have limited our ability to do so. For this reason, the reader who attempts to cross-reference certain data tables may find discrepancies. These discrepancies are not due to inaccuracies in the data.

## RSU Fast Facts

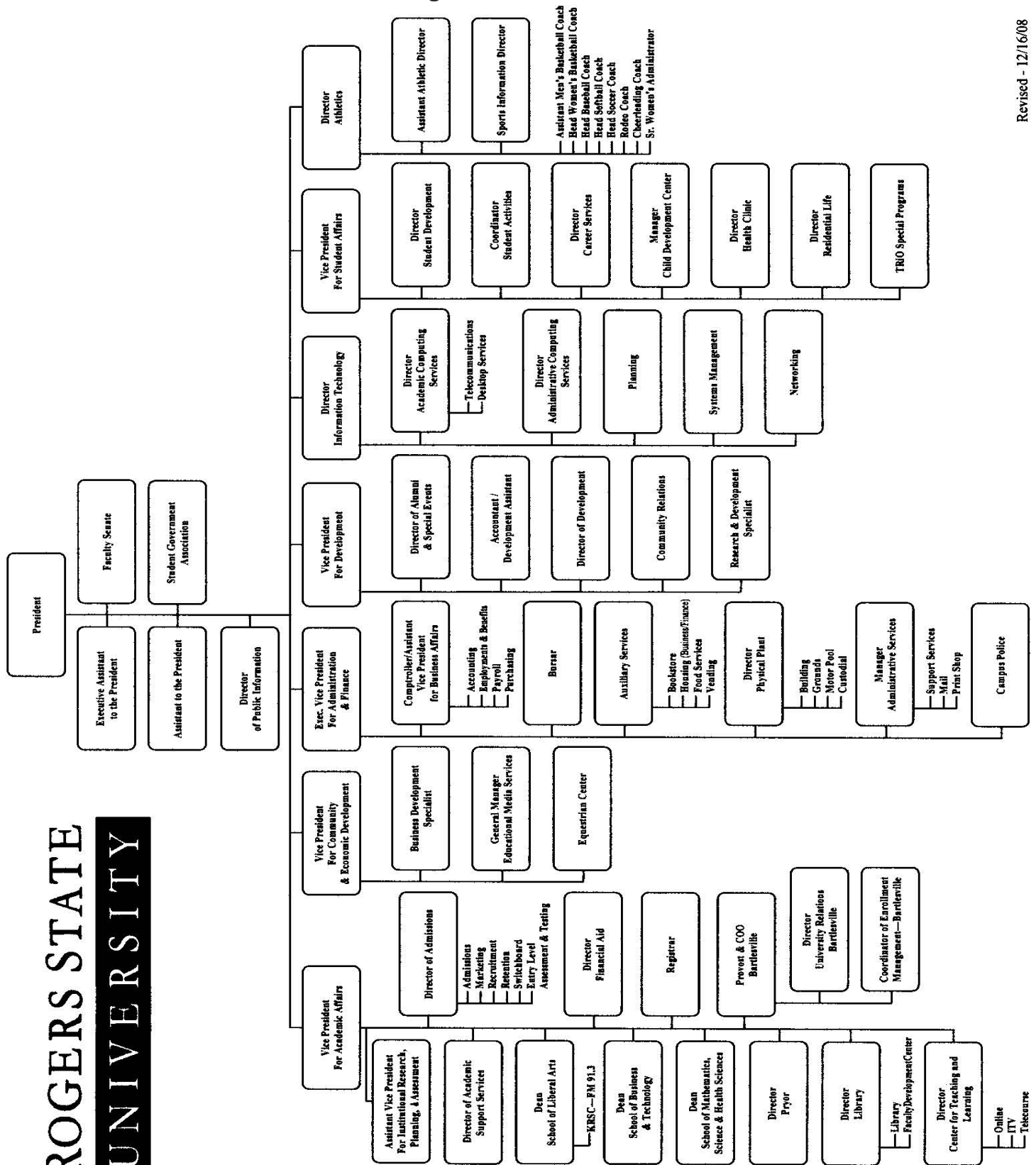
- RSU is a dynamic, progressive university widely recognized for its high-quality academic programs, distance learning options, and high-technology learning environment.
- In fall 2009, over 4,100 students enrolled at RSU. Since RSU was accredited as a four-year university in 2000, enrollment has grown by over 86 percent (based on student credit hours.)
- RSU is the only public four-year, residential university in the Tulsa area and is located near several major Tulsa high-technology employers and the Tulsa International Airport.
- In 2004, RSU was granted continued accreditation from the Higher Learning Commission of the North Central Association of Colleges and Schools without further required evaluation for 10 years – a rarity in higher education and a major accomplishment achieved by few universities.
- RSU has implemented a wide variety of new bachelor degree programs in high-demand areas such as business administration, communications, and nursing, as well as unique disciplines such as game development, justice administration, and sport management. RSU is one of only three universities in Oklahoma to offer both bachelor and associate degrees.
- In 2005, RSU relocated its Bartlesville campus to a historic nine-story downtown building, enabling the university to offer more classes, more degree programs, and more services for area residents. Major renovations have occurred and will continue as services expand.
- RSU has completed a major \$1.3 million expansion of its Pryor campus, doubling the size of its facility, providing additional classrooms, laboratories, and student-focused amenities. RSU is the only university serving the Pryor and Mayes County area.
- RSU recently opened its new \$13 million Centennial Center – a state-of-the-art, two-level, 50,000 square-foot facility that combines a variety of student programs under one roof, serves as a central location for students to study and socialize, and provides a focal point for the RSU campus in Claremore.
- RSU has transformed its main campus in Claremore through several new building and renovation projects, including the Stratton Taylor Library, on-campus student living community, several athletic fields and the Innovation Center, a business incubator. All major historic buildings on the Claremore campus have been completely renovated. Preparatory Hall and Meyer Hall are listed on the National Register of Historic Places. RSU's beautiful main campus also features a military museum, an art gallery, Will Rogers Auditorium, two lakes, a 120-acre nature conservatory, amphitheater, and nature trails for the community. The Claremore campus is accentuated with some of the largest and most elaborate sculptures located on any university campus in Oklahoma, including sculptures of George Washington, Thomas Jefferson, and Abraham Lincoln.
- RSU is the only university in Oklahoma to operate a full-power public television station, reaching more than 1 million viewers across Oklahoma and surrounding states. The university also operates a radio station which serves as a learning laboratory for communications students.
- RSU operates its own radio station, RSU Radio (KRSC) 91.3 FM, which can be heard in Claremore, Tulsa, and across northeast Oklahoma. RSU Radio is the only alternative college radio station on a campus in Oklahoma. Much of the programming is produced and hosted by RSU students.
- Four endowed faculty chairs have been established at RSU. The private gifts funding these faculty chairs have been matched dollar for dollar by the Oklahoma State Regents for Higher Education's Endowment Trust Fund. RSU's endowed faculty chairs are: the Kunz Endowed Chair in Communications, funded by Warner Brothers (WB) television; the



Sarkeys Endowed Chair in Business Information Technology, funded by the Sarkeys Foundation; the John W. Norman Endowed Chair in Business Information Technology, funded by anonymous donors; and the Oliver Dewey Mayor Endowed Chair, funded by the Oliver Dewey Mayor Foundation for an endowed faculty position at RSU's campus in Pryor.

- RSU is dedicated to providing programs and activities to foster student development outside the classroom. The Office of Student Affairs provides services to promote student development, diversity, campus activities, career services, and more. Nearly 30 student organizations are active on campus.
- The RSU Student Health Center is located in Downs Hall on the Claremore campus. The center provides health care for students, faculty, and staff for treating minor injuries and illnesses, as well as providing individual, group, and family counseling for students.
- RSU's Innovation Center is a 7,000-square-foot facility that houses a business incubator and provides office space for several economic development organizations. Established in 2002, the Innovation Center fosters regional economic development and addresses the educational needs of business and industry.
- RSU's emergency medical service program is one of only two paramedic programs in the state of Oklahoma where all courses are offered by an institution of higher learning and the only such program in northeast Oklahoma.
- RSU has a \$2.2 million off-campus equestrian center that houses the Bit by Bit Therapeutic Horseback Riding Program and the RSU Rodeo Team. The Frank and Wanda Sanders Family Trust donated 23 acres of land for the facility, which is located just off U.S. Highway 169 five miles south of Oologah. Bit by Bit is a cooperative program between RSU and Oologah-Talala Public Schools to promote physical and mental health for disabled children and adults through horseback riding.
- The Oklahoma Military Academy Museum, located on the second floor of Meyer Hall on the RSU campus in Claremore, tells the story of the more than 10,000 cadets who attended the Oklahoma Military Academy (OMA) from 1919 to 1971. The museum, which is open to the public, features thousands of historical documents, photographs, military uniforms, and other memorabilia. The OMA, one of the predecessor institutions of RSU, was known throughout the U.S. as the "West Point of the Southwest." Distinguished graduates include Lt. Gen. William E. Potts, Admiral William J. Crowe, and Col. Edwin P. Ramsey.
- A collection of 57 porcelain sculptures of birds in their natural habitat by Edward Marshall Boehm, one of the leading wildlife artists of the 20th Century, was donated to RSU by Bill and Betty Holman of Claremore. The collection can be viewed by the public at the university's Stratton Taylor Library.

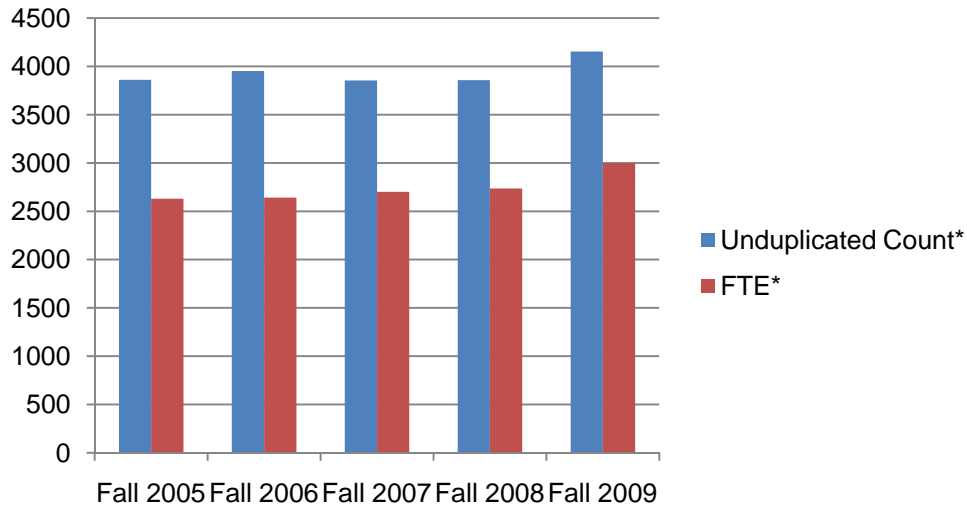
### Organization Chart



Revised - 12/16/08

**ROGERS STATE UNIVERSITY**

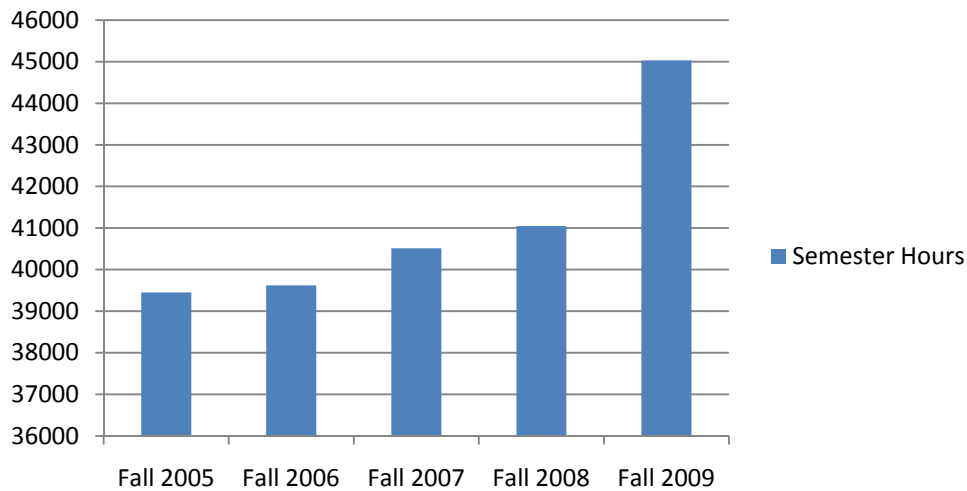
### Unduplicated Head Count and FTE



	Fall 2005	Fall 2006	Fall 2007	Fall 2008	Fall 2009
<b>Unduplicated Count*</b>	3861	3952	3855	3858	4154
<b>FTE*</b>	2630	2641	2701	2736	3002

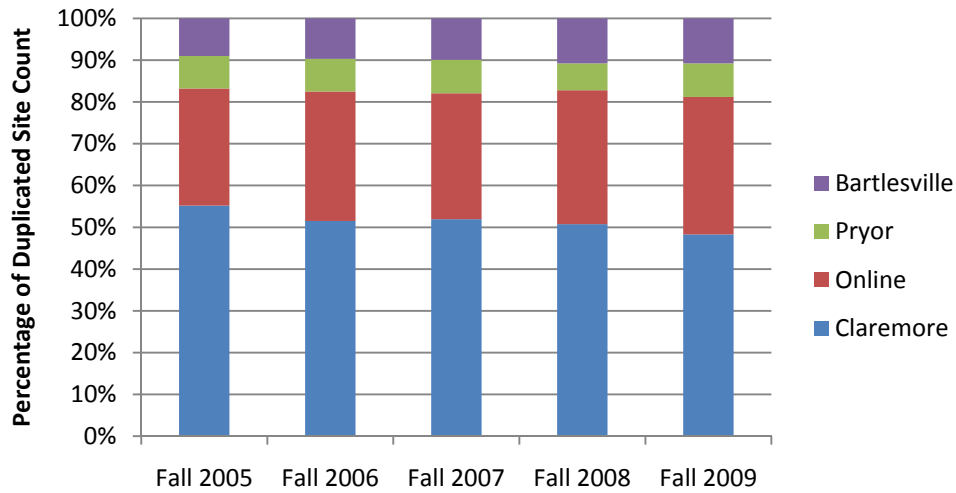
\*Based on Preliminary Enrollment Data

### Total Semester Hours



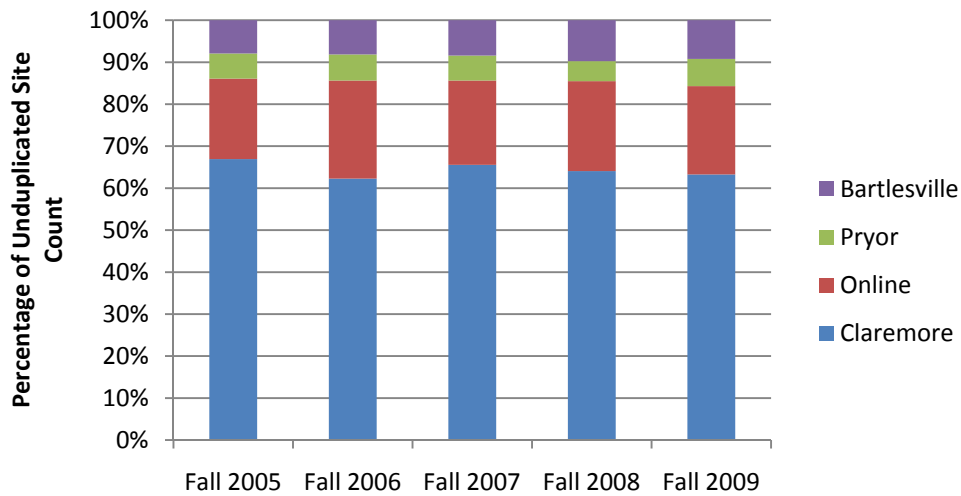
	Fall 2005	Fall 2006	Fall 2007	Fall 2008	Fall 2009
<b>Semester Hours</b>	39451	39621	40512	41046	45031

### Duplicated Head Count by Site



	Fall 2005	Fall 2006	Fall 2007	Fall 2008	Fall 2009
<b>Claremore</b>	2409	2327	2492	2545	2629
<b>Online</b>	1223	1398	1447	1609	1790
<b>Pryor</b>	339	353	384	322	438
<b>Bartlesville</b>	393	438	475	540	586

### Unduplicated Head Count by Site



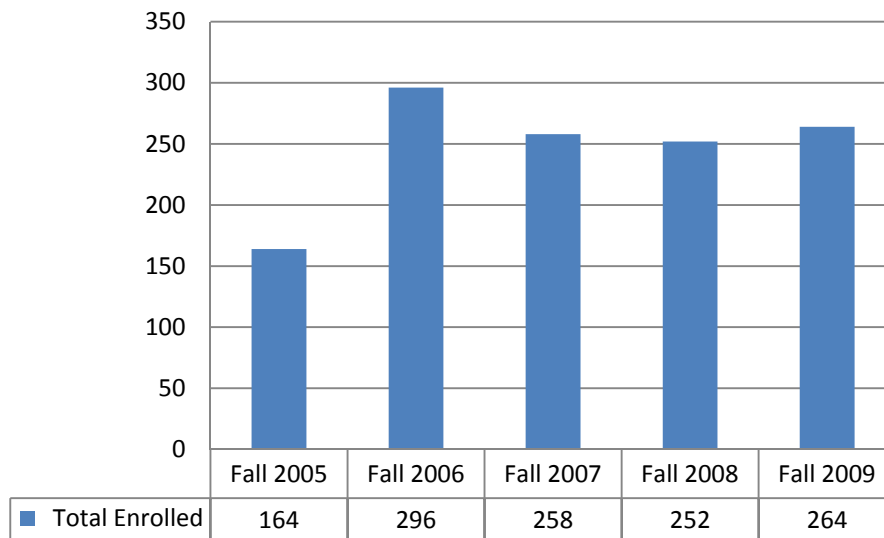
	Fall 2005	Fall 2006	Fall 2007	Fall 2008	Fall 2009
<b>Claremore</b>	2409	2327	2492	2454	2629
<b>Online</b>	690	872	764	821	874
<b>Pryor</b>	215	233	227	182	269
<b>Bartlesville</b>	285	304	319	373	382

### Head Count by Gender and Level

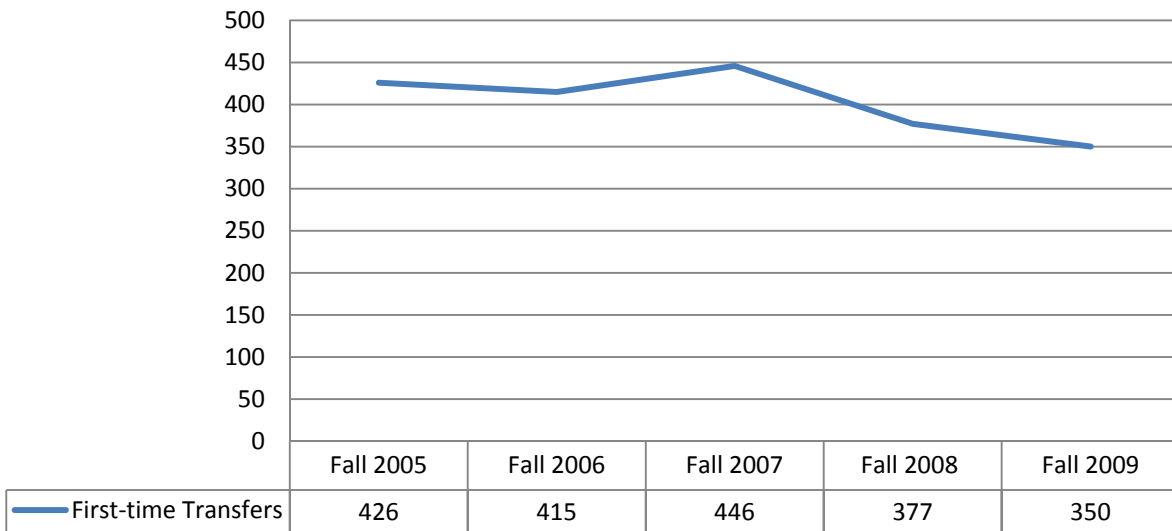
Please note these counts do not include concurrent high school students.

	Fall 2005		Fall 2006		Fall 2007		Fall 2008		Fall 2009	
	Male	Female	Male	Female	Male	Female	Male	Female	Male	Female
<b>Freshmen (FT)</b>	465	777	485	703	476	749	467	692	511	776
<b>Freshmen (PT)</b>	252	425	261	435	149	325	141	271	125	244
<b>First-time Freshmen (FT)</b>	265	418	262	337	255	388	251	340	293	437
<b>First-time Freshmen (PT)</b>	111	129	82	107	44	64	51	63	38	64
<b>Sophomores (FT)</b>	127	231	130	241	172	296	179	273	206	313
<b>Sophomores (PT)</b>	99	245	102	225	96	208	81	209	73	192
<b>Juniors (FT)</b>	75	138	104	146	125	187	141	227	168	252
<b>Juniors (PT)</b>	73	176	69	187	74	175	81	157	66	181
<b>Seniors (FT)</b>	82	142	81	122	87	111	120	189	163	224
<b>Seniors (PT)</b>	136	193	114	186	112	206	106	202	119	239
<b>Special Non-Degree Seeking (FT)</b>	0	0	0	0	0	0	0	1	0	0
<b>Special Non-Degree Seeking (PT)</b>	21	40	25	40	23	26	26	43	20	18

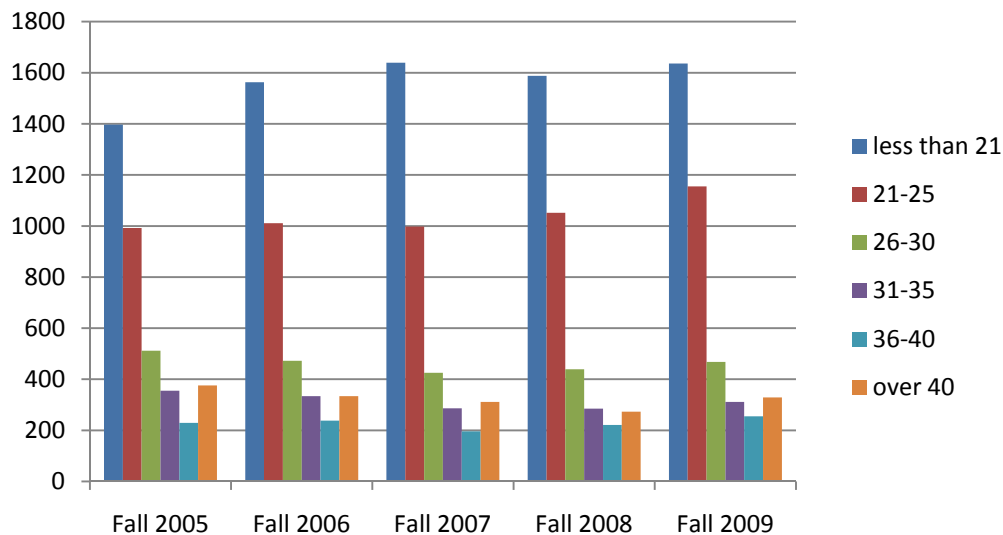
### Concurrent High School Student Enrollment



### First-time Transfer Head Count

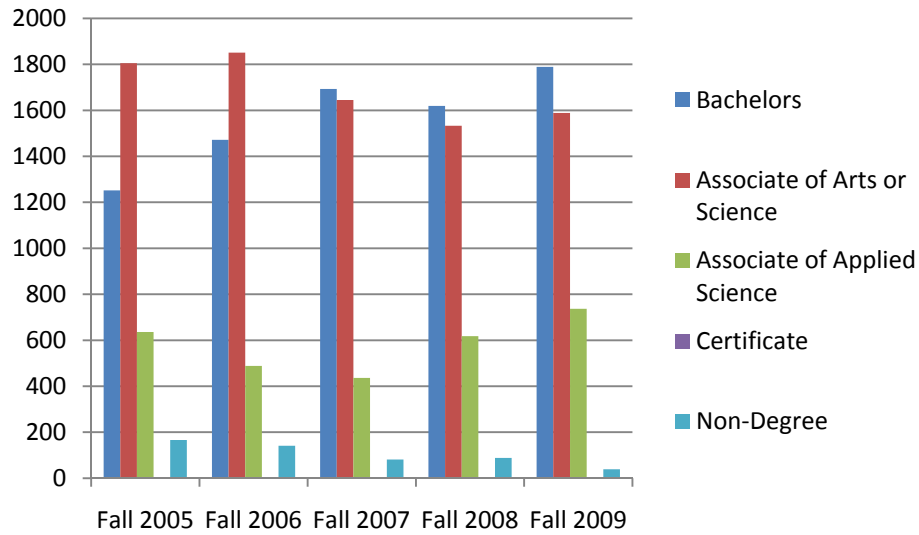


### Unduplicated Head Count by Age



	Fall 2005	Fall 2006	Fall 2007	Fall 2008	Fall 2009
<b>less than 21</b>	1397	1563	1639	1588	1636
<b>21-25</b>	992	1011	998	1052	1155
<b>26-30</b>	512	472	425	439	468
<b>31-35</b>	355	334	286	285	311
<b>36-40</b>	229	238	196	221	255
<b>over 40</b>	376	334	311	273	329

### Enrollment by Goal



	Fall 2005	Fall 2006	Fall 2007	Fall 2008	Fall 2009
<b>Bachelors</b>	1252	1472	1693	1619	1789
<b>Associate of Arts or Science</b>	1805	1851	1645	1533	1589
<b>Associate of Applied Science</b>	636	488	436	618	737
<b>Certificate</b>	2	0	0	0	0
<b>Non-Degree</b>	166	141	81	88	39

## Enrollment by Majors

(Please note that totals of the values presented in the following tables will not match the counts of student goals presented in the previous figure due to undecided majors.)

### Bachelor

		Fall 2005	Fall 2006	Fall 2007	Fall 2008	Fall 2009
107	Applied Technology--BT	71	77	92	49	68
112	Biology--BS	14	18	27	19	16
112E	Biology--Environmental Conservation Option	55	63	58	52	56
112M	Biology--Medical/Molecular Option	152	164	198	212	229
113	Business Administration--BS	32	90	75	63	43
113A	Business Administration-Accounting Option	87	112	147	139	169
113E	Business Administration-Entrepreneurship Option	0	2	12	10	15
113F	Business Administration-Forensic Accounting Option	0	0	0	1	8
113H	Business Administration-Human Resources Option	3	18	31	30	38
113M	Business Administration-Management Option	180	216	186	165	177
1113G	Business Administration-Manufacturing Management Option	0	0	0	0	3
113K	Business Administration-Marketing Option	0	1	35	49	74
108	Business Information Technology--BS	45	51	32	22	13
108N	Business Information Technology--Computer Network Administration Option	21	32	45	48	58
108S	Business Information Technology--Software Development & Multimedia Option	32	35	30	33	43
108T	Business Information Technology--Telecommunications Foundations Option	0	2	1	4	4
117	Game Development--BS	0	15	28	27	32
114	Communications--BA	34	38	25	29	18
114A	Communications-Communication Arts Option	0	0	6	7	7
114C	Communications-Corporate Communications Option	16	15	13	17	23
114X	Communications-Radio-Television Option	17	27	23	33	49
120	Community Counseling--BS	0	0	9	24	48
115	Justice Administration--BS	46	59	54	66	59
115L	Justice Administration--Law Enforcement Option	0	7	0	2	0
109	Liberal Arts--BA	92	127	101	44	33
109E	Liberal Arts--English Option	0	0	6	25	36
109H	Liberal Arts--Global Humanities Option	0	0	1	5	11
118	Nursing--BS	0	0	20	12	19
118U	Nursing (not admitted to the program)	0	0	15	35	35
775	Organizational Leadership--BS	0	0	5	25	42
775B	Organizational Leadership--Business Focus	0	0	2	2	9
775C	Organizational Leadership--Communications Focus	0	0	0	0	1
123	Public Administration--BA	0	0	0	0	3



		Fall 2005	Fall 2006	Fall 2007	Fall 2008	Fall 2009
110	Social Science--BS	28	17	6	3	4
110H	Social Science--History & Political Science Option	30	37	24	13	3
110P	Social Science--Psychology & Sociology Option	141	155	102	47	19
110T	Social Science--History Option	0	0	6	13	17
110L	Social Science--Political Science Option	0	0	3	7	13
110Y	Social Science--Psychology Option	0	0	44	78	92
110S	Social Science--Sociology Option	0	0	2	14	16
122	Sport Management--BS	0	0	47	73	83
119	Visual Arts--BFA	0	0	18	24	12
119G	Visual Arts--Graphic Design Option	0	0	17	27	43
119M	Visual Arts--Multimedia Option	0	0	5	6	16
119A	Visual Arts--Studio Arts Option	0	0	21	22	31
	Bachelor Degree Total	1096	1378	1572	1576	1788

### Associate in Arts

		Fall 2005	Fall 2006	Fall 2007	Fall 2008	Fall 2009
043	Accounting	57	56	54	58	77
001	Art-General Option (deleted)	13	19	13	13	4
001D	Art-Graphic Design Option (deleted)	0	0	9	4	2
001G	Art-Graphics Option (deleted)	25	22	7	1	1
001H	Art-Art History Option (deleted)	0	1	0	2	0
053	Broadcasting (deleted)	2	2	1	1	0
004	Business Administration	219	206	150	148	154
121	Criminal Justice Studies	0	0	6	6	10
121C	Criminal Justice Studies - COP Option	0	0	14	15	36
121L	Criminal Justice Studied - Law/Justice Option	0	0	22	26	20
011	Education - Elementary/Early Childhood Option (deleted)	156	183	78	26	15
011E	Elementary Education	0	0	138	145	174
012	Secondary Education	87	90	68	53	71
096	Law & Justice Careers (deleted)	57	71	10	5	1
116	Legal Assisting	0	9	17	7	6
023	Liberal Arts	87	69	52	41	22
023E	Liberal Arts--English Option	7	6	5	7	12
023N	Liberal Arts-Native American Studies Option	1	4	1	0	2
053X	Radio-Television (deleted)	24	15	3	1	0
019	Social Science	18	17	11	7	8
019H	Social Sciences--History Option	2	3	5	4	5
019G	Social Sciences--Political Science Option	5	2	2	5	4
019P	Social Sciences--Psychology Option	70	48	50	41	37

		Fall 2005	Fall 2006	Fall 2007	Fall 2008	Fall 2009
<b>019S</b>	Social Sciences--Sociology Option	10	10	6	12	7
	Associate of Arts Total	840	833	722	628	668

### Associate in Science

		Fall 2005	Fall 2006	Fall 2007	Fall 2008	Fall 2009
<b>003</b>	Biological Sciences	29	31	38	41	50
<b>003B</b>	Biological Sciences-Biology Option (deleted)	24	25	11	4	0
<b>003M</b>	Biological Sciences-Medical/Molecular Option (deleted)	52	22	4	3	1
<b>097</b>	Computer Science	54	48	37	40	37
<b>028</b>	Physical Science	1	2	7	6	4
<b>028C</b>	Physical Science-Chemistry Option	9	8	13	7	5
<b>028E</b>	Physical Science-Engineering, Physics, Math Option	17	31	24	18	27
<b>028G</b>	Physical Science-Geology Option	4	3	5	4	7
<b>028P</b>	Physical Science-Pre-Engineering Option (deleted)	18	4	3	0	0
<b>033N</b>	Pre-Nursing (deleted)	405	366	270	10	3
	Associate of Science Total	613	540	412	133	134

### Associate in Applied Science

		Fall 2005	Fall 2006	Fall 2007	Fall 2008	Fall 2009
<b>111</b>	Applied Technology-AAS	128	35	32	45	41
<b>111B</b>	Applied Technology--Business, Information, & Engineering Option	37	29	32	15	6
<b>111C</b>	Applied Technology-Construction Option	9	11	6	1	0
<b>111M</b>	Applied Technology-Manufacturing Option	20	23	6	8	3
<b>111P</b>	Applied Technology-Public & Health Services Option	120	146	30	6	6
<b>111A</b>	Applied Technology-Telecommunications Option	2	2	2	1	0
<b>111T</b>	Applied Technology-Transportation Management Option	5	3	1	0	0
<b>094E</b>	Emergency Medical Services	65	90	77	77	86
<b>054</b>	Nursing	151	110	149	59	114
<b>054B</b>	Nursing-Bridge NREMT-Paramedic/LPN to RN Option	11	10	2	5	15
<b>054U</b>	Nursing (not admitted to program)	0	0	86	396	466
	Associate of Applied Science Total	548	459	423	613	737

### Miscellaneous

		Fall 2005	Fall 2006	Fall 2007	Fall 2008	Fall 2009
<b>777</b>	Non-Degree Seeking	166	141	80	88	40
<b>888</b>	Undecided	530	580	643	820	787
	Misc Total	696	721	723	908	827

**Enrollment by County (Oklahoma)**

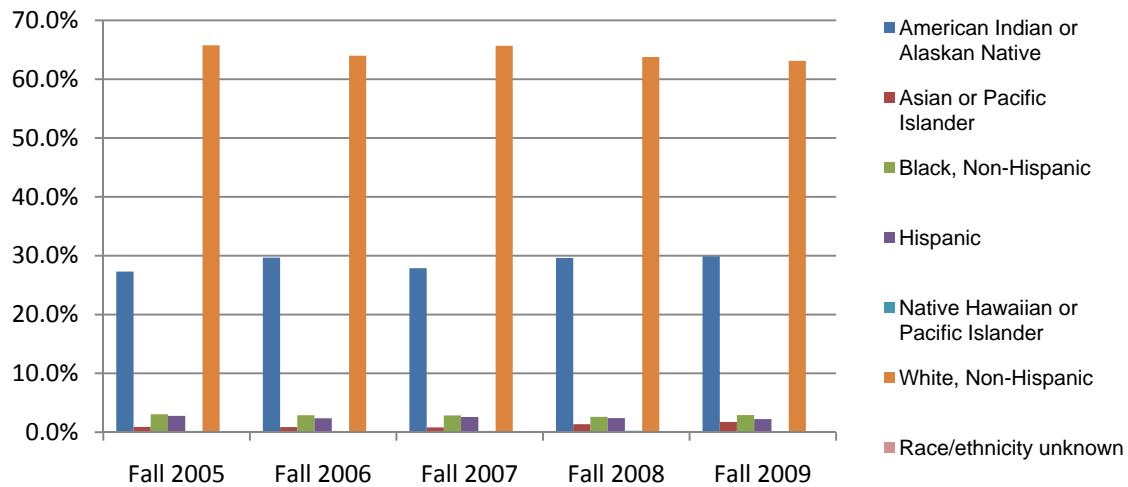
	Fall 2005	Fall 2006	Fall 2007	Fall 2008	Fall 2009
Adair	8	12	18	8	11
Alfalfa	0	0	1	0	0
Atoka	4	1	2	2	0
Beaver	0	0	0	0	0
Beckham	2	2	2	1	0
Blaine	1	2	1	1	1
Bryan	1	0	0	0	0
Caddo	0	0	2	2	1
Canadian	2	0	2	5	5
Carter	3	4	1	1	2
Cherokee	21	17	27	33	24
Choctaw	0	2	4	4	3
Cimarron	0	0	0	0	0
Cleveland	8	5	6	8	12
Coal	0	0	0	0	0
Comanche	2	2	3	4	6
Cotton	0	0	0	0	0
Craig	89	99	100	95	101
Creek	86	81	44	35	28
Custer	0	1	1	1	1
Delaware	53	61	58	51	55
Dewey	1	1	1	3	1
Ellis	0	0	0	0	0
Garfield	5	7	9	7	2
Garvin	0	0	0	0	0
Grady	3	4	3	2	3
Grant	0	0	0	1	0
Greer	0	1	0	0	0
Harmon	0	0	0	0	0
Harper	1	0	0	0	0
Haskell	2	2	0	0	0
Hughes	1	0	2	1	0
Jackson	0	2	2	3	4
Jefferson	0	0	0	0	0
Johnston	0	1	0	0	0
Kay	15	13	10	9	13
Kingfisher	0	0	2	2	4
Kiowa	0	0	1	1	5
Latimer	3	3	3	3	3

	Fall 2005	Fall 2006	Fall 2007	Fall 2008	Fall 2009
LeFlore	10	5	8	7	12
Lincoln	13	15	9	10	7
Logan	1	1	1	2	2
Love	0	0	0	1	1
McClain	1	0	0	0	2
McCurtain	1	3	4	4	5
McIntosh	1	5	4	1	4
Major	0	0	0	0	0
Marshall	0	0	0	0	1
Mayes	517	590	526	498	623
Murray	0	0	0	0	0
Muskogee	16	17	18	15	9
Noble	0	0	0	0	0
Nowata	97	83	90	94	97
Okfuskee	0	0	0	0	0
Oklahoma	22	33	22	34	28
Okmulgee	11	13	15	18	24
Osage	154	142	116	90	105
Ottawa	15	23	23	16	15
Pawnee	6	9	10	11	10
Payne	23	19	8	9	7
Pittsburg	3	2	2	2	1
Pontotoc	3	3	1	0	0
Pottawatomie	6	4	4	3	5
Pushmataha	1	0	1	1	0
Roger Mills	1	1	2	0	0
Rogers	1263	1334	1320	1375	1406
Seminole	2	1	1	2	3
Sequoyah	4	5	2	4	3
Stephens	2	1	3	1	2
Texas	1	1	1	0	0
Tillman	1	0	0	0	0
Tulsa	728	624	646	585	629
Wagoner	67	49	53	58	68
Washington	442	510	498	574	624
Washita	0	0	2	1	0
Woods	1	2	1	1	2
Woodward	0	0	3	2	2
Unknown	0	0	0	0	0
<b>Total</b>	<b>3724</b>	<b>3818</b>	<b>3699</b>	<b>3702</b>	<b>3982</b>

**Enrollment by City (Oklahoma): With Ten or More  
(Based on permanent mailing address.)**

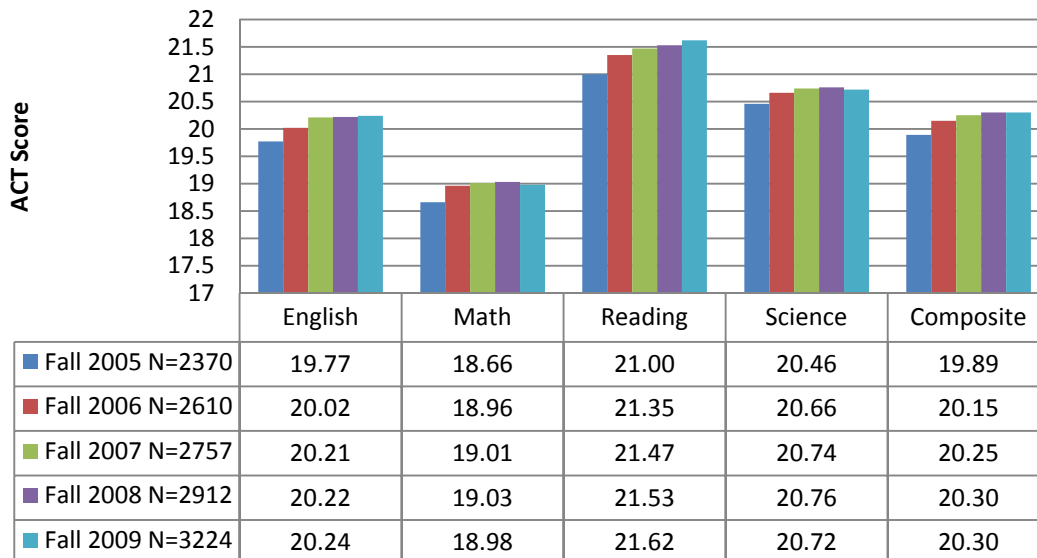
	Fall 2005	Fall 2006	Fall 2007	Fall 2008	Fall 2009
Claremore	971	980	992	1024	1030
Bartlesville	368	436	416	468	521
Pryor	268	309	271	256	312
Tulsa	369	273	251	244	256
Owasso	142	138	156	177	179
Inola	97	116	110	126	132
Broken Arrow	132	105	120	110	117
Collinsville	92	86	98	101	116
Chelsea	86	107	110	101	105
Oologah	62	90	65	79	80
Locust Grove	53	67	61	51	79
Vinita	65	63	73	56	75
Salina	64	68	56	66	70
Nowata	69	49	66	66	67
Dewey	47	58	48	62	61
Adair	40	42	41	48	60
Catoosa	74	64	62	46	59
Chouteau	41	59	61	41	51
Pawhuska	43	43	40	33	42
Talala	31	46	38	27	31
Skiatook	49	47	42	34	29
Big Cabin	22	25	23	23	27
Ochelata	19	17	20	26	20
Ramona	6	9	8	17	19
Sand Springs	19	14	17	16	18
Sapulpa	13	20	14	17	17
Rose	9	7	11	6	16
Barnsdall	19	22	21	15	15
Langley	9	9	8	9	14
Wagoner	12	8	6	8	14
Copan	17	16	18	13	13
Coweta	19	13	9	11	13
Wann	14	12	12	13	13
Afton	9	17	14	9	12
Spavinaw	15	12	8	13	12
Delaware	11	8	6	10	11
Oklahoma City	8	7	9	14	11
Okmulgee	1	1	3	2	10
Ponca City	11	10	10	5	10
South Coffeyville	8	8	6	4	10

### Enrollment by Race/Ethnicity



	Fall 2005	Fall 2006	Fall 2007	Fall 2008	Fall 2009
American Indian or Alaskan Native	1054	1173	1074	1142	1241
Asian or Pacific Islander	35	34	31	53	72
Black, Non-Hispanic	118	114	110	101	121
Hispanic	107	94	100	92	93
Native Hawaiian or Pacific Islander	8	8	8	9	5
Race/ethnicity unknown	0	0	0	1	0
White, Non-Hispanic	2539	2529	2532	2460	2622

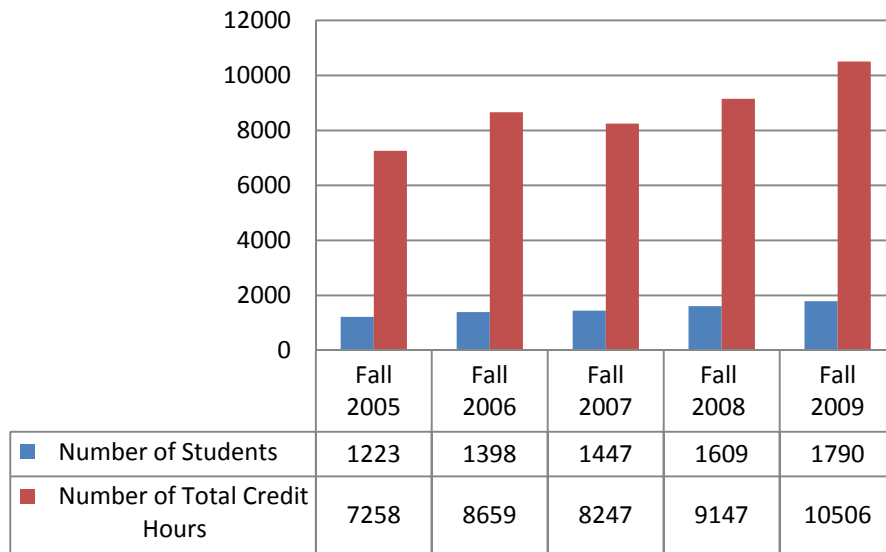
### Average ACT Score for All Enrolled Students Who Submitted Scores



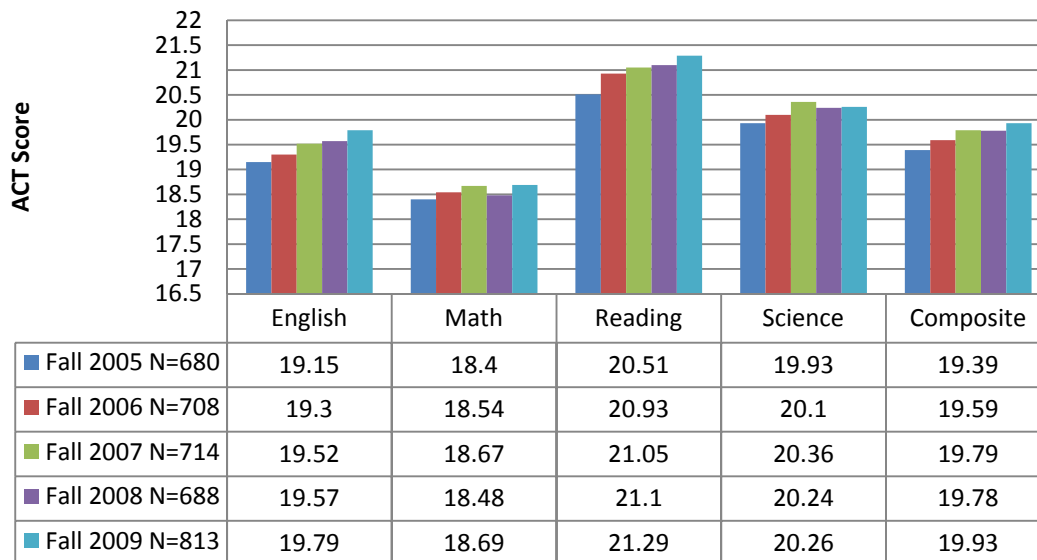
**Distribution of Student Enrollment by Credit Hours**

<b>N Hours</b>	<b>Fall 2005</b>	<b>Fall 2006</b>	<b>Fall 2007</b>	<b>Fall 2008</b>	<b>Fall 2009</b>
0.00	35	25	23	18	13
1.00	9	15	5	5	3
2.00	0	0	0	0	0
3.00	361	403	364	349	342
4.00	83	62	53	64	37
5.00	29	22	13	12	19
6.00	532	640	490	465	467
7.00	121	127	139	109	130
8.00	129	103	90	86	78
9.00	320	315	290	269	273
10.00	123	155	111	124	129
11.00	82	71	60	65	50
12.00	765	792	847	862	1036
13.00	488	510	552	566	672
14.00	277	237	230	241	239
15.00	308	294	343	360	357
16.00	120	115	173	166	200
17.00	25	34	33	41	47
18.00	51	27	36	51	58
19.00	2	3	3	4	4
20.00	1	2	0	0	0
21.00	0	0	0	1	0

### Online Enrollment



### First-time Freshmen Average ACT Scores





**First-time Freshmen by High School: With Ten or More**

<b>School</b>	<b>Fall 2005</b>	<b>Fall 2006</b>	<b>Fall 2007</b>	<b>Fall 2008</b>	<b>Fall 2009</b>
Claremore High School, Claremore, OK	78	64	81	83	89
Bartlesville High School, Bartlesville, OK	59	62	58	46	60
GED	103	87	33	48	60
Pryor High School, Pryor	29	37	42	31	41
Sequoyah High School, Claremore, OK	34	23	29	31	39
Owasso High School, Owasso, OK	36	27	35	32	34
Adair High School, Adair, OK	21	18	6	11	30
Inola High School, Inola, OK	22	27	26	29	27
Oologah High School, Oologah, OK	28	39	25	27	26
Verdigris High School, Claremore, OK	13	8	17	18	21
Locust Grove High School, Locust Grove, OK	14	13	14	9	20
Collinsville High School, Collinsville, OK	19	19	18	8	19
Home Schooled	9	17	13	19	18
Broken Arrow High School, Broken Arrow, OK	19	9	11	17	17
Nowata High School, Nowata, OK	21	10	16	12	17
Dewey High School, Dewey, OK	15	20	8	18	16
Vinita High School, Vinita, OK	11	8	19	8	16
Chelsea High School, Chelsea, OK	19	19	12	17	15
Catoosa High School, Catoosa, OK	15	18	16	6	14
Caney Valley High School, Ramona, OK	4	5	8	9	12
Chouteau High School, Chouteau, OK	9	18	13	6	12
Union High School, Tulsa, OK	6	6	8	6	11

**First-time Freshmen Enrollment by City (Oklahoma): With Ten or More**  
 (Based on permanent mailing address.)

City	Fall 2005	Fall 2006	Fall 2007	Fall 2008	Fall 2009
Claremore	201	169	185	193	215
Bartlesville	97	101	84	71	88
Pryor	52	65	42	45	64
Owasso	32	28	30	29	39
Tulsa	94	39	44	35	37
Collinsville	25	23	21	19	26
Inola	28	29	26	28	24
Broken Arrow	26	10	17	20	21
Chelsea	24	27	13	21	21
Nowata	19	10	16	10	21
Oologah	17	23	9	22	21
Vinita	14	11	25	11	18
Adair	13	15	6	10	16
Locust Grove	11	16	13	6	16
Catoosa	17	17	12	9	15
Dewey	7	14	4	13	11

**First-time Transfers by Last Institution Attended: With Five or More**

School	Fall 2005	Fall 2006	Fall 2007	Fall 2008	Fall 2009
Tulsa Community College, OK	135	111	124	100	84
Northeastern State University, OK	50	42	38	42	28
Oklahoma State University (Stillwater), OK	24	21	21	30	23
Coffeyville Community College, KS	11	10	20	7	14
Northern Oklahoma College, OK	12	14	16	10	11
Oklahoma State University/Okmulgee, OK	9	4	4	6	11
University Of Oklahoma, OK	8	7	6	12	10
Northeastern Oklahoma A&M College, OK	19	36	40	21	9
Oklahoma Wesleyan College, OK	3	8	11	3	8
North Greenville College, SC	0	0	1	1	7
University Of Central Oklahoma, OK	14	11	8	9	7
Connors State College, OK	8	10	10	4	6
Missouri Southern State College, MO	3	2	1	1	5
University Of Tulsa, OK	5	4	2	5	5

### Degrees Awarded

Degree	Major	2005-2006	2006-2007	2007-2008	2008-2009
<b>Associate in Arts</b>	Accounting	7	14	6	11
	Art	5	1	1	2
	Art-Graphic Design Option	0	0	0	1
	Art-Graphics Option	5	1	1	2
	Art-Art History Option	0	0	1	0
	Business Administration	41	34	30	27
	Criminal Justice Studies-Law/Justice Option	0	0	2	7
	Education-Elementary/Early Childhood Option	6	9	16	1
	Elementary Education	0	0	3	25
	Law/Justice Careers-Criminal Justice Option	4	3	2	1
	Legal Assisting	1	0	1	4
	Liberal Arts-General	8	6	14	15
	Liberal Arts-English Option	0	0	1	1
	Liberal Arts-Native American Studies Option	0	1	1	1
	Radio-Television	1	0	2	0
	Secondary Education	12	12	11	13
	Social Sciences-History Option	1	0	0	2
	Social Sciences-Psychology Option	11	8	10	8
	Social Sciences-Sociology Option	0	2	3	1
	<b>Subtotal Associate in Arts</b>		102	91	105
<b>Associate in Science</b>	Biological Science	0	0	3	4
	Biological Science-Biology Option	3	1	1	0
	Biological Science-PreMedical/Dental Option	0	1	0	0
	Computer Science	6	4	4	5
	Physical Science-Chemistry Option	1	0	4	1
	Physical Science-Engineering/Physics/Math Option	1	2	0	0
	Physical Science-Pre-Engineering/Physics Option	3	1	0	0
	Pre-Nursing	2	3	1	0
<b>Subtotal Associate in Science</b>		16	12	13	10
<b>Associate in Applied Science</b>	Applied Technology	6	3	10	8
	Applied Technology-Business, Information & Engineering Option	2	1	0	0

Degree	Major	2005-2006	2006-2007	2007-2008	2008-2009
	Applied Technology-Public & Health Services Option	0	0	1	0
	Applied Technology-Transportation Management Option	1	0	0	0
	Emergency Medical Services	5	15	14	10
	Legal Assistant	4	3	0	0
	Nursing	54	44	45	58
	Nursing-Bridge Paramedic/LPN to RN	9	5	6	3
	Police Science-Collegiate Officer Program Option	3	5	3	0
	Police Science-Law Enforcement Option	0	3	0	0
	<b>Subtotal Associate in Applied Science</b>	<b>84</b>	<b>79</b>	<b>79</b>	<b>79</b>
<b>Bachelor of Arts</b>	Communications-Communication Arts Option	0	0	0	1
	Communications-Corporate Communications Option	0	3	3	1
	Communications-Radio-Television Option	1	10	4	4
	Liberal Arts	16	8	16	5
	Liberal Arts-English Option	0	0	0	2
	Liberal Arts-Global Humanities Option	0	0	0	2
	<b>Subtotal Bachelor of Arts</b>	<b>17</b>	<b>21</b>	<b>23</b>	<b>15</b>
<b>Bachelor of Fine Art</b>	Visual Arts-Graphic Design Option	0	0	1	3
	Visual Arts-Studio Art Option	0	0	2	3
	<b>Subtotal Bachelor of Fine Art</b>	<b>0</b>	<b>0</b>	<b>3</b>	<b>6</b>
<b>Bachelor of Science</b>	Biology-Environmental Conservation Option	6	8	11	6
	Biology-Medical/Molecular Option	6	13	11	16
	Business Administration-Accounting Option	9	18	15	16
	Business Administration-Entrepreneurship Option	0	0	1	0
	Business Administration-Human Resources Management Option	2	2	9	5
	Business Administration-Management Option	34	23	25	26
	Business Administration-Marketing Option	0	0	1	11
	Business Information Technology-Computer Network Administration Option	7	1	3	6

<b>Degree</b>	<b>Major</b>	<b>2005-2006</b>	<b>2006-2007</b>	<b>2007-2008</b>	<b>2008-2009</b>
	Business Information Technology-Software Development & Multimedia Option	13	12	6	4
	Community Counseling	0	0	0	3
	Justice Administration	5	3	5	9
	Justice Administration-Law Enforcement Option	1	3	1	3
	Nursing	0	0	0	1
	Organizational Leadership-Business Studies Focus	0	0	0	2
	Organizational Leadership-Liberal Studies Focus	0	0	0	1
	Social Science-History & Political Science Option	3	3	6	4
	Social Science-Psychology Option	0	0	1	6
	Social Science-Psychology & Sociology Option	35	23	16	14
	Social Science-Sociology Option	0	0	0	2
	Sport Management	0	0	0	1
	<b>Subtotal Bachelor of Science</b>	121	109	111	136
<b>Bachelor of Technology</b>	Applied Technology	27	26	22	32
	<b>Subtotal Bachelor of Technology</b>	27	26	22	32
<b>Total Degrees Awarded</b>		367	338	356	400

## Faculty Profile

	Full-time Faculty					Part-time Faculty				
	Total	Members of Minority Groups	Female	Male	Doctorate or Terminal Degree	Total	Members of Minority Groups	Female	Male	Doctorate or Terminal Degree
<b>Fall 2007</b>	97	10	45	52	55	115	15	81	34	19
<b>Fall 2008</b>	98	10	44	54	61	124	15	82	42	16
<b>Fall 2009</b>	104	10	44	60	67	141	17	92	49	18

## Student to Faculty Ratio

	Student to Faculty Ratio	Based on Students	Based on Faculty
<b>Fall 2007</b>	20 to 1	2763	137
<b>Fall 2008</b>	20 to 1	2814	139
<b>Fall 2009</b>	21 to 1	3118	151

**Student to Faculty Ratio = ratio of full-time equivalent students (full-time plus 1/3 part time) to full-time equivalent instructional faculty (full time plus 1/3 part time).**

## Full-time Faculty by Rank

	Professor	Associate Professor	Assistant Professor	Instructor	Lecturer
Fall 2007	11	25	35	25	1
Fall 2008	11	24	36	26	1
Fall 2009	13	31	34	26	0

### Tuition and Fees

		Oklahoma Residents			Nonresidents		
		RSU Courses	RSU Online Courses	Adult Degree Completion	RSU Courses	RSU Online Courses	Adult Degree Completion
<b>2005-2006</b>	Tuition	\$76.00	\$76.00		\$228.00	\$228.00	
	Fees	\$34.00	\$70.25		\$34.00	\$70.25	
	Credit Hour	\$110.00	\$146.25		\$262.00	\$298.25	
<b>2006-2007</b>	Tuition	\$76.00	\$76.00		\$228.00	\$228.00	
	Fees	\$41.00	\$95.25		\$41.00	\$95.25	
	Credit Hour	\$117.00	\$171.25		\$269.00	\$323.25	
<b>2007-2008</b>	Tuition	\$82.75	\$82.75	\$137.50	\$248.25	\$248.25	\$337.50
	Fees	\$46.00	\$95.25		\$46.00	\$95.25	
	Credit Hour	\$128.75	\$178.00	\$146.00	\$294.25	\$343.50	
<b>2008-2009</b>	Tuition	\$90.95	\$90.95	\$157.25	\$272.85	\$272.85	\$372.50
	Fees	\$50.60	\$99.85		\$50.60	\$99.85	
	Credit Hour	\$141.55	\$190.80	\$157.25	\$323.45	\$372.70	\$372.50
<b>2009-2010</b>	Tuition	\$90.95	\$90.95	\$157.25	\$272.85	\$272.85	\$372.50
	Fees	\$50.60	\$99.85		\$50.60	\$99.85	
	Credit Hour	\$141.55	\$190.80	\$157.25	\$323.45	\$372.70	\$372.50

### Funding History E & G I

Year	State Allocation	Revolving (Tuition/Fees)	Beginning Reserves	Total Available	Budget	% of Total Available
<b>2005-2006</b>	\$12,452,785	\$8,844,187	\$4,200,604	\$25,497,576	\$22,952,164	90.0%
<b>2006-2007</b>	\$14,135,323	\$10,090,005	\$4,274,845	\$28,500,173	\$25,659,979	90.0%
<b>2007-2008</b>	\$14,809,571	\$10,377,143	\$5,176,209	\$30,362,923	\$28,282,512	93.1%
<b>2008-2009</b>	\$15,050,842	\$12,571,559	\$4,560,245	\$32,182,646	\$30,325,157	94.2%

### RSU Revenue History

Revenues	Financial Stmt. Actual 04/05	Financial Stmt. Actual 05/06	Financial Stmt. Actual 06/07	Financial Stmt. Actual 07/08
E & G 1	\$19,662,378	\$21,309,594	\$23,996,880	\$26,162,641
E & G 2	\$5,323,149	\$5,562,400	\$4,559,795	\$4,382,275
Auxiliary	\$2,346,339	\$2,934,970	\$3,805,826	\$4,568,013
Capital	\$1,189,616	\$1,176,829	\$2,264,881	\$2,899,618
<b>Total Revenue</b>	<b>\$28,521,482</b>	<b>\$30,983,793</b>	<b>\$34,627,382</b>	<b>\$38,012,547</b>

### E&G I Expenditures by Function

Function	Financial Stmt. Actual 04/05	Financial Stmt. Actual 05/06	Financial Stmt. Actual 06/07	Financial Stmt. Actual 07/08
Instruction	\$9,061,959	\$9,755,072	\$10,114,755	\$10,356,658
Research	\$0	\$0	\$0	\$0
Public Service	\$276,826	\$284,568	\$342,071	\$390,555
Academic Support	\$2,061,130	\$2,057,780	\$2,373,422	\$2,854,039
Student Svcs	\$1,526,105	\$1,806,094	\$2,209,495	\$2,796,111
Institut. Support	\$2,538,666	\$2,511,196	\$2,722,491	\$3,030,682
Physical Plant	\$2,250,369	\$2,279,509	\$3,876,736	\$2,724,870
Scholarship	\$992,682	\$1,109,229	\$1,471,873	\$1,814,552
<b>Total</b>	<b>\$18,707,737</b>	<b>\$19,803,448</b>	<b>\$23,110,843</b>	<b>\$23,967,467</b>

### Percent of Expenditures by Function

Function	Financial Stmt. Actual 04/05	Financial Stmt. Actual 05/06	Financial Stmt. Actual 06/07	Financial Stmt. Actual 07/08
Instruction	48%	49%	44%	43%
Research	0%	0%	0%	0%
Public Service	1%	1%	1%	2%
Academic Support	11%	10%	10%	12%
Student Svcs	8%	9%	10%	12%
Institut. Support	14%	13%	12%	13%
Physical Plant	12%	12%	17%	11%
Scholarship	5%	6%	6%	8%
<b>Total</b>	<b>100%</b>	<b>100%</b>	<b>100%</b>	<b>100%</b>

### E & G I Expenditures by Object Category

Object Code	2004-2005	2005-2006	2006-2007	2007-2008
11000 Faculty Salaries	\$5,239,576	\$5,701,884	\$6,126,420	\$6,654,962
12000 Professional Sal.	\$3,342,454	\$3,413,391	\$3,989,716	\$4,500,751
13000 Other Salaries	\$2,241,176	\$2,409,438	\$2,583,999	\$2,937,407
14000 Benefits	\$3,681,266	\$3,968,699	\$4,418,797	\$5,210,206
15000 Professional Svcs.	\$915,944	\$837,504	\$330,938	\$129,369
20000 Travel	\$93,370	\$119,897	\$142,750	\$229,741
30000 Supplies	\$1,350,633	\$1,476,844	\$1,342,254	\$1,779,438
40000 Capital	\$0	\$158,604	\$1,916,740	\$0
42000 Library Capital	\$298,281	\$159,699	\$299,374	\$188,159
31300 Utilities	\$552,355	\$448,259	\$487,982	\$522,882
50000 Scholarships	\$992,682	\$1,109,229	\$1,471,873	\$1,814,552
60000 Transfers	\$0	\$0	\$0	\$0
<b>Total</b>	<b>\$18,707,737</b>	<b>\$19,803,448</b>	<b>\$23,110,843</b>	<b>\$23,967,467</b>



### Percent of Budget Expenditures by Object

Object Code	2004-2005	2005-2006	2006-2007	2007-2008
11000 Faculty Salaries	28%	29%	27%	28%
12000 Professional Sal.	18%	17%	17%	19%
13000 Other Salaries	12%	12%	11%	12%
14000 Benefits	20%	20%	19%	22%
15000 Professional Svcs.	5%	4%	1%	1%
20000 Travel	0%	1%	1%	1%
30000 Supplies	7%	7%	6%	7%
40000 Capital	0%	1%	8%	0%
42000 Library Capital	2%	1%	1%	1%
31300 Utilities	3%	2%	2%	2%
50000 Scholarships	5%	6%	6%	8%
60000 Transfers	0%	0%	0%	0%
Total	100%	100%	100%	100%

### Statements of Cash Flows for the Years Ended June 30

(in millions)

Source: RSU annual audits

	2004	2005	2006	2007	2008	2009
Net cash used by operating activities	(\$10,491)	(\$8,835)	(\$9,858)	(\$16,678)	(\$14,832)	(\$17,863)
Net Cash Provided by Noncapital financing activities	\$11,261	\$11,441	\$12,457	\$18,609	\$19,839	\$21,085
Interest income received	\$22	\$53	\$89	\$135	\$575	\$664
Net cash used by capital & related financing activities	(\$2,544)	(\$1,899)	(\$2,558)	(\$1,494)	\$1,506	(\$7,324)
Net increase in cash & equivalents	(\$1,752)	\$760	\$130	\$572	\$7,088	(\$3,438)
Cash & cash equivalents, beginning of year	\$10,146	\$8,394	\$9,154	\$9,284	\$9,856	\$16,944
Cash & cash equivalents, end of year	\$8,394	\$9,154	\$9,284	\$9,856	\$16,944	\$13,506

**Summary of Total Assets, Liabilities, and  
Net Assets for the Years Ended June 30**  
(in millions)

	<b>2004</b>	<b>2005</b>	<b>2006</b>	<b>2007</b>	<b>2008</b>	<b>2009</b>
<b>Total Assets</b>	\$25,980	\$28,125	\$48,595	\$50,173	\$65,192	\$65,072
<b>Total Liabilities</b>	\$6,068	\$6,620	\$24,948	\$24,644	\$35,578	\$33,380
<b>Total Net Assets</b>	\$19,912	\$21,505	\$23,647	\$25,529	\$29,614	\$31,692

**Holdings of Stratton Taylor Library by Volume Type**

<b>Volume Type</b>	<b>Jul-08</b>	<b>Jul-09</b>
<b>Print books</b>	77,120	77,650
<b>Videos</b>	4,992	4,689
<b>Compact Discs</b>	1,343	1,376
<b>DVD's</b>	491	562
<b>Microfiche</b>	148,806	153,484
<b>Microfilm</b>	628	636

**Summary of Stratton Taylor Library Purchases**

<b>Fiscal Year</b>	<b>N Purchased</b>	<b>Expenditures</b>
<b>2006</b>	3,496	\$299,033
<b>2007</b>	2,702	\$283,941
<b>2008</b>	3,106	\$253,600
<b>2009</b>	2,801	\$299,008

## Student Clubs and Organizations

- Alpha Sigma Alpha Sorority (ASA)
- Alpha Sigma Tau Sorority (AST)
- Baptist Collegiate Ministry (BCM)
- Biology Club
- Campus Crusade for Christ (CRU)
- Civitan Club (Bartlesville Campus)
- College Republicans
- Criminal Justice Society
- Emergency Medical Student Services (EMSSA)
- Native American Student Association (NASA)
- Objectivist Club
- Oklahoma Intercollegiate Legislature (O.I.L.)
- Pi Kappa Alpha Fraternity (PIKE)
- President's Leadership Class (PLC)
- Psi Chi (National Honor Society in Psychology)
- Psychology Club
- Rogers State Gaming Association
- RSU Accounting Society
- RSU Community Counseling
- Sigma Tau Gamma (STG) (Provisional Chapter)
- S.P.Q.R. (Paintball)
- Spanish Club
- Student Art Association
- Student Broadcasting Association (SBA)
- Student Government Association (SGA)
- Student Newspaper Organization (SNO)
- Student Theater Association (STO)
- Students in Free Enterprise (SIFE)
- Student Nursing Association (SNA)
- VOICE

## Athletics

- Basketball—Men and Women
- Baseball—Men
- Golf—Men and Women
- Soccer—Men and Women
- Softball—Women
- Cheerleading
- Rodeo