

# **ENTRY-LEVEL ASSESSMENT FALL 2013 Cohort Tracked Through Fall 2015**

---

**ROGERS STATE UNIVERSITY**  
Claremore, Oklahoma

---

Prepared by:

**The Office of Accountability and Academics  
2015 Reporting Period**





## **Entry-Level Assessment Report Fall 2013 First-time Freshman Cohort Tracked Through Fall 2015**

### **Executive Summary**

Rogers State University (RSU) analyzes college preparedness of all new students – first-time freshmen as well as transfer students. Students' scores on the American College Test (ACT) are the primary indicator of academic readiness. Transfer students are evaluated using both ACT scores and prior coursework. Students with low ACT sub-scores or no prior coursework receive secondary testing using the ACT COMPASS. Based on their performance, students identified as at-risk in one or more basic skills areas are enrolled in appropriate developmental studies courses to prepare them for success in college level course work.

Developmental coursework may be required when a first-time freshman has the following score on a subtest of the ACT:

ACT in English below 19  
ACT in math below 19  
ACT in reading below 19  
ACT in science below 19

Students who do not score at or above 19 on each ACT subtest are referred for secondary testing. The ACT COMPASS is the secondary test for English, reading and mathematics, and the Stanford Test of Academic Skills – Science (STASS) is the secondary test for science. With the exception of the STASS test, students who do not pass secondary testing on the first attempt may retake the test one time after a one-week waiting period. Developmental courses must be completed within the first 24 semester hours attempted for first-time freshmen (12 semester hours for transfer students); otherwise, future enrollments by the student will be limited to only the required zero-level courses until successful completion. A grade of "C" or higher is required to clear a developmental course requirement. *Table 1: Curricular Proficiency Model* provides a visual representation of the entry-level assessment plan at Rogers State University.

The University assesses developmental education success rates for first-time freshman cohorts by tracking progress in remedial education from semester of entry through seven consecutive semesters. (A comprehensive assessment of student learning outcomes is reported in the [Annual Student Assessment Report](#).) This analysis reports developmental education for entering fall 2013 freshmen through fall 2015.

During fall 2013, 688 academically deficient students accounted for 983 enrollments in courses as follows: Basic Writing (N = 221), Reading I (N = 120), Science Proficiency (N = 40), and Elementary Algebra or Intermediate Algebra (N = 602). Results show that for the fall 2013 cohort, 35% of Basic Writing students successfully completed the course with a C or better. Further, 55% of Reading students, 43% of Beginning Algebra students, 64% of Intermediate Algebra students, and 68% of Science Proficiency students successfully completed their developmental courses with a C or better. In general, these success rates have remained relatively stable over the previous two cohorts with minor fluctuations.

In comparing success rates in MATH 1513 – College Algebra, students whose ACT MATH sub-scores qualified them to enroll directly into college-level math had the highest success rate with a C or better (71%). This surpasses the national average of approximately 50%. Students, who placed in Beginning Algebra and successfully completed it before enrolling in and complete College Algebra, did so with similar success as the national average (50%). Similarly, students who placed in Intermediate Algebra and completed it successfully before enrolling in and completing College Algebra succeeded above the national average (61%).

Student success rates for ENGL 0003 - Basic Writing were stable at 39% of students earning an A, B, or C. This is notably below the national average for remedial writing; approximately two-thirds of students nationally successfully complete this course. Students whose ACT scores qualified them to enroll directly into Composition I demonstrated the highest success rate (72%), with students who completed Basic Writing evidencing the second highest success rate in Composition I (67%). These data suggest that the Basic Writing course is rigorous, with the highest achieving students completing the course and enrolling in Composition I with stronger skills than those who waived Basic Writing through the Compass or transferred in other test results.

These results held true for student performance in Composition II. Students whose ACT scores qualified them to enroll directly into Composition II had the highest success rate (89%). Students who completed Basic Writing tied for the second highest success rate (79%) with students whose deficiencies were cleared by some other means such as transfer of remedial course work.

In order to assess student success as a result of successful completion of developmental Reading, POLS 1113 – American Federal Government, HIST 2483 – American History to 1877, and HIST 2493 – American History Since 1877 were selected. Students whose ACT scores were sufficient for college level work achieved the highest success rates for all three courses. Students who placed in Reading achieved the lowest success rates for two of these three courses, scoring slightly higher than students who waived Reading with scores on the Compass for American History Since 1877. These results suggest that one semester of remedial Reading does not wholly remediate students. Prior institutional research has demonstrated that developmental Reading generally improves students' reading scores by one full grade level. Consequently, most students who place in Reading will continue to benefit from additional reading and writing services after completion of remedial course work.

Historically, Science Proficiency has been assessed using student success rates in BIOL 1114 – General Biology and BIOL 1144 – General Cellular Biology. At the request of the Dean of the School of Math, Science, and Health Sciences, GEOL 1014 – Earth Science and PHYS 1014 – General Physical Science were added for analysis beginning with the 2014 reporting year. Enrollment in each of these courses for students who enrolled in BIOL 0123 – Science Proficiency was low, with two or fewer remediated students enrolling for each course. Consequently, additional years should be monitored before drawing conclusions about remediated student success in these courses.

## **Interpreting Tables 2 through 6**

Success rates in math, English, reading and science are presented in Tables 2, 3, 4 and 5, respectively. To clarify, *Table 2: Success Rates of Math Deficient Students* reports results of successful or unsuccessful academic performance by student headcount in MATH 0114 - Elementary Algebra and MATH 0213 - Intermediate Algebra. Student achievement for each cohort is tracked over a two-year period, comparing results from the two preceding cohorts, in order to examine student performance beginning with developmental course work through corresponding general education core course work. For comparison, academic performance is reported for students placed directly into MATH 1513 or MATH 1503 based on the ACT, COMPASS and other method (transfer course, etc.).

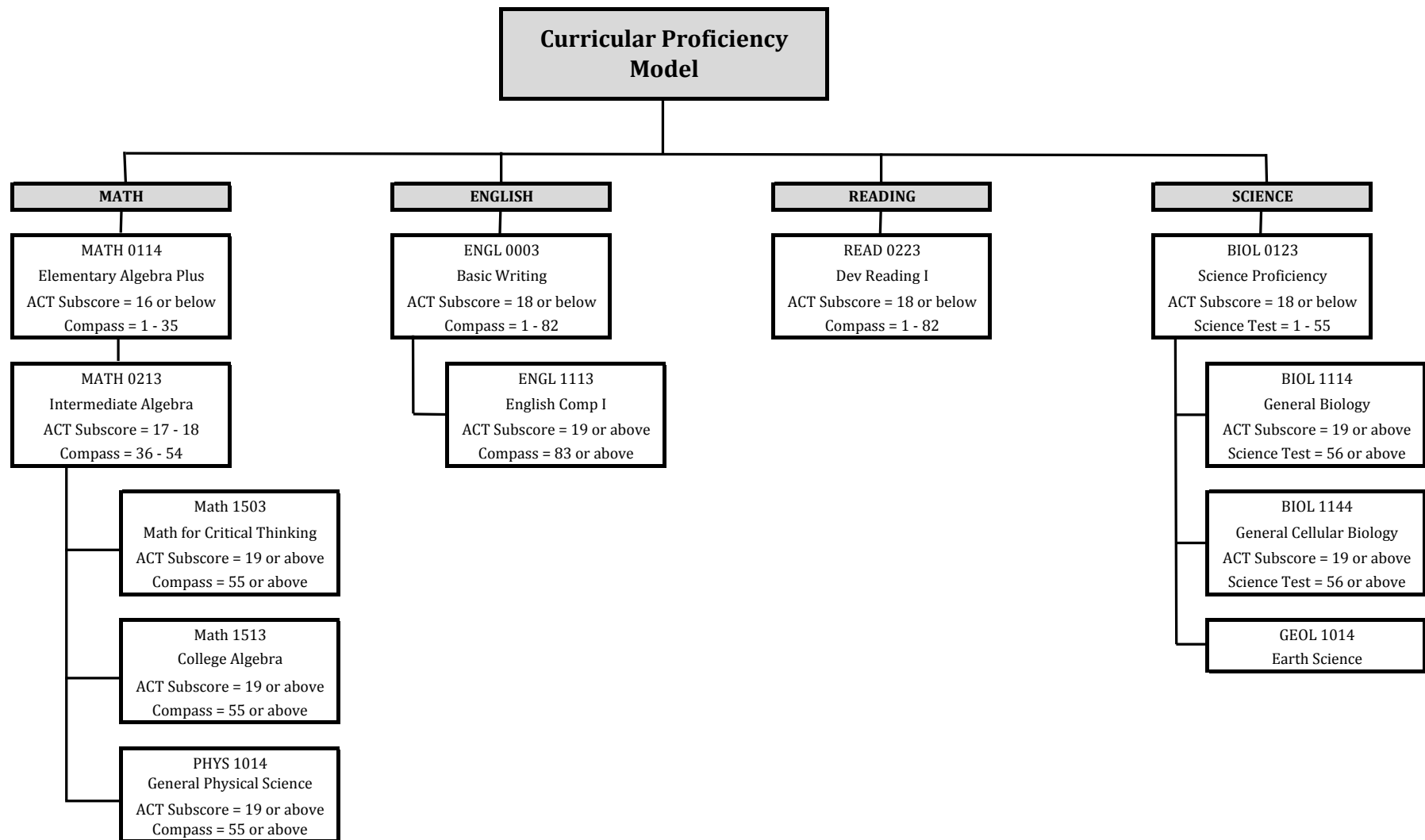
The vertical columns in each box of Tables 2, 3, 4 and 5 represent percentages of successful (earned a C or better) and unsuccessful (earned a D, F, incomplete, or withdrew from the course) student performance. The three columns represent the first-time freshmen cohorts from fall 2011 (left column), 2012 (center column) and 2013 (right column). The headcount (number) of students appears in the parentheses at the bottom of the column. Withdrawal percentages (W) are also reported separately for planning purposes.

*Table 6: Success Rates in Detail* augment Tables 2-5 by providing detailed information about the six most recently tracked cohorts who enrolled in the specified courses for the fall semesters of 2008-2013. For example, 379 students enrolled in MATH 0114 during the fall 2013 semester. Of the 379 students, 159 (42%) earned the grade of A, B or C, which are consider “successful”. Unsuccessful performance, as defined as D, F, W or I, was earned by 220 students (58%). Of the successful cohort of 159 students, 73 enrolled in MATH 0213 for the spring 2014 semester. Sixty-two percent (62%) of these students were successful in MATH 0213. Of the 45 students remaining in the successful cohort group, 36 students subsequently enrolled in MATH 1513 College Algebra and 18 (50%) successfully completed College Algebra. In summary, 18 students out of the original cohort of 379 students placing in remedial math (5%) successfully completed College Algebra during this time period. These results indicate that College Algebra is a gateway course for developmental students that requires additional institutional focus.

Additional graphs follow Table 6 that are included to graphically illustrate student success for RSU’s developmental student cohort.

- Figure 1: First-time Freshmen Mean ACT Scores for Fall 2009 through Fall 2013 Cohorts
- Figure 2: Composite Fall 2013 First-time Freshmen Remediation Rates
- Figure 3: Fall 2013 First-time Freshmen Areas of Deficiency
- Figure 4: Fall 2013 First-time Freshmen Success Rates by Developmental Area
- Figure 5: Fall 2013 First-time Freshmen Student Success Rates in Mathematics Disaggregated by College Readiness
- Figure 6: Fall 2013 First-time Freshmen Student Success Rates in English Disaggregated by College Readiness
- Figure 7: Fall 2013 First-time Freshmen Student Success Rates in Reading Disaggregated by College Readiness
- Figure 8: Fall 2013 First-time Freshmen Student Success Rates in Science Disaggregated by College Readiness

Table 1: Curricular Proficiency Model



- Proficiency established within 24 credit hours or 12 credit hours if transfer.
- Intermediate Algebra is prerequisite for Math 1503, Math 1513, or PHYS 1014.

Table 2: Success Rates of Math Students by Entry-Level Placement

MATH

Success Rates for Math Students by Entry-Level Placement: Fall 2011, Fall 2012, and Fall 2013 First-time Freshman Cohorts

(Data includes course results for seven consecutive semesters)

MATH 0114

	F2011	F2012	F2013
ABC	43%	43%	42%
DFIW	57%	57%	58%
W	14%	15%	13%
(#)	(392)	(359)	(379)

MATH 0213

	F2011	F2012	F2013
ABC	53%	54%	57%
DFIW	47%	46%	43%
W	13%	15%	14%
(#)	(345)	(289)	(237)

Compass Score  
Waived 0-Level

MATH 1503\*

	F2011	F2012	F2013
ABC	0%	100%	0%
DFIW	0%	0%	0%
W	0%	0%	0%
(#)	(0)	(2)	(0)

MATH 1513\*

	F2011	F2012	F2013
ABC	73%	46%	57%
DFIW	27%	%	43%
W	0%	15%	0%
(#)	(11)	(13)	(7)

ACT SubScore  
Waived 0-Level

MATH 1503\*

	F2011	F2012	F2013
ABC	33%	65%	14%
DFIW	67%	35%	86%
W	28%	24%	71%
(#)	(18)	(17)	(7)

MATH 1513

	F2011	F2012	F2013
ABC	71%	61%	71%
DFIW	29%	39%	29%
W	9%	14%	13%
(#)	(427)	(429)	(331)

Cleared by Other--  
Transfer, Previous  
0-Level, etc.

MATH 1503\*

	F2011	F2012	F2013
ABC	32%	32%	25%
DFIW	68%	68%	75%
W	23%	27%	25%
(#)	(31)	(22)	(16)

MATH 1513

	F2011	F2012	F2013
ABC	55%	47%	46%
DFIW	45%	53%	54%
W	20%	28%	23%
(#)	(185)	(199)	(137)

MATH 0213

	F2011	F2012	F2013
ABC	70%	64%	63%
DFIW	19%	365	27%
W	11%	15%	10%
(#)	(129)	(117)	(103)

MATH 1503\*

	F2011	F2012	F2013
ABC	0%	0%	0%
DFIW	0%	100%	0%
W	0%	100%	0%
(#)	(0)	(1)	(0)

MATH 1513

	F2011	F2012	F2013
ABC	58%	53%	50%
DFIW	42%	47%	50%
W	17%	24%	33%
(#)	(59)	(58)	(36)

\* Low Bases

ABC = % Successful

DFIW = % Unsuccessful

W = % Withdrew Only

(#) = Headcount

Table 3: Success Rates of English Students by Entry-Level Placement

## ENGLISH

### Success Rates for English Students by Entry-Level Placement: Fall 2011, Fall 2012, and Fall 2013 First-time Freshman Cohorts

(Data includes course results for seven consecutive semesters)

ENGL 0003																			
	F2011	F2012	F2013																
ABC	29%	35%	39%																
DFIW	71%	65%	61%																
W	15%	15%	15%																
(#)	(274)	(260)	(257)																
ENGL 1113				ENGL 1113				ENGL 1113				ENGL 1113				ENGL 1113			
	F2011	F2012	F2013		F2011	F2012	F2013		F2011	F2012	F2013		F2011	F2012	F2013		F2011	F2012	F2013
ABC	72%	67%	67%	ABC	62%	54%	59%	ABC	75%	69%	72%	ABC	62%	52%	60%	ABC	62%	52%	60%
DFIW	28%	33%	33%	DFIW	38%	46%	41%	DFIW	25%	31%	28%	DFIW	38%	48%	40%	DFIW	38%	48%	40%
W	6%	9%	13%	W	12%	13%	14%	W	8%	9%	9%	W	12%	14%	20%	W	12%	14%	20%
(#)	(69)	(69)	(55)	(#)	(99)	(71)	(73)	(#)	(617)	(578)	(513)	(#)	(66)	(66)	(45)	(#)	(66)	(66)	(45)
ENGL 1213				ENGL 1213				ENGL 1213				ENGL 1213				ENGL 1213			
	F2011	F2012	F2013		F2011	F2012	F2013		F2011	F2012	F2013		F2011	F2012	F2013		F2011	F2012	F2013
ABC	85%	63%	79%	ABC	73%	77%	69%	ABC	83%	81%	89%	ABC	77%	50%	79%	ABC	77%	50%	79%
DFIW	15%	37%	21%	DFIW	27%	23%	31%	DFIW	17%	19%	11%	DFIW	23%	50%	21%	DFIW	23%	50%	21%
W	10%	17%	10%	W	10%	10%	10%	W	4%	6%	5%	W	15%	21%	4%	W	15%	21%	4%
(#)	(40)	(30)	(29)	(#)	(51)	(31)	(39)	(#)	(382)	(347)	(323)	(#)	(26)	(28)	(24)	(#)	(26)	(28)	(24)

ABC = % Successful

DFIW = % Unsuccessful

W = % Withdrew Only

(#) = Headcount



Table 4: Success Rates of Reading Students by Entry-Level Placement

## READING

### Success Rates for Reading Students Compared by Entry-Level Placement: Fall 2011, Fall 2012, and Fall 2013 First-time Freshman Cohorts

(Data includes course results for seven consecutive semesters)

READ 0223															
	F2011	F2012	F2013												
ABC	67%	55%	52%												
DFIW	33%	45%	48%												
W	14%	12%	15%												
(#)	(97)	(120)	(98)												

Table 5: Success Rates of Science Students by Entry-Level Placement

**SCIENCE****Success Rates for Science Students Compared by Entry-Level Placement: Fall 2011, Fall 2012, and Fall 2013 First-time Freshman Cohorts**

(Data includes course results for seven consecutive semesters)

BIOL 0123															
	F2011	F2012	F2013												
ABC	74%	68%	46%												
DFIW	26%	32%	54%												
W	2%	18%	23%												
(#)	(46)	(50)	(35)												

Table 6: Success Rates in Detail

Math	Fall 2008			Fall 2009			Fall 2010			Fall 2011			Fall 2012			Fall 2013		
	actual	percentage		actual	percentage		actual	percentage		actual	percentage		actual	percentage		actual	percentage	
<b>Total Enrolled in Math 0114</b>	291	100.00%		340	100.00%		331	100.00%		392	100.00%		359	100.00%		379	100.00%	
A, B, or C	153	52.58%		204	60.00%		176	53.17%		169	43.11%		155	43.18%		159	41.95%	
D or F	88	30.24%		81	23.82%		103	31.12%		169	43.11%		148	41.23%		169	44.59%	
I	0	0.00%		0	0.00%		0	0.00%		0	0.00%		1	0.28%		0	0.00%	
W	50	17.18%		55	16.18%		52	15.71%		54	13.78%		55	15.32%		51	13.46%	
<b>Continued Immediately with Math 0213 (completed Math 0114 with A, B, or C)</b>	103	100.00%		147	100.00%		125	100.00%		129	100.00%		117	100.00%		73	100.00%	
A, B, or C	65	63.11%		100	68.03%		81	64.80%		90	69.77%		75	64.10%		45	61.64%	
D or F	28	27.18%		25	17.01%		27	21.60%		25	19.38%		25	21.37%		17	23.29%	
I	0	0.00%		0	0.00%		0	0.00%		0	0.00%		0	0.00%		0	0.00%	
W	10	9.71%		22	14.97%		17	13.60%		14	10.85%		17	14.53%		11	15.07%	
<b>Continued Immediately with: (completed Math 0213 with A, B, or C)</b>																		
Math 1503	1	100.00%		1	100.00%		1	100.00%		0	0.00%		1	100.00%		0	100.00%	
A, B, or C	1	100.00%		0	0.00%		1	100.00%		0	0.00%		0	0.00%		0	0.00%	
D or F	0	0.00%		0	0.00%		0	0.00%		0	0.00%		0	0.00%		0	0.00%	
I	0	0.00%		1	100.00%		0	0.00%		0	0.00%		0	0.00%		0	0.00%	
W	0	0.00%		0	0.00%		0	0.00%		0	0.00%		1	100.00%		0	100.00%	
Math 1513	42	100.00%		75	100.00%		59	100.00%		59	100.00%		58	100.00%		36	100.00%	
A, B, or C	28	66.67%		53	70.67%		45	76.27%		34	57.63%		31	53.45%		18	50.00%	
D or F	4	9.52%		14	18.67%		8	13.56%		15	25.42%		13	22.41%		5	13.89%	
I	0	0.00%		0	0.00%		0	0.00%		0	0.00%		0	0.00%		1	2.78%	
W	10	23.81%		8	10.67%		6	10.17%		10	16.95%		14	24.14%		12	33.33%	
PHYS 1014													1	100.00%		0	#DIV/0!	
A, B, or C													1	100.00%		0	#DIV/0!	
D or F													0	0.00%		0	#DIV/0!	
I													0	0.00%		0	#DIV/0!	
W													0	0.00%		0	#DIV/0!	

	Fall 2008			Fall 2009			Fall 2010			Fall 2011			Fall 2012			Fall 2013	
	actual	percentage		actual	percentage		actual	percentage		actual	percentage		actual	percentage		actual	percentage
<b>Total Enrolled in Math 0213 (tested out of Math 0114)</b>	278	100.00%		290	100.00%		337	100.00%		345	100.00%		289	100.00%		237	100.00%
A, B, or C	169	60.79%		185	63.79%		188	55.79%		184	53.33%		157	54.33%		134	56.54%
D or F	64	23.02%		62	21.38%		98	29.08%		117	33.91%		88	30.45%		69	29.11%
I	0	0.00%		0	0.00%		0	0.00%		0	0.00%		0	0.00%		0	0.00%
W	45	16.19%		43	14.83%		51	15.13%		44	12.75%		44	15.22%		34	14.35%
<b>Continued Immediately with: (completed Math 0213 with A, B, or C)</b>																	
Math 1503	3	100.00%		6	100.00%		7	100.00%		3	100.00%		4	100.00%		7	100.00%
A, B, or C	1	33.33%		3	50.00%		1	14.29%		1	33.33%		4	100.00%		3	42.86%
D or F	0	0.00%		1	16.67%		2	28.57%		1	33.33%		0	0.00%		3	42.86%
I	0	0.00%		0	0.00%		0	0.00%		0	0.00%		0	0.00%		0	0.00%
W	2	66.67%		2	33.33%		4	57.14%		1	33.33%		0	0.00%		1	14.29%
Math 1513	119	100.00%		125	100.00%		138	100.00%		133	100.00%		106	100.00%		96	100.00%
A, B, or C	73	61.34%		67	53.60%		82	59.42%		80	60.15%		52	49.06%		59	61.46%
D or F	29	24.37%		33	26.40%		30	21.74%		26	19.55%		32	30.19%		20	20.83%
I	0	0.00%		0	0.00%		0	0.00%		0	0.00%		0	0.00%		0	0.00%
W	17	14.29%		25	20.00%		26	18.84%		27	20.30%		22	20.75%		17	17.71%
PHYS 1014													3	100.00%		0	#DIV/0!
A, B, or C													3	100.00%		0	#DIV/0!
D or F													0	0.00%		0	#DIV/0!
I													0	0.00%		0	#DIV/0!
W													0	0.00%		0	#DIV/0!

<b>Enrolled in: (Scored high enough on Compass to waive zero-level)</b>																	
Math 1503	0	0.00%		1	100.00%		1	100.00%		0	0.00%		2	100.00%		0	0.00%
A, B, or C	0	0.00%		1	100.00%		1	100.00%		0	0.00%		2	100.00%		0	0.00%
D or F	0	0.00%		0	0.00%		0	0.00%		0	0.00%		0	0.00%		0	0.00%
I	0	0.00%		0	0.00%		0	0.00%		0	0.00%		0	0.00%		0	0.00%
W	0	0.00%		0	0.00%		0	0.00%		0	0.00%		0	0.00%		0	0.00%
Math 1513	8	100.00%		9	100.00%		5	100.00%		11	100.00%		13	100.00%		7	100.00%
A, B, or C	5	62.50%		6	66.67%		1	20.00%		8	72.73%		6	46.15%		4	57.14%
D or F	1	12.50%		2	22.22%		3	60.00%		3	27.27%		5	38.46%		3	42.86%
I	0	0.00%		0	0.00%		0	0.00%		0	0.00%		0	0.00%		0	0.00%
W	2	25.00%		1	11.11%		1	20.00%		0	0.00%		2	15.38%		0	0.00%
PHYS 1014													1	100.00%		6	100.00%
A, B, or C													1	100.00%		6	100.00%
D or F													0	0.00%		0	0.00%
I													0	0.00%		0	0.00%
W													0	0.00%		0	0.00%

	Fall 2008			Fall 2009			Fall 2010			Fall 2011			Fall 2012			Fall 2013	
	actual	percentage		actual	percentage		actual	percentage		actual	percentage		actual	percentage		actual	percentage
<b>Enrolled in: (Scored high enough on ACT to waive zero-level)</b>																	
Math 1503	15	100.00%		6	100.00%		12	100.00%		18	100.00%		17	100.00%		7	100.00%
A, B, or C	10	66.67%		3	50.00%		4	33.33%		6	33.33%		11	64.71%		1	14.29%
D or F	4	26.67%		1	16.67%		3	25.00%		7	38.89%		2	11.76%		1	14.29%
I	0	0.00%		0	0.00%		0	0.00%		0	0.00%		0	0.00%		0	0.00%
W	1	6.67%		2	33.33%		4	33.33%		5	27.78%		4	23.53%		5	71.43%
N	0	0.00%		0	0.00%		1	8.33%		0	0.00%		0	0.00%		0	0.00%
Math 1513	312	100.00%		328	100.00%		394	100.00%		427	100.00%		429	100.00%		331	100.00%
A, B, or C	219	70.19%		223	67.99%		271	68.78%		304	71.19%		260	60.61%		235	71.00%
D or F	56	17.95%		58	17.68%		81	20.56%		84	19.67%		110	25.64%		53	16.01%
I	0	0.00%		0	0.00%		0	0.00%		0	0.00%		0	0.00%		0	0.00%
W	37	11.86%		47	14.33%		41	10.41%		37	8.67%		58	13.52%		43	12.99%
N	0	0.00%		0	0.00%		1	0.25%		2	0.47%		1	0.23%		0	0.00%
PHYS 1014													25	100.00%		56	100.00%
A, B, or C													25	100.00%		50	89.29%
D or F													0	0.00%		5	8.93%
I													0	0.00%		0	0.00%
N													0	0.00%		0	0.00%
W													0	0.00%		1	1.79%

<b>Enrolled in: (Remedial cleared by other ways--transfer, previous zero-level,etc.)</b>																	
Math 1503	26	100.00%		27	100.00%		17	100.00%		31	100.00%		22	100.00%		16	100.00%
A, B, or C	5	19.23%		11	40.74%		9	52.94%		10	32.26%		7	31.82%		4	25.00%
D or F	6	23.08%		1	3.70%		3	17.65%		14	45.16%		9	40.91%		8	50.00%
I	0	0.00%		0	0.00%		0	0.00%		0	0.00%		0	0.00%		0	0.00%
W	15	57.69%		15	55.56%		5	29.41%		7	22.58%		6	27.27%		4	25.00%
Math 1513	153	100.00%		166	100.00%		191	100.00%		185	100.00%		199	100.00%		137	100.00%
A, B, or C	85	55.56%		90	54.22%		115	60.21%		101	54.59%		94	47.24%		63	45.99%
D or F	40	26.14%		31	18.67%		33	17.28%		47	25.41%		49	24.62%		42	30.66%
I	0	0.00%		0	0.00%		0	0.00%		0	0.00%		0	0.00%		0	0.00%
W	28	18.30%		45	27.11%		43	22.51%		37	20.00%		56	28.14%		32	23.36%
AU	0	0.00%		0	0.00%		0	0.00%		0	0.00%		0	0.00%		0	0.00%
PHYS 1014													39	100.00%		14	100.00%
A, B, or C													37	94.87%		12	85.71%
D or F													2	5.13%		1	7.14%
I													0	0.00%		0	0.00%
W													0	0.00%		1	7.14%

## English

	Fall 2008			Fall 2009			Fall 2010			Fall 2011			Fall 2012			Fall 2013	
	actual	percentage		actual	percentage		actual	percentage		actual	percentage		actual	percentage		actual	percentage
<b>Total Enrolled in Engl 0003</b>	226	100.00%		215	100.00%		225	100.00%		274	100.00%		260	100.00%		257	100.00%
A, B, or C	132	58.41%		122	56.74%		83	36.89%		79	28.83%		90	34.62%		101	39.30%
D or F	71	31.42%		59	27.44%		91	40.44%		152	55.47%		130	50.00%		117	45.53%
I	1	0.44%		0	0.00%		0	0.00%		0	0.00%		0	0.00%		0	0.00%
W	22	9.73%		34	15.81%		51	22.67%		42	15.33%		40	15.38%		39	15.18%
N	0	0.00%		0	0.00%		0	0.00%		0	0.00%		0	0.00%		0	0.00%
AU	0	0.00%		0	0.00%		0	0.00%		1	0.36%		0	0.00%		0	0.00%
<b>Continued Immediately with Engl 1113 (completed Engl 0003 with A, B, or C)</b>	98	100.00%		99	100.00%		66	100.00%		69	100.00%		69	100.00%		55	100.00%
A, B, or C	60	61.22%		67	67.68%		51	77.27%		50	72.46%		46	66.67%		37	67.27%
D or F	23	23.47%		21	21.21%		10	15.15%		17	24.64%		17	24.64%		11	20.00%
I	0	0.00%		0	0.00%		0	0.00%		0	0.00%		0	0.00%		0	0.00%
W	15	15.31%		11	11.11%		5	7.58%		2	2.90%		6	8.70%		7	12.73%
<b>Continued Immediately with Engl 1213 (completed Engl 1113 with A, B, C, or D)</b>	42	100.00%		48	100.00%		30	100.00%		40	100.00%		30	100.00%		29	100.00%
A, B, or C	33	78.57%		41	85.42%		24	80.00%		34	85.00%		19	63.33%		23	79.31%
D or F	4	9.52%		4	8.33%		5	16.67%		2	5.00%		6	20.00%		3	10.34%
I	1	2.38%		0	0.00%		0	0.00%		0	0.00%		0	0.00%		0	0.00%
W	4	9.52%		3	6.25%		1	3.33%		4	10.00%		5	16.67%		3	10.34%

<b>Enrolled in Engl 1113: (Scored high enough on Compass to waive zero- level)</b>	61	100.00%		79	100.00%		77	100.00%		99	100.00%		71	100.00%		73	100.00%
A, B, or C	39	63.93%		47	59.49%		50	64.94%		61	61.62%		38	53.52%		43	58.90%
D or F	14	22.95%		18	22.78%		17	22.08%		26	26.26%		23	32.39%		20	27.40%
I	0	0.00%		0	0.00%		0	0.00%		0	0.00%		0	0.00%		0	0.00%
N	0	0.00%		0	0.00%		0	0.00%			0.00%		1	1.41%		0	0.00%
W	8	13.11%		14	17.72%		10	12.99%		12	12.12%		9	12.68%		10	13.70%
<b>Continued Immediately with Engl 1213: (completed Engl 1113 with A, B, C, or D)</b>	30	100.00%		38	100.00%		37	100.00%		51	100.00%		31	100.00%		39	100.00%
A, B, or C	28	93.33%		29	76.32%		23	62.16%		37	72.55%		24	77.42%		27	69.23%
D or F	2	6.67%		4	10.53%		9	24.32%		9	17.65%		4	12.90%		8	20.51%
I	0	0.00%		0	0.00%		0	0.00%		0	0.00%		0	0.00%		0	0.00%
W	0	0.00%		5	13.16%		5	13.51%		5	9.80%		3	9.68%		4	10.26%

	Fall 2008			Fall 2009			Fall 2010			Fall 2011			Fall 2012			Fall 2013	
	actual	percentage		actual	percentage		actual	percentage		actual	percentage		actual	percentage		actual	percentage
<b>Enrolled in Engl 1113: (Scored high enough on ACT to waive zero-level)</b>	461	100.00%		549	100.00%		560	100.00%		617	100.00%		578	100.00%		513	100.00%
A, B, or C	344	74.62%		408	74.32%		424	75.71%		460	74.55%		396	68.51%		368	71.73%
D or F	87	18.87%		97	17.67%		108	19.29%		107	17.34%		127	21.97%		99	19.30%
I	0	0.00%		0	0.00%		0	0.00%		0	0.00%		0	0.00%		0	0.00%
N	0	0.00%		0	0.00%		0	0.00%		0	0.00%		1	0.17%		0	0.00%
W	30	6.51%		44	8.01%		28	5.00%		50	8.10%		54	9.34%		46	8.97%
<b>Continued Immediately with Engl 1213: (completed Engl 1113 with A, B, C, or D)</b>	276	100.00%		329	100.00%		355	100.00%		382	100.00%		347	100.00%		323	100.00%
A, B, or C	229	82.97%		280	85.11%		284	80.00%		318	83.25%		280	80.69%		286	88.54%
D or F	28	10.14%		31	9.42%		40	11.27%		48	12.57%		46	13.26%		22	6.81%
I	1	0.36%		0	0.00%		0	0.00%		0	0.00%		0	0.00%		0	0.00%
W	18	6.52%		18	5.47%		31	8.73%		16	4.19%		21	6.05%		15	4.64%

<b>Enrolled in Engl 1113: (Remedial cleared other ways-transfer, previous zero-level,etc.)</b>	58	100.00%		78	100.00%		73	100.00%		66	100.00%		66	100.00%		45	100.00%
A, B, or C	37	63.79%		49	62.82%		46	63.01%		41	62.12%		34	51.52%		27	60.00%
D or F	16	27.59%		20	25.64%		16	21.92%		17	25.76%		23	34.85%		9	20.00%
I	0	0.00%		0	0.00%		0	0.00%		0	0.00%		0	0.00%		0	0.00%
W	5	8.62%		9	11.54%		11	15.07%		8	12.12%		9	13.64%		9	20.00%
<b>Continued Immediately with Engl 1213: (completed Engl 1113 with A, B, C, or D)</b>	26	100.00%		41	100.00%		27	100.00%		26	100.00%		28	100.00%		24	87.50%
A, B, or C	19	73.08%		35	85.37%		23	85.19%		20	76.92%		14	50.00%		19	79.17%
D or F	5	19.23%		4	9.76%		2	7.41%		2	7.69%		8	28.57%		1	4.17%
I	0	0.00%		0	0.00%		0	0.00%		0	0.00%		0	0.00%		0	0.00%
W	2	7.69%		2	4.88%		2	7.41%		4	15.38%		6	21.43%		1	4.17%

Reading

	Fall 2008			Fall 2009			Fall 2010			Fall 2011			Fall 2012			Fall 2013	
	actual	percentage		actual	percentage		actual	percentage		actual	percentage		actual	percentage		actual	percentage
<b>Total Enrolled in Read 0223</b>	115	100.00%		121	100.00%		97	100.00%		120	100.00%		113	100.00%		98	100.00%
A, B, or C	73	63.48%		87	71.90%		65	67.01%		66	55.00%		62	54.87%		51	52.04%
D or F	30	26.09%		24	19.83%		18	18.56%		40	33.33%		35	30.97%		32	32.65%
I	0	0.00%		0	0.00%		0	0.00%		0	0.00%		0	0.00%		0	0.00%
W	12	10.43%		10	8.26%		14	14.43%		14	11.67%		16	14.16%		15	15.31%
<b>Continued Immediately with: (completed Read 0223 with A, B, or C)</b>																	
Pols 1113	20	100.00%		22	100.00%		22	100.00%		20	100.00%		18	100.00%		11	100.00%
A, B, or C	7	35.00%		12	54.55%		11	50.00%		4	20.00%		10	55.56%		0	0.00%
D or F	12	60.00%		9	40.91%		7	31.82%		13	65.00%		7	38.89%		9	81.82%
I	0	0.00%		0	0.00%		0	0.00%		0	0.00%		0	0.00%		0	0.00%
W	1	5.00%		1	4.55%		4	18.18%		3	15.00%		1	5.56%		2	18.18%
Hist 2483	13	100.00%		12	100.00%		16	100.00%		13	100.00%		2	100.00%		2	100.00%
A, B, or C	5	38.46%		4	33.33%		11	68.75%		4	30.77%		1	50.00%		1	50.00%
D or F	8	61.54%		7	58.33%		2	12.50%		9	69.23%		0	0.00%		1	50.00%
I	0	0.00%		0	0.00%		0	0.00%		0	0.00%		0	0.00%		0	0.00%
W	0	0.00%		1	8.33%		3	18.75%		0	0.00%		1	50.00%		0	0.00%
Hist 2493	15	100.00%		7	100.00%		3	100.00%		3	100.00%		11	100.00%		3	100.00%
A, B, or C	6	40.00%		4	57.14%		2	66.67%		2	66.67%		4	36.36%		2	66.67%
D or F	6	40.00%		2	28.57%		1	33.33%		0	0.00%		5	45.45%		0	0.00%
I	0	0.00%		0	0.00%		0	0.00%		0	0.00%		0	0.00%		0	0.00%
W	3	20.00%		1	14.29%		0	0.00%		1	33.33%		2	18.18%		1	33.33%

<b>Enrolled in: (Scored high enough on Compass to waive zero-level)</b>																	
Pols 1113	58	100.00%		50	100.00%		59	100.00%		71	100.00%		64	100.00%		36	100.00%
A, B, or C	44	75.86%		26	52.00%		43	72.88%		54	76.06%		41	64.06%		23	63.89%
D or F	7	12.07%		16	32.00%		12	20.34%		13	18.31%		19	29.69%		10	27.78%
I	0	0.00%		0	0.00%		0	0.00%		0	0.00%		0	0.00%		0	0.00%
W	7	12.07%		8	16.00%		4	6.78%		4	5.63%		4	6.25%		3	8.33%
Hist 2483	38	100.00%		45	100.00%		44	100.00%		30	100.00%		43	100.00%		28	100.00%
A, B, or C	25	65.79%		31	68.89%		29	65.91%		17	56.67%		21	48.84%		21	75.00%
D or F	10	26.32%		13	28.89%		12	27.27%		8	26.67%		18	41.86%		4	14.29%
I	1	2.63%		0	0.00%		0	0.00%		0	0.00%		0	0.00%		0	0.00%
W	2	5.26%		1	2.22%		3	6.82%		5	16.67%		4	9.30%		3	10.71%



	Fall 2008			Fall 2009			Fall 2010			Fall 2011			Fall 2012			Fall 2013	
	actual	percentage		actual	percentage		actual	percentage		actual	percentage		actual	percentage		actual	percentage
Hist 2493	31	100.00%		48	100.00%		28	100.00%		25	100.00%		35	100.00%		23	100.00%
A, B, or C	23	74.19%		31	64.58%		17	60.71%		10	40.00%		26	74.29%		15	65.22%
D or F	6	19.35%		6	12.50%		5	17.86%		12	48.00%		5	14.29%		4	17.39%
I	0	0.00%		0	0.00%		0	0.00%		0	0.00%		0	0.00%		0	0.00%
W	2	6.45%		11	22.92%		6	21.43%		3	12.00%		4	11.43%		4	17.39%

<b>Enrolled in: (Scored high enough on ACT to waive zero-level)</b>																	
Pols 1113	295	100.00%		325	100.00%		354	100.00%		402	100.00%		385	100.00%		327	100.39%
A, B, or C	206	69.83%		244	75.08%		261	73.73%		315	78.36%		298	77.40%		259	79.20%
D or F	58	19.66%		56	17.23%		59	16.67%		66	16.42%		66	17.14%		50	15.29%
N	0	0.00%		0	0.00%		0	0.00%		0	0.00%		0	0.00%		1	0.39%
I	0	0.00%		0	0.00%		0	0.00%		0	0.00%		0	0.00%		3	0.92%
W	31	10.51%		25	7.69%		34	9.60%		21	5.22%		21	5.45%		15	4.59%
AU	0	0.00%		0	0.00%		0	0.00%		0	0.00%		0	0.00%		0	0.00%
Hist 2483	165	100.00%		199	100.00%		231	100.00%		223	100.00%		216	100.00%		169	100.00%
A, B, or C	115	69.70%		137	68.84%		165	71.43%		146	65.47%		128	59.26%		138	81.66%
D or F	44	26.67%		43	21.61%		44	19.05%		55	24.66%		69	31.94%		23	13.61%
I	0	0.00%		0	0.00%		0	0.00%		1	0.45%		0	0.00%		0	0.00%
W	6	3.64%		19	9.55%		22	9.52%		21	9.42%		19	8.80%		8	4.73%
Hist 2493	146	100.00%		165	100.00%		171	100.00%		144	100.00%		172	100.00%		127	100.00%
A, B, or C	110	75.34%		118	71.52%		117	68.42%		91	63.19%		112	65.12%		95	74.80%
D or F	23	15.75%		31	18.79%		39	22.81%		41	28.47%		47	27.33%		25	19.69%
I	1	0.68%		0	0.00%		0	0.00%		0	0.00%		0	0.00%		0	0.00%
W	12	8.22%		16	9.70%		15	8.77%		12	8.33%		13	7.56%		7	5.51%

<b>Enrolled in: (Remedial cleared by other ways-transfer, previous zero-level,etc.)</b>																	
Pols 1113	67	100.00%		60	100.00%		72	100.00%		52	100.00%		50	100.00%		43	100.00%
A, B, or C	44	65.67%		38	63.33%		41	56.94%		26	50.00%		28	56.00%		27	62.79%
D or F	16	23.88%		14	23.33%		16	22.22%		15	28.85%		16	32.00%		14	32.56%
I	0	0.00%		0	0.00%		0	0.00%		0	0.00%		0	0.00%		0	0.00%
W	7	10.45%		8	13.33%		15	20.83%		11	21.15%		6	12.00%		2	4.65%
Hist 2483	43	100.00%		31	100.00%		35	100.00%		28	100.00%		19	100.00%		12	100.00%
A, B, or C	25	58.14%		16	51.61%		21	60.00%		14	50.00%		9	47.37%		11	91.67%
D or F	12	27.91%		12	38.71%		8	22.86%		13	46.43%		9	47.37%		1	8.33%
I	0	0.00%		0	0.00%		0	0.00%		0	0.00%		0	0.00%		0	0.00%
W	6	13.95%		3	9.68%		6	17.14%		1	3.57%		1	5.26%		0	0.00%

	Fall 2008			Fall 2009			Fall 2010			Fall 2011			Fall 2012			Fall 2013	
	actual	percentage		actual	percentage		actual	percentage		actual	percentage		actual	percentage		actual	percentage
Hist 2493	16	100.00%		20	100.00%		28	100.00%		18	100.00%		14	100.00%		21	100.00%
A, B, or C	13	81.25%		11	55.00%		11	39.29%		9	50.00%		7	50.00%		15	71.43%
D or F	1	6.25%		9	45.00%		11	39.29%		6	33.33%		2	14.29%		4	19.05%
I	0	0.00%		0	0.00%		0	0.00%		0	0.00%		0	0.00%		0	0.00%
W	2	12.50%		0	0.00%		6	21.43%		3	16.67%		5	35.71%		2	9.52%

## Science

<b>Total Enrolled in Biol 0123</b>	49	100.00%		65	100.00%		43	100.00%		46	100.00%		50	100.00%		35	100.00%
A, B, or C	31	63.27%		57	87.69%		34	79.07%		34	73.91%		34	68.00%		16	45.71%
D or F	9	18.37%		4	6.15%		6	13.95%		11	23.91%		7	14.00%		11	31.43%
I	0	0.00%		0	0.00%		0	0.00%		0	0.00%		0	0.00%		0	0.00%
W	9	18.37%		4	6.15%		3	6.98%		1	2.17%		9	18.00%		8	22.86%
<b>Continued Immediately with: (completed Biol 0123 with A, B, or C)</b>																	
Biol 1114	6	100.00%		4	100.00%		0	0.00%		4	100.00%		3	100.00%		2	100.00%
A, B, or C	4	66.67%		3	75.00%		0	0.00%		3	75.00%		2	66.67%		1	50.00%
D or F	2	33.33%		1	25.00%		0	0.00%		1	25.00%		1	33.33%		0	0.00%
I	0	0.00%		0	0.00%		0	0.00%		0	0.00%		0	0.00%		0	0.00%
W	0	0.00%		0	0.00%		0	0.00%		0	0.00%		0	0.00%		1	50.00%
Biol 1144	5	100.00%		4	100.00%		5	100.00%		6	100.00%		3	100.00%		1	100.00%
A, B, or C	3	60.00%		1	25.00%		3	60.00%		3	50.00%		1	33.33%		1	100.00%
D or F	1	20.00%		2	50.00%		2	40.00%		2	33.33%		1	33.33%		0	0.00%
I	0	0.00%		0	0.00%		0	0.00%		0	0.00%		0	0.00%		0	0.00%
W	1	20.00%		1	25.00%		0	0.00%		1	16.67%		1	33.33%		0	0.00%
GEOL 1014													3	100.00%		1	100.00%
A, B, or C													2	66.67%		0	0.00%
D or F													1	33.33%		1	100.00%
I													0	0.00%		0	0.00%
W													0	0.00%		0	0.00%
PHYS 1014													3	100.00%		1	100.00%
A, B, or C													2	66.67%		1	100.00%
D or F													1	33.33%		0	0.00%
I													0	0.00%		0	0.00%
W													0	0.00%		0	0.00%

<b>Enrolled in: (Scored high enough on Stanford Science Test to waive zero-level)</b>																	
Biol 1114	29	100.00%		45	100.00%		60	100.00%		43	100.00%		49	100.00%		24	100.00%
A, B, or C	21	72.41%		31	68.89%		43	71.67%		25	58.14%		30	61.22%		18	75.00%
D or F	6	20.69%		12	26.67%		9	15.00%		14	32.56%		14	28.57%		4	16.67%
I	0	0.00%		0	0.00%		0	0.00%		0	0.00%		0	0.00%		0	0.00%
W	2	6.90%		2	4.44%		8	13.33%		4	9.30%		5	10.20%		2	8.33%
Biol 1144	49	100.00%		58	100.00%		53	100.00%		49	100.00%		43	100.00%		27	100.00%

	Fall 2008			Fall 2009			Fall 2010			Fall 2011			Fall 2012			Fall 2013	
	actual	percentage		actual	percentage		actual	percentage		actual	percentage		actual	percentage		actual	percentage
A, B, or C	23	46.94%		29	50.00%		24	45.28%		23	46.94%		21	48.84%		12	44.44%
D or F	18	36.73%		11	18.97%		19	35.85%		14	28.57%		13	30.23%		13	48.15%
I	0	0.00%		0	0.00%		0	0.00%		0	0.00%		0	0.00%		0	0.00%
W	8	16.33%		18	31.03%		10	18.87%		12	24.49%		9	20.93%		2	7.41%
GEOL 1014													33	100.00%		28	100.00%
A, B, or C													16	48.48%		20	71.43%
D or F													11	33.33%		4	14.29%
I													1	3.03%		0	0.00%
W													5	15.15%		4	14.29%
PHYS 1014													12	100.00%		18	100.00%
A, B, or C													12	100.00%		17	94.44%
D or F													0	0.00%		1	5.56%
I													0	0.00%		0	0.00%
W													0	0.00%		0	0.00%

---

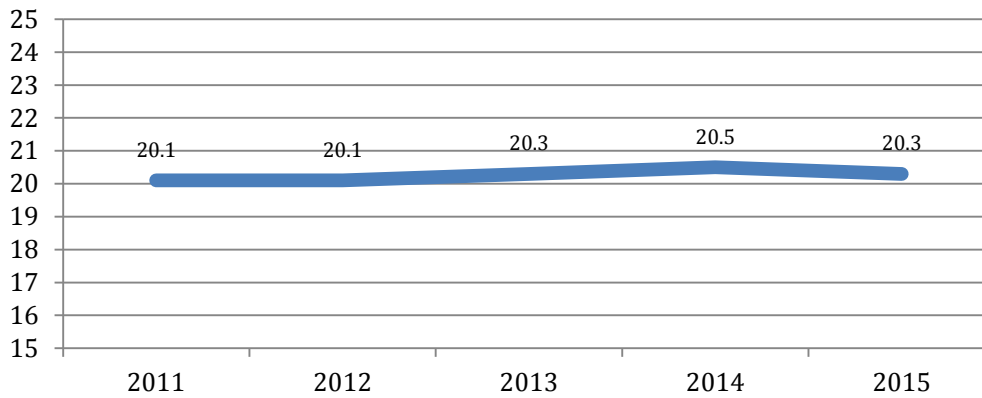
	Fall 2008			Fall 2009			Fall 2010			Fall 2011			Fall 2012			Fall 2013	
	actual	percentage		actual	percentage		actual	percentage		actual	percentage		actual	percentage		actual	percentage
<b>Enrolled in: (Scored high enough on ACT to waive zero-level)</b>																	
Biol 1114	122	100.00%		156	100.00%		156	100.00%		159	100.00%		180	100.00%		147	100.00%
A, B, or C	98	80.33%		128	82.05%		127	81.41%		123	77.36%		137	76.11%		116	78.91%
D or F	14	11.48%		16	10.26%		22	14.10%		24	15.09%		33	18.33%		19	12.93%
I	0	0.00%		0	0.00%		0	0.00%		0	0.00%		0	0.00%		0	0.00%
W	10	8.20%		12	7.69%		7	4.49%		12	7.55%		10	5.56%		12	8.16%
Biol 1144	176	100.00%		200	100.00%		217	100.00%		238	100.00%		235	100.00%		184	100.00%
A, B, or C	115	65.34%		122	61.00%		145	66.82%		167	70.17%		141	60.00%		128	69.57%
D or F	37	21.02%		47	23.50%		39	17.97%		37	15.55%		64	27.23%		42	22.83%
I	0	0.00%		0	0.00%		0	0.00%		0	0.00%		0	0.00%		0	0.00%
W	24	13.64%		31	15.50%		33	15.21%		34	14.29%		30	12.77%		14	7.61%
GEOL 1014													139	100.00%		114	100.00%
A, B, or C													84	60.43%		74	64.91%
D or F													35	25.18%		25	21.93%
I													2	1.44%		0	0.00%
N													1	0.72%		0	0.00%
W													17	12.23%		15	13.16%
PHYS 1014													46	100.00%		60	100.00%
A, B, or C													44	95.65%		47	78.33%
D or F													2	4.35%		7	11.67%
I													0	0.00%		0	0.00%
W													0	0.00%		6	10.00%

<b>Enrolled in: (Remedial cleared by other ways-transfer, previous zero-level,etc.)</b>																	
Biol 1114	33	100.00%		47	100.00%		31	100.00%		30	100.00%		38	100.00%		22	100.00%
A, B, or C	27	81.82%		35	74.47%		22	70.97%		23	76.67%		24	63.16%		17	77.27%
D or F	5	15.15%		7	14.89%		5	16.13%		5	16.67%		11	28.95%		3	13.64%
I	0	0.00%		0	0.00%		0	0.00%		0	0.00%		0	0.00%		0	0.00%
W	1	3.03%		5	10.64%		4	12.90%		2	6.67%		3	7.89%		2	9.09%
Biol 1144	70	100.00%		64	100.00%		67	100.00%		70	100.00%		50	100.00%		48	100.00%
A, B, or C	44	62.86%		42	65.63%		46	68.66%		47	67.14%		26	52.00%		31	64.58%
D or F	16	22.86%		15	23.44%		12	17.91%		10	14.29%		12	24.00%		8	16.67%
I	0	0.00%		0	0.00%		0	0.00%		0	0.00%		0	0.00%		0	0.00%
W	10	14.29%		7	10.94%		9	13.43%		13	18.57%		12	24.00%		9	18.75%
GEOL 1014													51	100.00%		40	100.00%
A, B, or C													29	56.86%		30	75.00%
D or F													13	25.49%		5	12.50%
I													1	1.96%		0	0.00%
W													8	15.69%		5	12.50%
PHYS 1014													15	100.00%		11	100.00%
A, B, or C													14	93.33%		11	100.00%
D or F													0	0.00%		0	0.00%

		Fall 2008		Fall 2009		Fall 2010		Fall 2011		Fall 2012		Fall 2013			
		actual	percentage		actual	percentage		actual	percentage		actual	percentage		actual	percentage
I											0	0.00%		0	0.00%
W											1	6.67%		0	0.00%

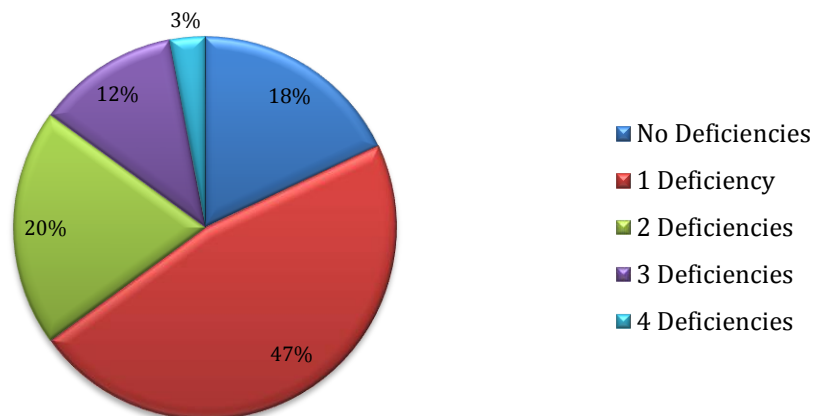
## Mean First-Time Freshmen ACT Scores

### ACT Composite



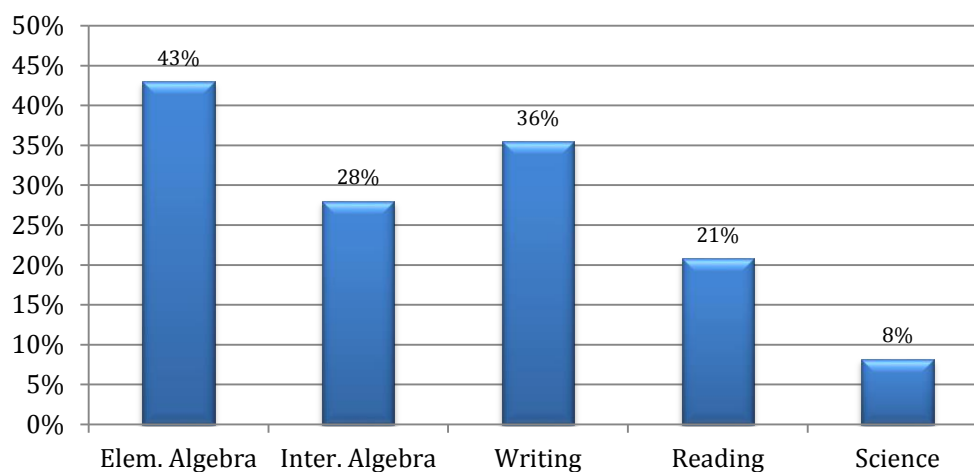
Source: 2015 Fact Book

## 35% of RSU Fall 2013 First-time Freshman Cohort Required Remediation in Two or More Areas



Source: RSU Student Information Database

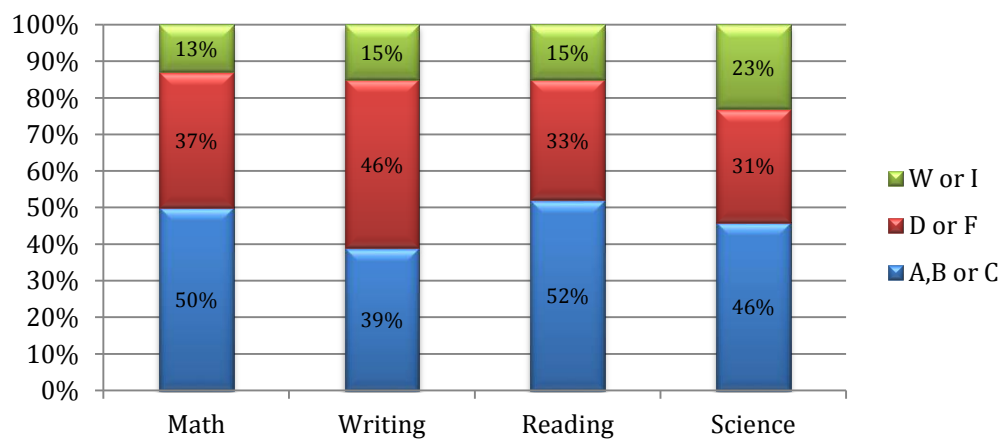
## Fall 2013 First-Time Freshman Cohort Deficiency Areas



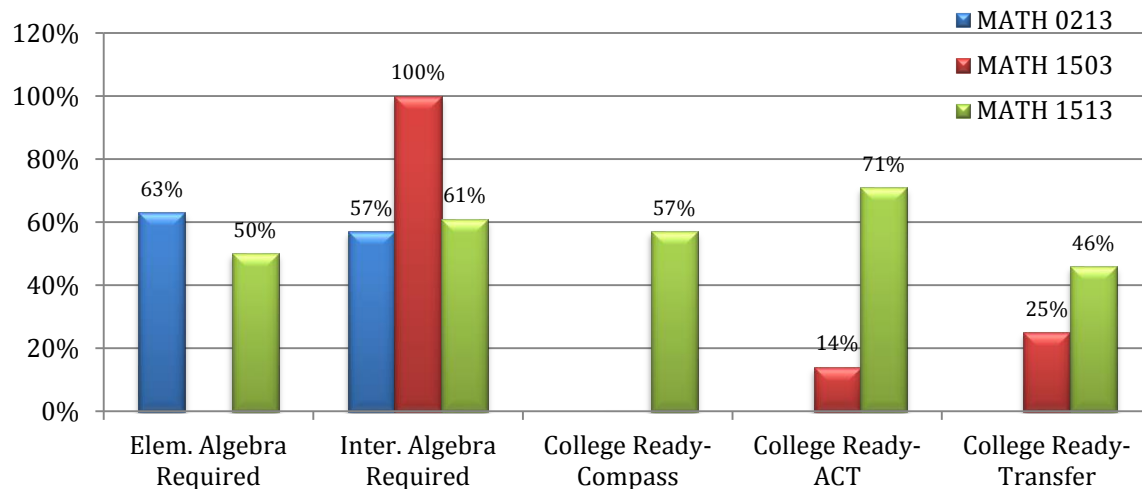
Source: 2015 OSRHE Remediation Report

## Entry-Level Assessment Success Rates in Developmental Studies Courses

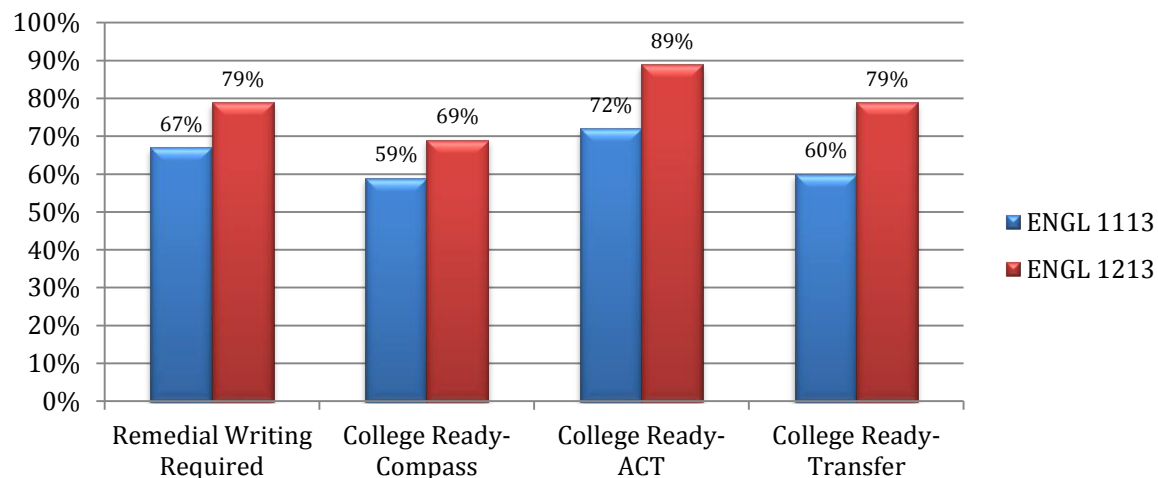
Fall 2013 First-time Freshmen Tracked through  
Fall 2015



### Student Success Rates in College Courses Math: Fall 2013 Cohort Tracked through Fall 2015

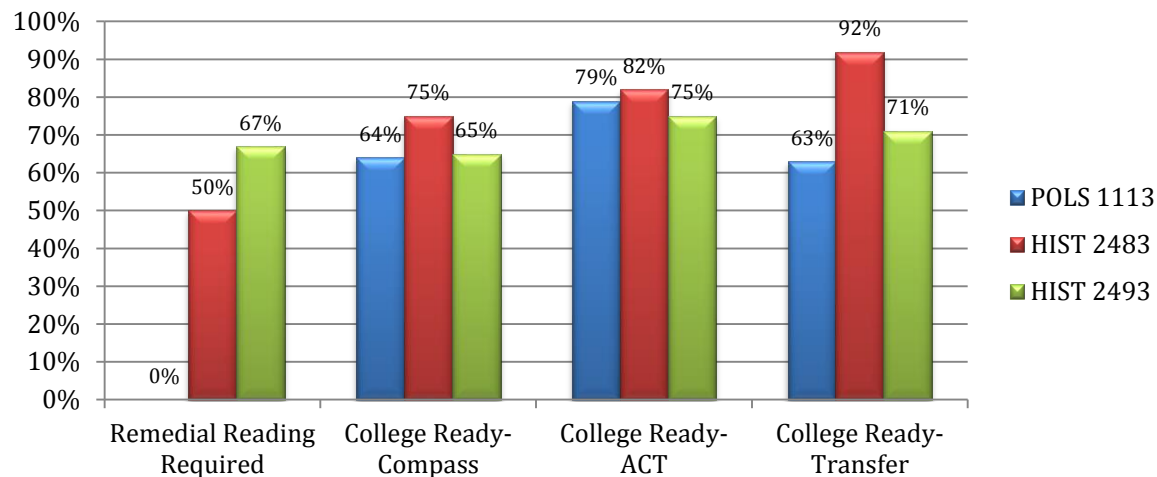


### Student Success Rates in College Courses English: Fall 2013 Cohort Tracked through Fall 2015





### Student Success Rates in College Courses Reading: Fall 2013 Cohort Tracked through Fall 2015



### Student Success Rates in College Courses Science: Fall 2013 Cohort Tracked through Fall 2015

