

# ESS

**The ACT Evaluation/Survey Service**  
For Educational Institutions and Agencies

**ACT™**

*Alumni Survey (4-Year) Graphics Report  
for  
ROGERS STATE UNIVERSITY  
Code: 3420*

*Prepared by ACT Survey Research Services  
October 5, 2010*

**Alumni Survey (4-Year) Graphics Report**  
**For**  
**ROGERS STATE UNIVERSITY**

*Prepared by ACT Survey Research Services*  
*10/05/10*

---

*This report contains pie charts & bar graphs for selected items for your college and for the current national normative sample. For all Likert scale items (e.g., 5-point Satisfaction scale), data are displayed for your institution's top and bottom five items as well as the five items with the greatest and least differences for your institution in comparison with national normative data. Please note percentages may not add to 100 due to the effect of rounding.*

*The "National Norms" used in this report are based on 17,695 student records from 52 postsecondary schools that administered the ACT Alumni Survey (4-Year) between July 1, 2000 and June 30, 2007. Normative data of this type are often referred to as "user norms" because they simply represent a composite of the data obtained by a number of institutions that administered the instrument during a particular period of time. See the "Normative Data Report" for the Alumni Survey (4-Year) for more information concerning the nature of the national norms sample.*

*See the following contact information by related topic for further details or assistance.*

**Ordering Surveys**

*ESS Customer Service*  
*319/337-1893 (fax) 319/337-1467*

**Survey Scanning and Reporting**

*ESS Production Services*  
*319/337-1186 (fax) 319/337-1578*

**Discussing research related issues (e.g., sampling, subgroup selection, item construction, etc.), survey administration, specialized services and materials**

*Survey Research Services*  
*319/341-2623 (fax) 319/341-2284*

**Using report results for accreditation, outcomes assessment, and effectiveness measures**

*Educational Services*  
*319/337-1053 (fax) 319/337-1790*  
*outcomes@act.org*

<http://www.act.org/ess>

ACT

500 ACT Drive  
P.O. Box 168  
Iowa City, IA 52243-0168

## ***Table of Contents***

---

<b><i>Section I, Item B: Age</i></b> . . . . .	<b><i>1</i></b>
<b><i>Section I, Item C: Racial/Ethnic</i></b> . . . . .	<b><i>2</i></b>
<b><i>Section I, Item G: Sex</i></b> . . . . .	<b><i>3</i></b>
<b><i>Section I, Item M: Do you plan to attend this college in the future?</i></b> . . . . .	<b><i>4</i></b>
<b><i>Section II, Item C: How well did this college prepare you for your continuing education?</i></b> . . . . .	<b><i>5</i></b>
<b><i>Section III, Item B: If you could start college over, would you choose to attend this college?</i></b> . . . . .	<b><i>6</i></b>
<b><i>Section III, Item F: Primary Reason for Attending this College</i></b> . . . . .	<b><i>7</i></b>
<b><i>Section III, Item I: How much did your education at this college contribute to your personal growth?</i></b> . . . . .	<b><i>8</i></b>
<b><i>Section III: Item I: Personal Growth - Largest Positive and Largest Negative Differences</i></b> . . . . .	<b><i>9</i></b>
<b><i>Section IV, Item A: What are you currently doing?</i></b> . . . . .	<b><i>10</i></b>
<b><i>Section IV, Item B: Source from which you learned about your first job after graduating from college</i></b> . . . . .	<b><i>11</i></b>
<b><i>Section IV, Item I: Have you sought help from this college's placement office?</i></b> . . . . .	<b><i>12</i></b>
<b><i>Section IV: Item K: Current Annual Salary</i></b> . . . . .	<b><i>13</i></b>

ROGERS STATE UNIVERSITY

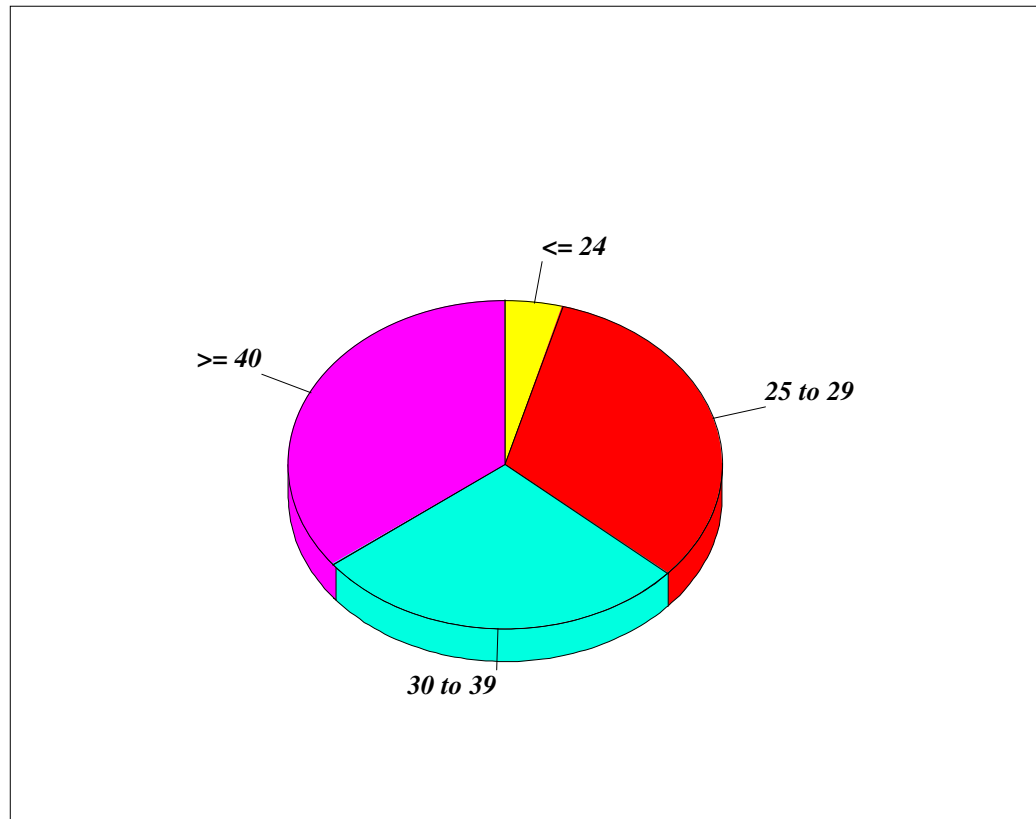


Figure 1. Section I - Background Information, Item B: Age

Age	Your Institution %	National Norms %
20 or Under	.0	.8
21 or 22	1.1	5.3
23 or 24	3.2	15.2
25 or 26	16.1	15.5
27 to 29	16.1	18.7
30 to 39	28.0	22.0
40 to 61	34.4	21.3
62 or Over	1.1	1.2
<= 24	4.3	21.3
25 to 29	32.3	34.1
30 to 39	28.0	22.0
>= 40	35.5	22.6

ROGERS STATE UNIVERSITY

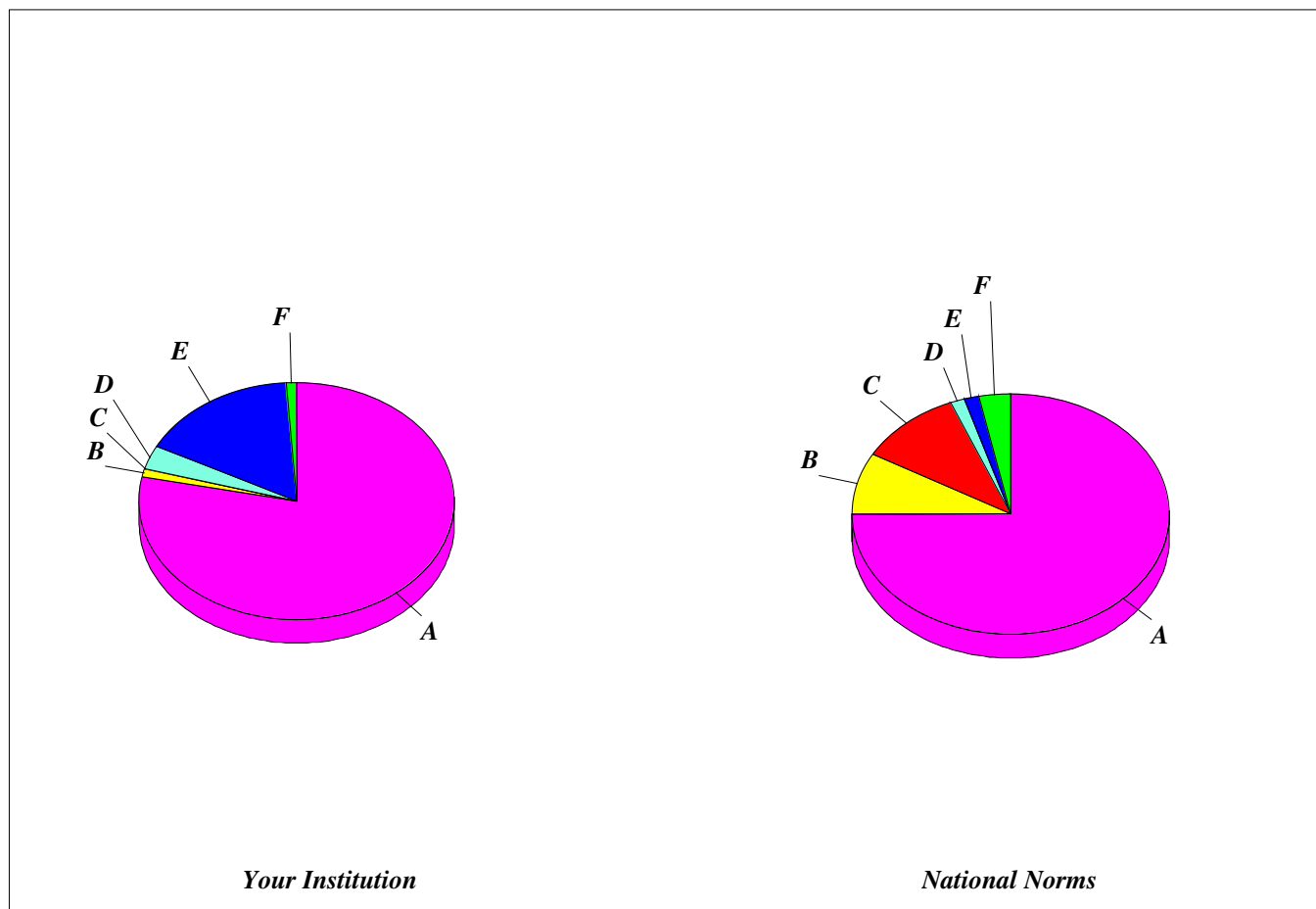


Figure 2. Section I - Background Information, Item C: Racial/Ethnicity

<i>Race/Ethnicity</i>	<i>Your School %</i>	<i>National Norms %</i>
<i>African American or Black</i>	1.1	8.4
<i>Native American (Indian, Alaskan, Hawaiian)</i>	16.3	1.5
<i>Caucasian or White</i>	78.3	74.9
<i>Mexican American, Mexican Origin</i>	.0	8.2
<i>Asian American, Oriental, Pacific Islander</i>	3.3	1.5
<i>Puerto Rican, Cuban, Other Latino or Hispanic</i>	.0	2.2
<i>Other</i>	.0	1.1
<i>Prefer not to respond</i>	1.1	2.1
<i>A. White</i>	78.3	74.9
<i>B. Black</i>	1.1	8.4
<i>C. Hispanic</i>	.0	10.4
<i>D. Asian</i>	3.3	1.5
<i>E. Native American</i>	16.3	1.5
<i>F. Other/Prefer not to respond</i>	1.1	3.2

ROGERS STATE UNIVERSITY

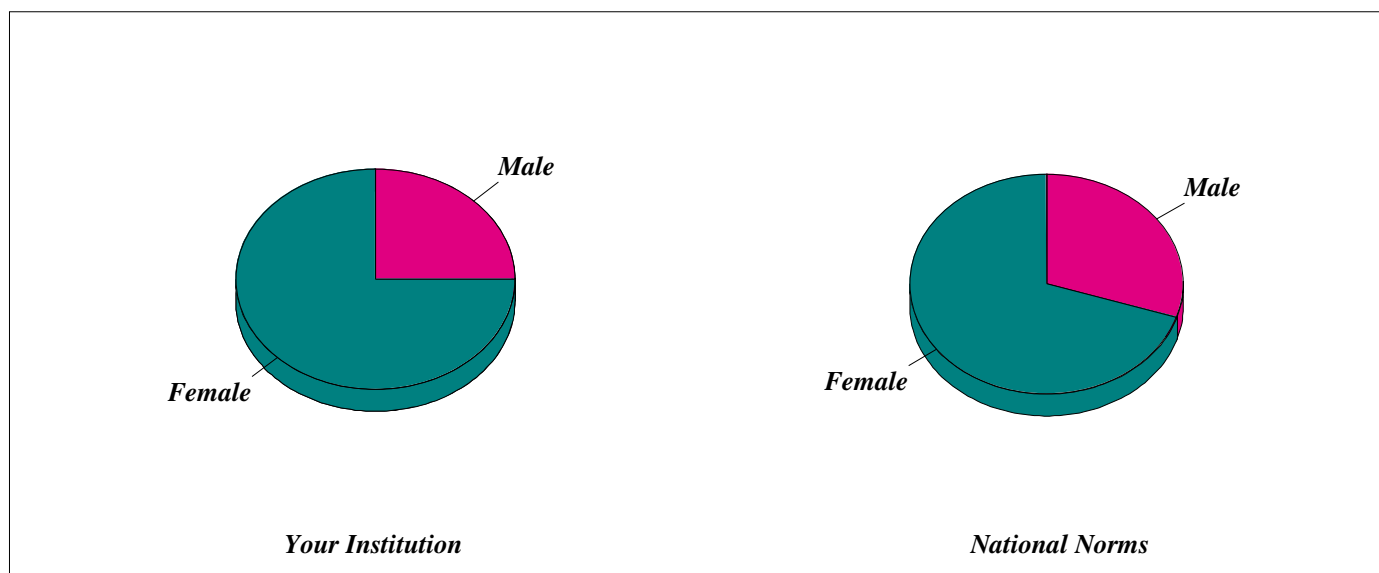


Figure 3. Section I - Background Information, Item G: Sex

Sex	Your Institution %	National Norms %
Male	25.0	29.9
Female	75.0	70.1

ROGERS STATE UNIVERSITY

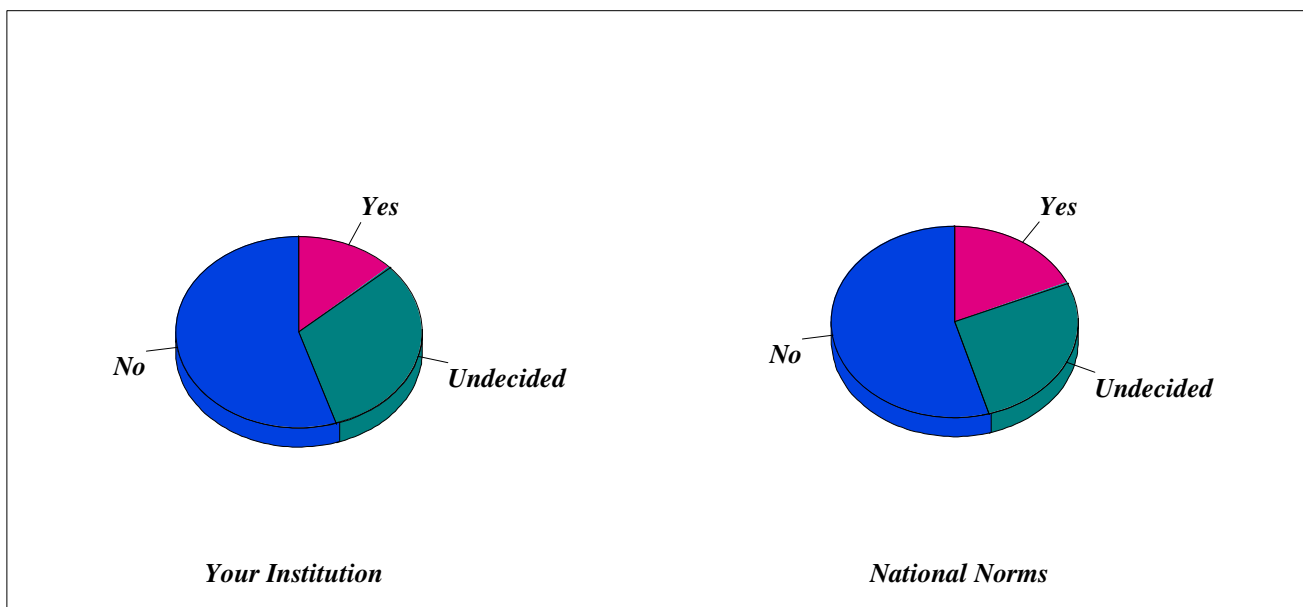
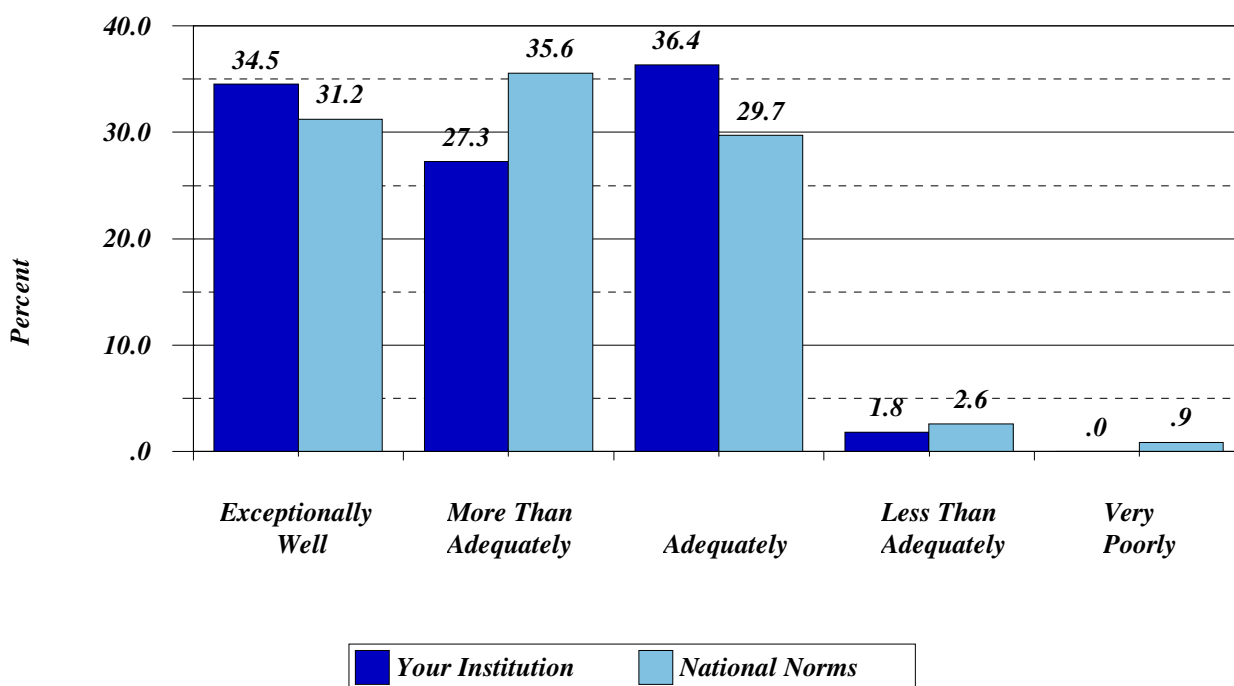


Figure 4. Section I - Background Information, Item M: Do you plan to attend this college in the future?

Item	Your Institution %	National Norms %
Yes	13.2	18.4
Undecided	31.9	27.1
No	54.9	54.5

## ROGERS STATE UNIVERSITY

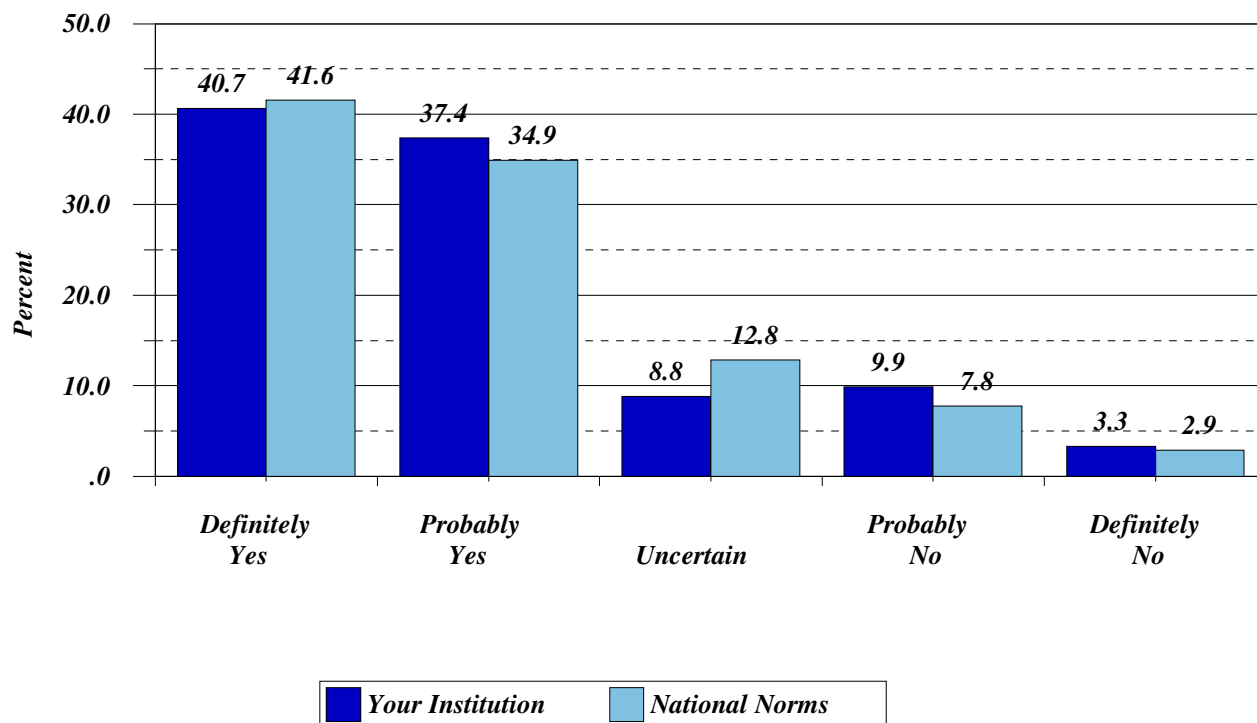


**Figure 5. Section II - Continuing Education, Item C:**  
**How well did this college prepare you for your continuing education?**

<i>Item</i>	<i>Your Institution %</i>	<i>National Norms %</i>
<i>Exceptionally Well</i>	<i>34.5</i>	<i>31.2</i>
<i>More Than Adequately</i>	<i>27.3</i>	<i>35.6</i>
<i>Adequately</i>	<i>36.4</i>	<i>29.7</i>
<i>Less Than Adequately</i>	<i>1.8</i>	<i>2.6</i>
<i>Very Poorly</i>	<i>.0</i>	<i>.9</i>
<i>Total Group Average:</i>	<i>3.95</i>	<i>3.94</i>

(Preparation Scale: 5=exceptionally well, 4=more than adequately,  
 3=adequately, 2=less than adequately, 1=very poorly)

## ROGERS STATE UNIVERSITY



**Figure 6. Section III - College Experiences, Item B:**  
*If you could start college over, would you choose to attend this college?*

<i>Item</i>	<i>Your Institution %</i>	<i>National Norms %</i>
<i>Definitely Yes</i>	<i>40.7</i>	<i>41.6</i>
<i>Probably Yes</i>	<i>37.4</i>	<i>34.9</i>
<i>Uncertain</i>	<i>8.8</i>	<i>12.8</i>
<i>Probably No</i>	<i>9.9</i>	<i>7.8</i>
<i>Definitely No</i>	<i>3.3</i>	<i>2.9</i>
<i>Total Group Average:</i>	<i>4.02</i>	<i>4.04</i>

(Choice Scale: 5=definitely yes, 4=probably yes, 3=uncertain, 2=probably no, 1=definitely no)

ROGERS STATE UNIVERSITY

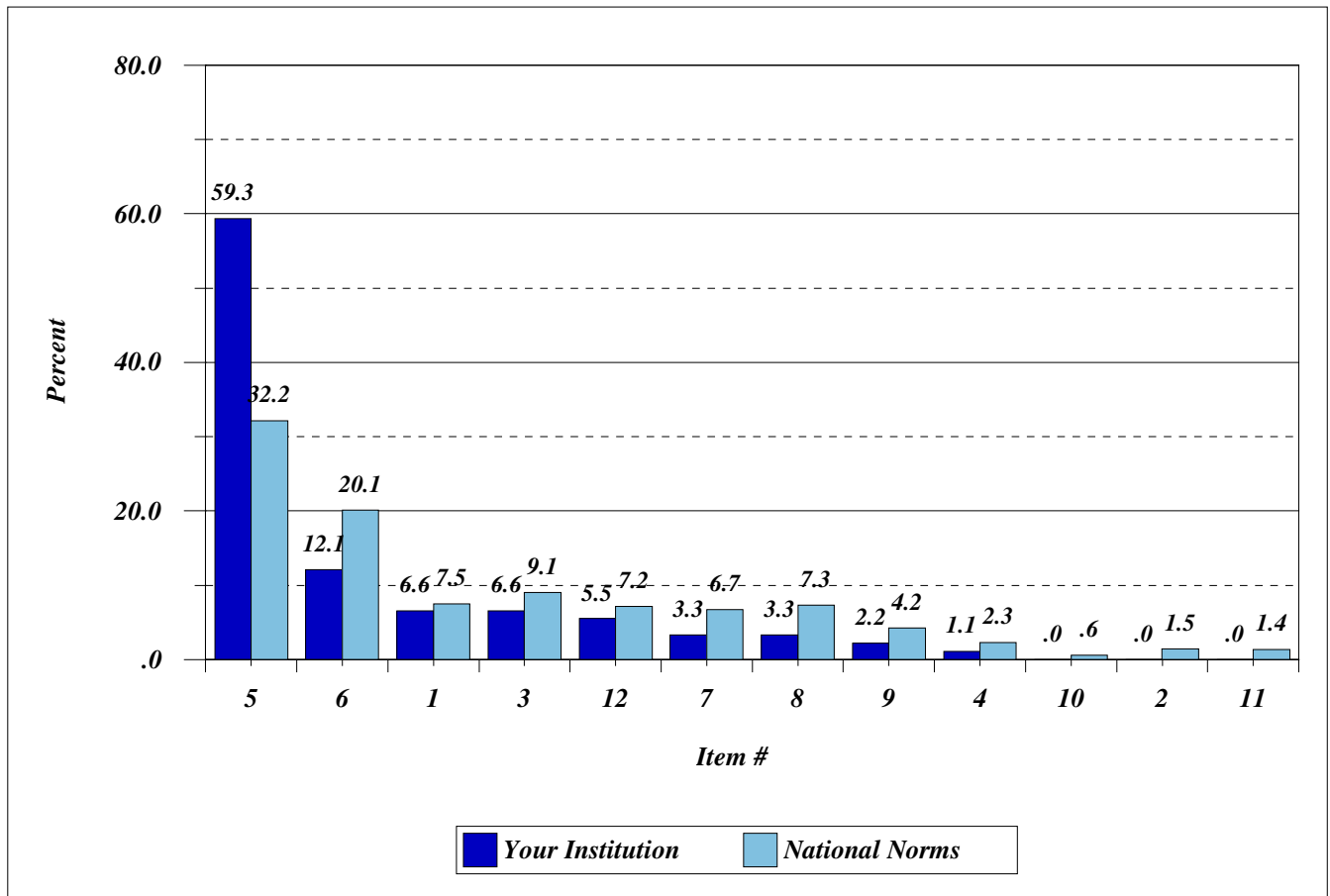


Figure 7. Section III - College Experiences, Item F: Primary Reason for Attending this College

Item	Your Institution %	National Norms %
5 Location	59.3	32.2
6 Type of Programs Available	12.1	20.1
1 Cost	6.6	7.5
3 Size	6.6	9.1
12 Other	5.5	7.2
7 Academic Reputation	3.3	6.7
8 Availability of Scholarship or Financial Aid	3.3	7.3
9 Advice of Parents or Relatives	2.2	4.2
4 Social Atmosphere	1.1	2.3
10 Advice of High School Personnel	.0	.6
2 Admissions Standards	.0	1.5
11 To Be with Friends	.0	1.4

ROGERS STATE UNIVERSITY

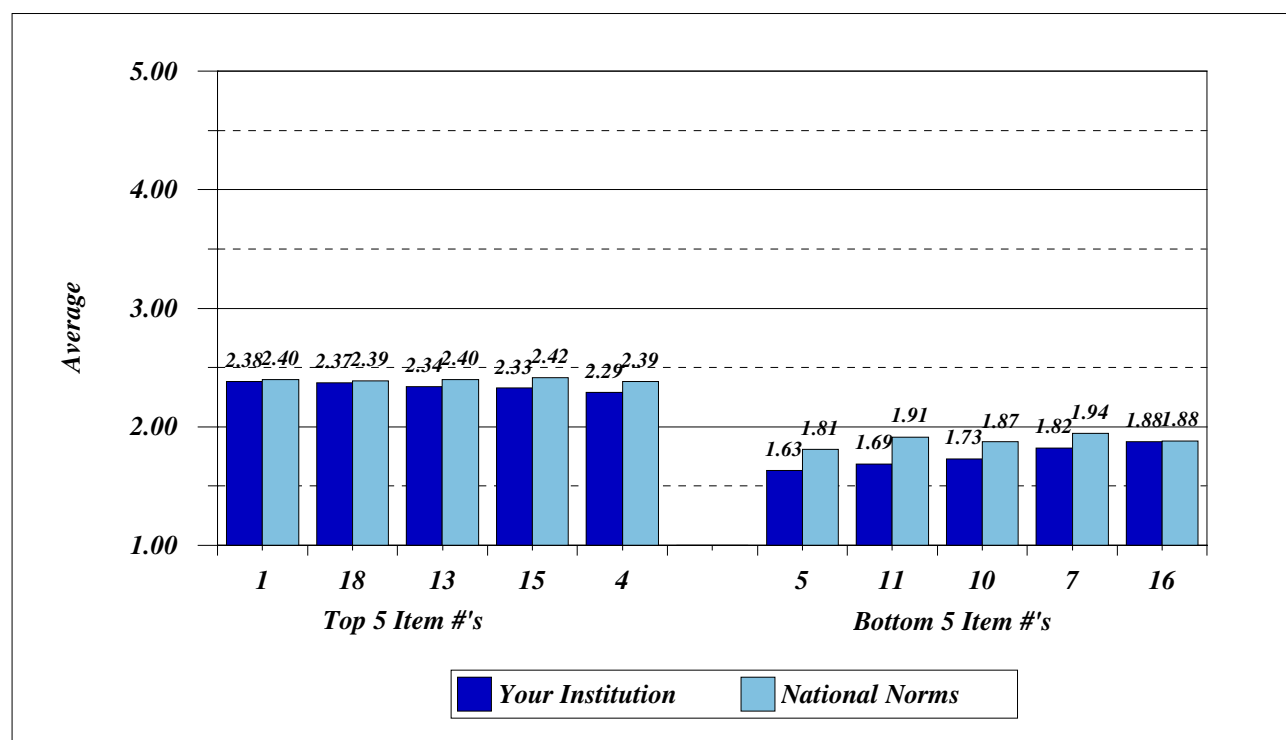


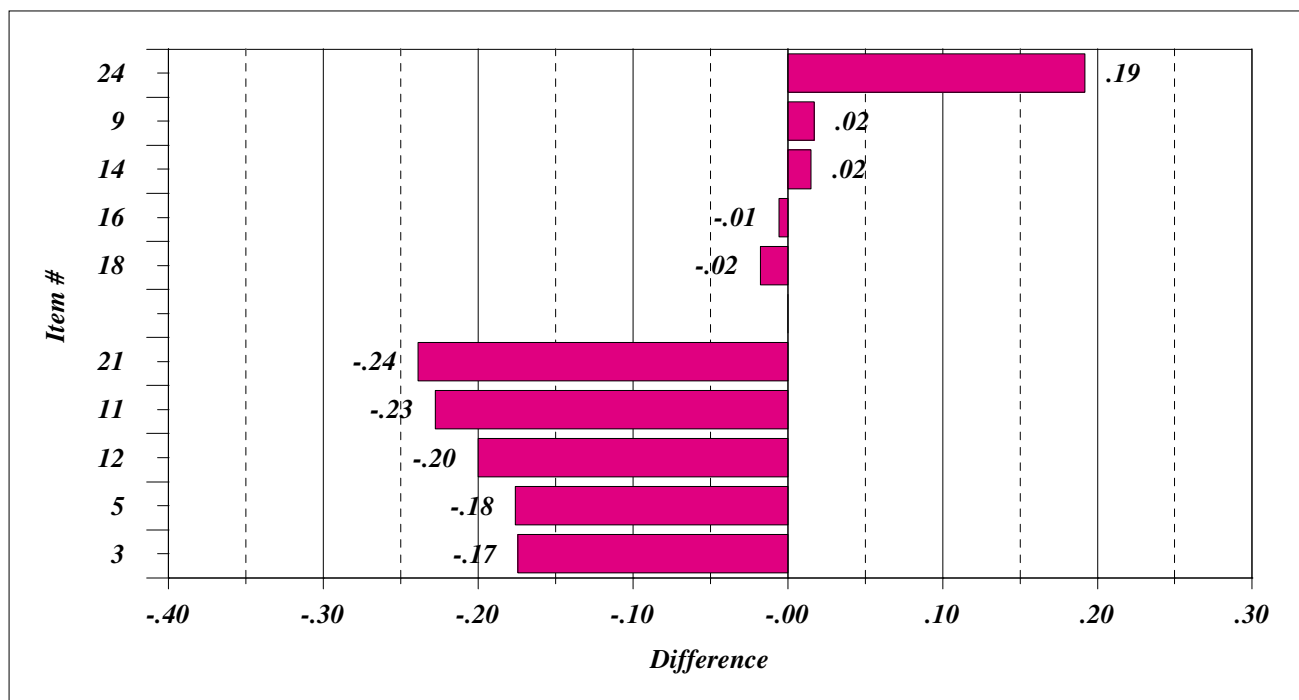
Figure 8. Section III - College Experiences, Item I:  
How much did your education at this college contribute to your personal growth?

Item #		Your Institution Avg	National Norms Avg
<b>Top 5 for Your School</b>			
1	Writing effectively	2.38	2.40
18	Persisting at difficult tasks	2.37	2.39
13	Organizing your time effectively	2.34	2.40
15	Planning and carrying out projects	2.33	2.42
4	Working independently	2.29	2.39
<b>Bottom 5 for Your School</b>			
5	Managing personal/family finances	1.63	1.81
11	Caring for your own physical and mental health	1.69	1.91
10	Understanding consumer issues	1.73	1.87
7	Understanding graphic information	1.82	1.94
16	Understanding/applying mathematics in your daily activities	1.88	1.88

(Growth Scale: 3=very much, 2=somewhat, 1=very little)

NOTE: Items with fewer than 10 respondents were not included in the analyses.

ROGERS STATE UNIVERSITY



**Figure 9. Section III - College Experiences, Item I: Personal Growth**  
**Largest Positive & Largest Negative Differences between Your School's Averages and the National Averages**

Item #	Your Institution Avg	National Norms Avg	Difference
<b>Largest Positive (or Smallest Negative) Differences</b>			
24 Understanding/applying scientific principles/methods	2.21	2.02	.19
9 Following directions	2.10	2.08	.02
14 Recognizing your rights/responsibilities/privileges as a citizen	1.94	1.93	.02
16 Understanding/applying mathematics in your daily activities	1.88	1.88	-.01
18 Persisting at difficult tasks	2.37	2.39	-.02
<b>Largest Negative (or Smallest Positive) Differences</b>			
21 Leading/guiding others	2.03	2.27	-.24
11 Caring for your own physical and mental health	1.69	1.91	-.23
12 Working cooperatively in a group	2.21	2.41	-.20
5 Managing personal/family finances	1.63	1.81	-.18
3 Understanding written information	2.17	2.34	-.17

(Growth Scale: 3=very much, 2=somewhat, 1=very little)

NOTE: Items with fewer than 10 respondents were not included in the analyses.

ROGERS STATE UNIVERSITY

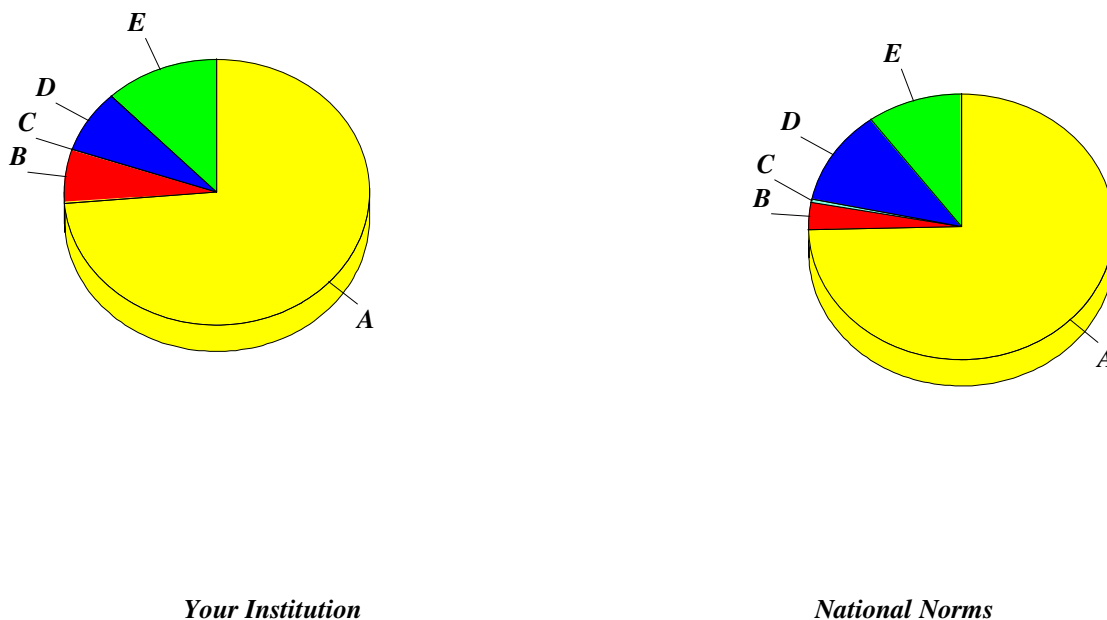


Figure 10. Section IV - Employment History, Item A: What are you currently doing?

Item #	Your Institution %	National Norms %
<i>Employed Full Time</i>	64.8	68.3
<i>Employed Part Time</i>	8.8	6.3
<i>Self-Employed (Farm or Business Owner, etc.)</i>	6.6	3.3
<i>Serving in the Armed Forces</i>	.0	.4
<i>Continuing My Education</i>	4.4	5.4
<i>Employed and Continuing My Education</i>	3.3	6.2
<i>Caring for a Home/Family</i>	.0	4.5
<i>Unemployed</i>	11.0	3.9
<i>Other</i>	1.1	1.8
<i>A. Employed Full/Part Time</i>	73.6	74.6
<i>B. Self-Employed</i>	6.6	3.3
<i>C. Serving in the Armed Forces</i>	.0	.4
<i>D. Continuing Education/Employed</i>	7.7	11.6
<i>E. Caring for Home/Family/Unemployed/Other</i>	12.1	10.1

ROGERS STATE UNIVERSITY

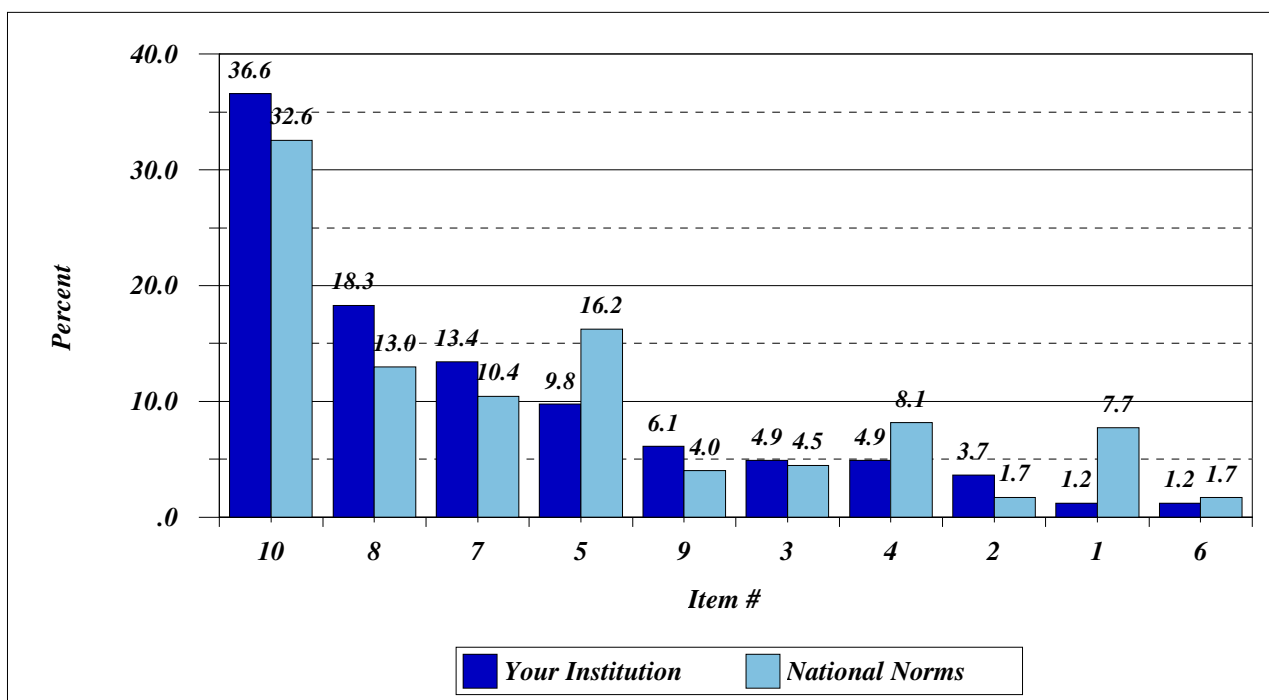


Figure 11. Section IV - Employment History, Item B:  
Source from which you learned about your first job after graduating from this college

Item		Your Institution %	National Norms %
10	Other	36.6	32.6
8	Recruited by Employer	18.3	13.0
7	Another Student/Friend	13.4	10.4
5	Newspaper/Trade Publication	9.8	16.2
9	Public/Private Employment Agency	6.1	4.0
3	Faculty at the College	4.9	4.5
4	Parent or Relative	4.9	8.1
2	College Counselor/Advisor	3.7	1.7
1	College Placement Office	1.2	7.7
6	Professional Meeting	1.2	1.7

ROGERS STATE UNIVERSITY

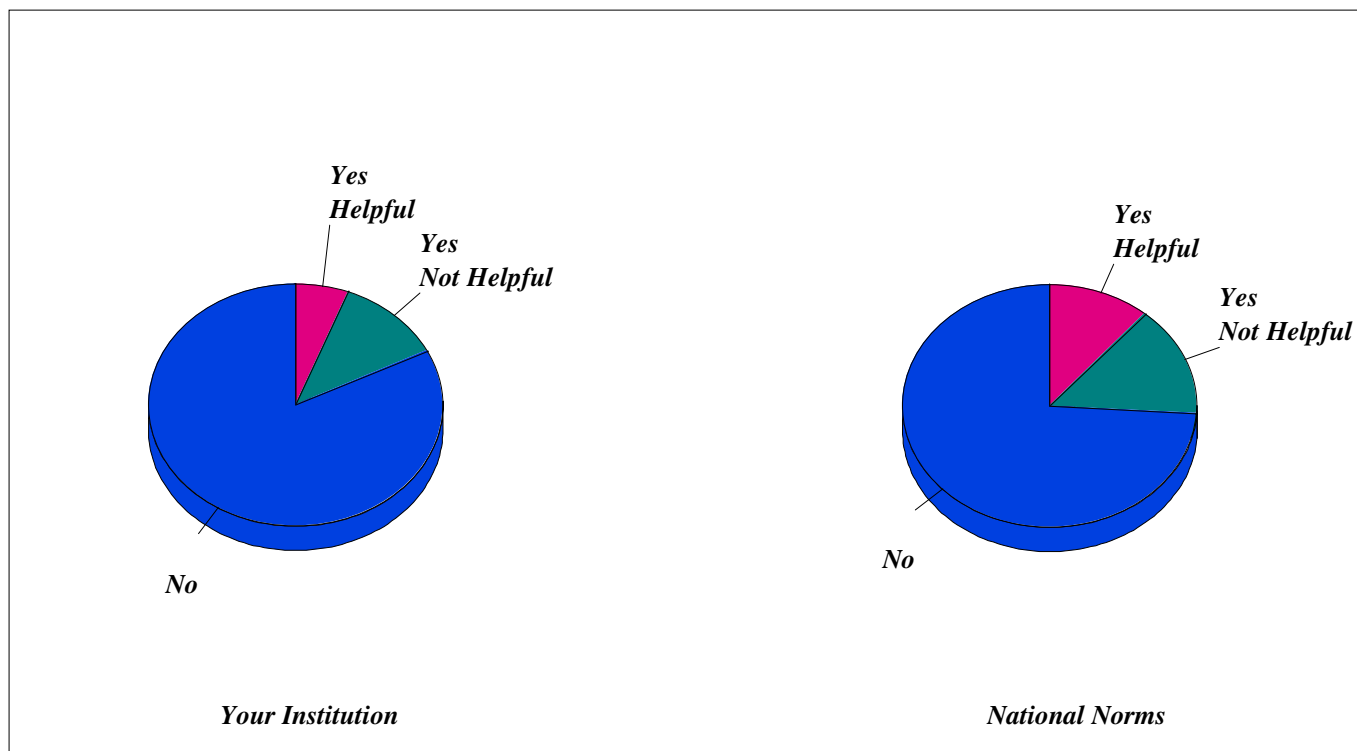


Figure 12. Section IV - Employment History, Item 1: Have you sought help from this college's placement office?

Item	Your Institution %	National Norms %
Yes, it has been helpful	5.9	11.3
Yes, but it has not been helpful	11.8	14.8
No	82.4	74.0

**ROGERS STATE UNIVERSITY**

***Section IV - Employment History, Item K: Current Annual Salary***

**Due to a change in the Section IV, *Employment History*, Item K: *Current Annual Salary*, we do not have normative data at this time to support the comparison to your institution's responses. Therefore, that page has been deleted from your report.**