



Center for Economic & Community Development

The Center for Economic and Community Development at Rogers State University prepared this Craig County profile containing demographic, economic, residential, and social data for the county. The Center is an affiliate agency of the Oklahoma Department of Commerce’s State Data Center Program and provides economic and demographic data. Available resources include a computer center with high-speed Internet access, a library of electronic and printed materials, and an on-site professional staff. The Center was established in 2002 to promote the region’s economic development by utilizing the university’s resources in partnership with local business, industry, and entrepreneurs. For more information, call (918) 343-7533. See page 8 for details.

Population

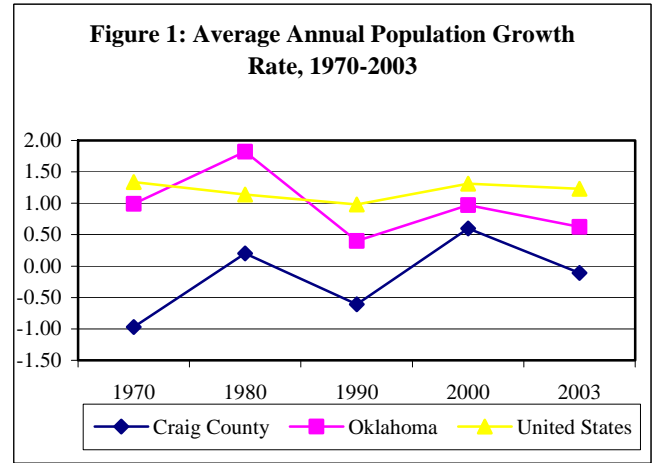
The population of Craig County has been stable over the last three decades. According to census data provided in Table 1, Craig County contained 14,722 persons in 1970 compared with 14,950 in 2000. Although there were minor changes over three decades, the population increased by only 1.5 percent. Likewise, the population of Vinita in 2000 was very similar to its population in 1970.

Table 1: Population for Craig County & Vinita, 1970 - 2000

Area	1970	1980	1990	2000	2003
Craig County	14,722	15,014	14,104	14,950	14,900
Vinita	5,847	6,740	5,804	6,062	5,970

Source: US Census Bureau

Figure 1 shows the average annual rate of growth for Craig County, Oklahoma, and the United States between 1970 and 2003. While the United States tended to grow fairly constantly at about one percent per year, Oklahoma and Craig County experienced swings in the population growth rate. According to Figure 1, the average annual rate of growth for Oklahoma increased from one percent to almost two percent during the 1970s and then dropped to less than one-half percent during the 1980s. During the 1990s the population growth rate increased again.



Source: US Census Bureau

These variations in the growth rate reflected the nature of the state’s economy. First the state experienced the boom in the oil industry in the 1970s followed by the bust in the 1980s. Migration during the boom and bust cycle first caused a rapid increase in population in the 1970s followed by a slow growth in the 1980s when people stopped moving to Oklahoma or left the state. During the 1990s the economy recovered somewhat and the population increased more rapidly but still at a rate slower than the United States. Consequently, Oklahoma lost one of its congressional representatives after reapportionment in 2000.

Although Craig County experienced a similar boom and bust pattern, the overall growth rates were lower than those of the state. The annual growth rates in Craig County fluctuated around zero percent compared with variations around one percent for the state. During the boom period of the 1970s, the state grew at almost two percent per year while the Craig County growth rate was barely positive. When the state grew at a much slower rate of about 0.4 percent in the 1980s, Craig County experienced a negative 0.6 percent growth rate. During the 1990s, Craig County rebounded and grew at an annual rate of 0.6 percent. This was similar to, but still less than that of the state (0.9 percent). The Census Bureau estimated that the 2003 population in Craig County dropped slightly. In summary, Craig County has experienced some fluctuations in population growth rates, but the County has been relatively stable with almost no growth and possibly a small decrease since 2000.

Craig County Profile

Sex and Age

Table 2 describes the population distribution by sex using the sex ratio. *The sex ratio is the number of males for every 100 females.* The sex ratio of 101.1 in Craig County means that there were 101.1 males for every 100 females. Thus, there were slightly more males than females in Craig County. The sex ratio for Craig County was higher than that of Oklahoma (96.6) or the United States (96.3). The sex ratio of Vinita was even higher than Craig County at 105.2 males for every 100 females.

Table 2: Population By Sex, 2000

Area	Male	Female	Sex Ratio
United States	138,053,563	143,368,343	96.3
Oklahoma	1,695,895	1,754,759	96.6
Craig County	7,515	7,435	101.1
Vinita	3,327	3,162	105.2

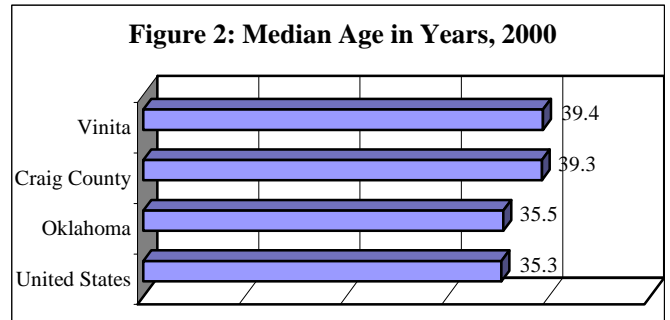
Source: US Census Bureau

In general, the sex ratio of an area often reflects its unique migration patterns. Females frequently move from rural areas to urban areas where white-collar occupations and career opportunities are more readily available. Rural areas traditionally offer relatively more employment opportunities in agriculture, mining, and forestry that retain or attract males while large urban areas attract females. In addition, older populations frequently move to urban areas where medical and support services are accessible. Females tend to outnumber males in older age groups. Migration of the elderly population plus migration of females for educational and occupational opportunities tend to decrease the sex ratio in urban areas and increase it in rural areas. Thus rural areas like Craig County have a correspondingly higher sex ratio than large urban areas.

The sex ratio in Craig County also reflected the presence of male inmates institutionalized at the Northeast Oklahoma Corrections Center. In 2000 there were 436 males age 18 or older who were institutionalized in correctional facilities. Only eight females were residents of correctional facilities and these were probably inmates in the county jail. There were an additional 229 institutionalized male residents who lived in psychiatric or mental institutions compared with only 50 females. Many were probably residents of Eastern State Hospital. Thus the sex ratio of Craig County reflects not only differential migration patterns for males and females but also the presence of substantial numbers of male inmates or patients compared to females.

The age composition of a population is commonly expressed by its median age. *The median age is the age*

at which half of the population is younger and half of the population is older.



Source: US Census Bureau

According to the data presented in Figure 2, the median age of the population of Craig County was considerably older (39.3) than that of Oklahoma (35.5) or the United States (35.3). Likewise the median age of Vinita is higher than state or national figures. The median age of a population also reflects migration patterns in the area. Since young adults tend to move to larger urban centers seeking higher education and career opportunities, small towns and rural areas tend to have an older median age. Large urban areas also attract higher concentrations of the elderly where medical care, support services and social amenities are more accessible. Thus significant migration of the elderly may offset the movement of younger adults into some urban areas.

A review of the age composition of the United States population presented in Figure 3 reveals an important observation. The age distribution shows the impact of the baby boom generation born after World War II. Unusually large numbers of infants were born between 1946 and 1965 reaching a peak in 1958. In 2000, the “baby boomers” were between 35 and 54 years of age. A baby boom “echo” was created when the large number of baby boomers became parents themselves. In 1988, 30 years after the peak in the baby boom, there was a peak in the baby boom echo. Consequently, those babies born during the baby boom echo were generally between the ages of 5 and 19 as shown on Figure 3. Thus, two peaks are seen with a dip in births between the baby boom and its echo.

An examination of Figure 4 reveals dramatic differences between the age distributions of Craig County and the United States. The most notable difference is the smaller percentage of young adults between the ages of 20 and 34 in Craig County relative to other cohorts under age 55. While declining birth rates between the baby boom and the baby boom echo produced smaller cohorts, the abnormally small number of young adults in Craig County is probably a result of out-migration. This is particularly evident if one compares the age and sex

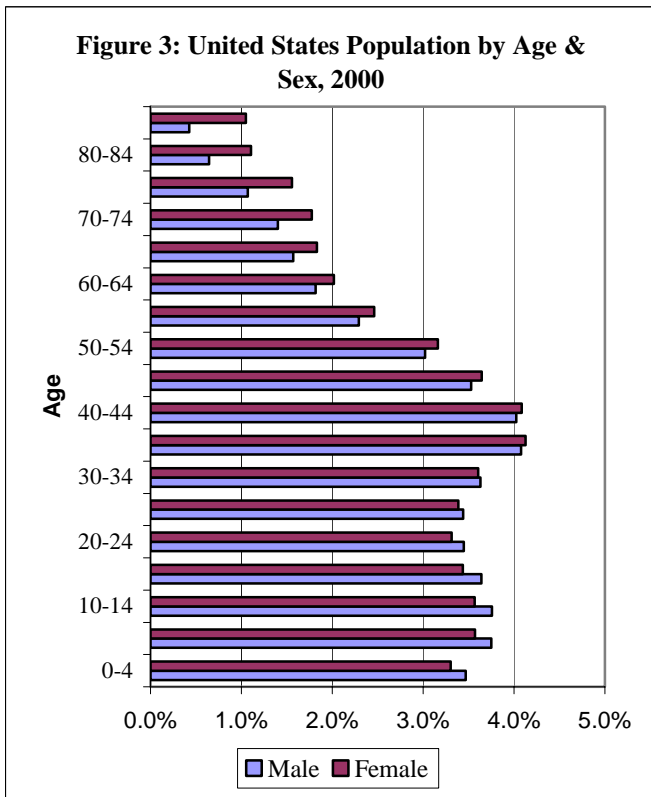
Craig County Profile

distribution of the population of the United States shown in Figure 3 with the distribution of Craig County shown in Figure 4. Craig County had significantly fewer persons who were 20 to 34 years of age. This was the age group most likely to have pursued higher education and career opportunities that required them to relocate. Craig County probably experienced significant out-migration of young adults. Since Craig County had relatively fewer young adults in the primary childbearing age between 20 and 34, the percentage of the population under 10 was also relatively less.

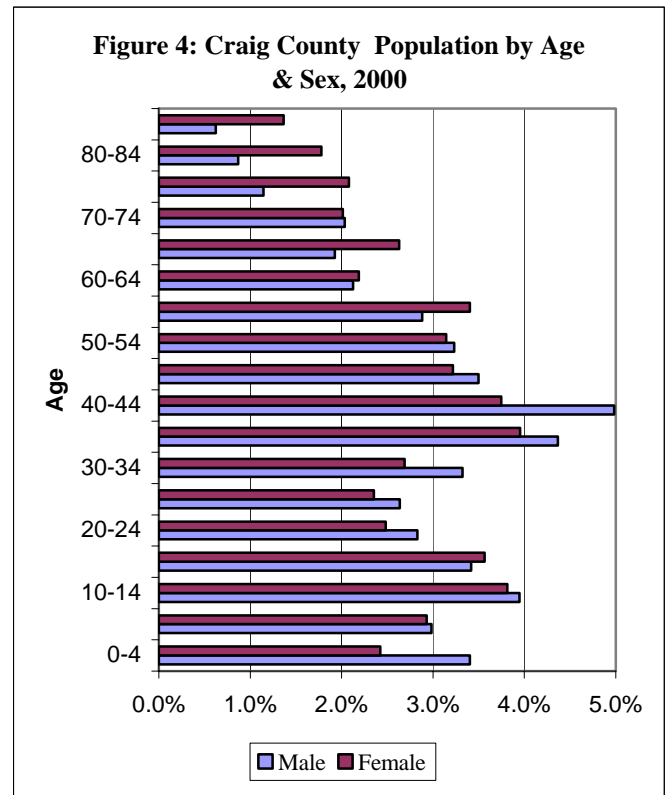
Figure 3 also shows that the number of males relative to the number of females varies by age in the United States. At birth, males outnumber females, but the higher death rate for males results in females outnumbering males by age 35 to 39. Higher death rates among males eventually cause females to outnumber males by more than 2 to 1 in populations over age 85. Figure 4 shows Craig County departs from that pattern at several ages. For example, females first outnumber males at age 15-19 and do not outnumber males again until age 55-59, which is 20 years later than observed in the national population. The larger number of females at age 15-19 might have been a random event since males outnumber females in all the other age groups until age 55-59.

The fact that males outnumber females at all other ages until age 55-59 reflects the presence of institutionalized male inmates at Northeast Oklahoma Corrections Center and male patients at the Eastern State Hospital. Some 436 male inmates were enumerated at the Northeast Oklahoma Corrections Center and 229 male patients resided at Eastern State Hospital.

The presence of more males than females between the age of 20 and 54 also reflects the difference in the migration patterns of the two sexes. Career opportunities for females are less numerous in Craig County so females migrate to other areas where opportunities are more common. By comparison, fewer males migrate since they have more job opportunities locally especially with the male correctional facility nearby. The under representation of females in Craig County is also consistent with national trends observed in higher education where males have become the minority. The evidence suggests that more females than males probably left Craig County to pursue higher education. The difference in the number of males and females at age 70-74 where males outnumber females is uncommon. This could be the result of chance variation based on a small population base, or the presence of elderly male prisoners.



Source: US Census Bureau



Source: US Census Bureau

Craig County Profile

Rural and Urban Distribution

According to Table 3, over 57 percent of the population in Craig County lived in rural areas and 43 percent lived in urban areas. *An urban area consists of a territory with at least 2,500 people that contained a cluster of census blocks having a population density of at least 1,000 people per square mile plus surrounding blocks of at least 500 people per square mile.*

Table 3: Craig County, 2000

	Population	Percent
Total	14,950	100.0%
Urban	6,387	42.7%
Rural	8,563	57.3%
Farm	1,415	9.5%
Non-farm	7,148	47.8%

Source: US Census Bureau

According to Table 4, five of the seven counties in northeastern Oklahoma had less than 50 percent of the population living in urban areas. Only Ottawa and

Washington Counties had more people living in urban areas than rural areas. Over 65 percent of the population in Oklahoma lived in urban areas compared with 79 percent nationally. In contrast to national and state averages, Craig County and most of the counties in northeastern Oklahoma had more people living in rural areas than in urban areas.

Table 4: Rural Urban Distribution, 2000

County	Urban	Rural
Craig	42.2	57.8
Delaware	16.7	83.3
Mayes	21.6	78.4
Nowata	43.1	56.9
Ottawa	50.8	49.2
Rogers	42.7	57.3
Washington	78.5	21.5
Oklahoma	65.3	34.7
United States	79	21

Source: US Census Bureau

Race and Ethnicity

Table 4 and Figure 5 illustrate the racial and ethnic composition of the residents of Craig County according to the 2000 Census.

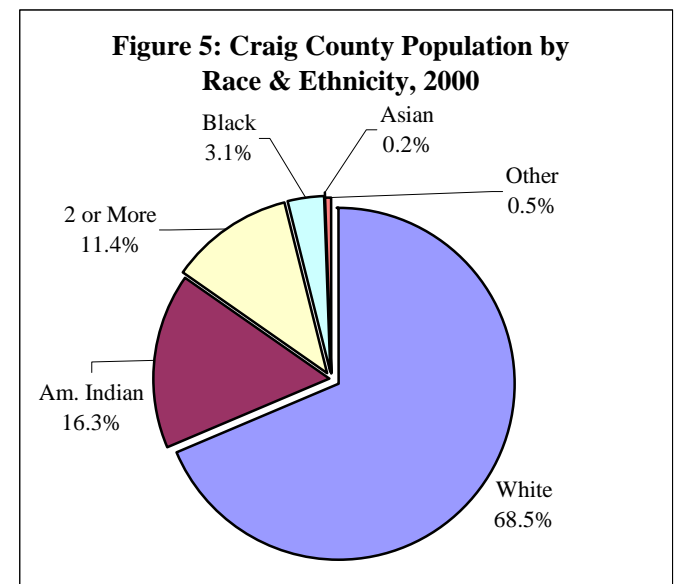
Thus, approximately 26.3 percent (16.3+10.0) of the residents considered themselves American Indian or American Indian and White. Black Americans comprised about 3.1 percent of Craig County population. Other ethnic groups composed less than one percent of the population.

Table 4: Population by Race and Ethnicity, 2000

Area	Vinita	Craig County
White	4,357	10,246
Black	396	462
American Indian	962	2,439
Asian	20	27
Other	40	76
Two or More	697	1,700
Total	6,472	14,950

Source: US Census Bureau

The largest group of residents, 68.5 percent, identified themselves as White. The second largest group, 16.3 percent, identified themselves as American Indian. The next largest group consisted of residents who identified themselves with two or more ethnic groups. This group represents about 11.4 percent of the total population. In data not presented here, 1,500 of these 1,700 residents, or 10 percent of the Craig County population, identified themselves as White and American Indian.



Source: US Census Bureau

Craig County Profile

Household Information

Information on households is presented in Table 5. Craig County contained 5,620 households with an average of 2.46 persons per household. Vinita had a slightly smaller household size with an average of 2.29 persons. The county had a household size very similar to the average for the State of Oklahoma (2.49) and slightly smaller than the nation (2.59). With regard to average family size, Craig County had slightly smaller families with an average of 2.97 persons per family compared to 3.02 for Oklahoma and 3.14 for the United States.

Table 5: Number & Size of Households, 2000

Area	Number of Households	Average Household Size	Average Family Size
Vinita	2,381	2.29	2.97
Craig County	5,620	2.46	2.97
Oklahoma	1,342,293	2.49	3.02
United States	105,480,101	2.59	3.14

Source: US Census Bureau

Table 6 shows that 70.2 percent of all households in Craig County were families and 29.8 percent were non-family units. By comparison 68.7 and 68.1 percent of households consisted of families in Oklahoma and the United States respectively.

Table 6: Percent of Households by Type, 2000

Area	Families	Families w/ children <18	Married Couples	Married Couples w/ children <18	Female Head	Female Head w/ children <18	Non Family	Alone	Alone 65+
Vinita	61.1	28.9	44.9	18.7	12.9	7.9	38.9	35.7	19.2
Craig County	70.2	30.9	57.3	23.1	9.7	5.8	29.8	27.0	13.9
Oklahoma	68.7	32.4	53.5	23.2	11.4	7	31.3	26.7	10.1
USA	68.1	32.8	51.7	23.5	12.2	7.2	31.9	25.8	9.2

Source: US Census Bureau

Thus, slightly more households in Craig County were composed of family units. Further analysis showed that the vast majority of non-family households consisted of individuals living alone and almost half of them were age 65 or older. As stated above, 29.8 percent of all households in Craig County consisted of non-family units while 27.0 percent of the households were individuals living alone and almost half (13.9 percent) were age 65 or older. The greatest concentration of elderly living alone was found in Vinita where almost one in every five households consisted of single member households where the member was 65 or older. This compared with 9.2 percent for the United States and 10.1 percent for Oklahoma. Thus, Vinita was twice as likely to have households occupied by single persons age 65 or over when compared to the national average. According to Table 6, relatively fewer households in Craig County contained female head of households than either Oklahoma or the United States. Only 9.7 percent of the households in Craig County had a female head of household compared to 11.4 percent in Oklahoma and 12.2 percent in the nation. The female head of households tend to be more concentrated in Vinita where 12.9 percent of the household units had a female head of household which is slightly higher than the rate observed in Oklahoma or the United States.

Housing

According to Table 7, 75.1 percent of the housing units in Craig County were owner occupied. The remaining 24.9 percent were tenant occupied. The rate of home ownership in Craig County (75.1%) was higher than that of Oklahoma (68.4%) or the United States (66.2%). The median value of housing units in Craig County (\$52,100) was much less than that of Oklahoma (\$70,700) and even farther below that of the United States (\$119,600). The median value of owner occupied homes in Vinita (\$49,600) was \$2,500 less than the county median. Tenants in Craig County paid a median

monthly rent of \$396.00 compared to the national rate of \$602.00.

Table 7: Housing Units

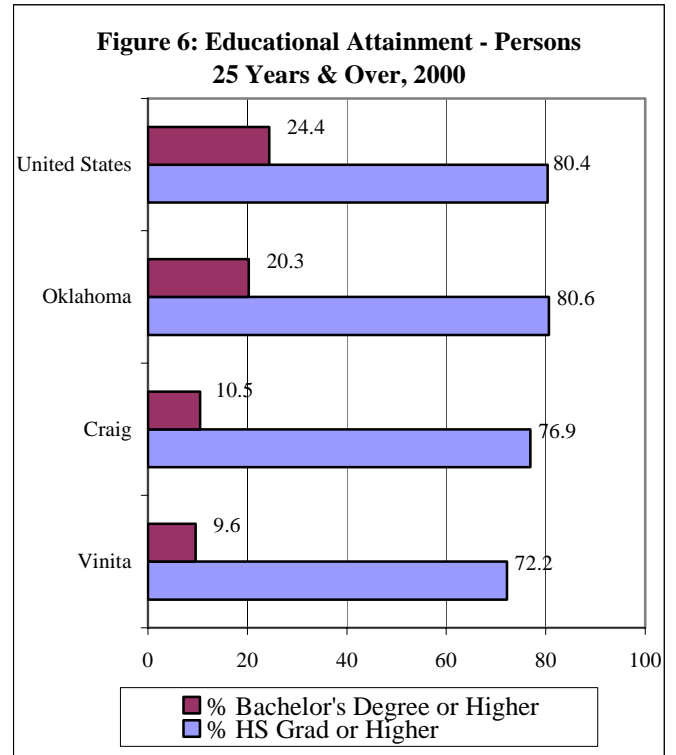
Area	Number Of Units	Percent Owner Occupied	Median Value	Median Monthly Rent
Vinita	2,694	66.4	\$49,600	\$400
Craig	6,459	75.1	\$52,100	\$396
Oklahoma	1,514,400	68.4	\$70,700	\$456
United States	115,904,641	66.2	\$119,600	\$602

Source: US Census Bureau

Craig County Profile

Education

Figure 6 shows that the educational attainment of residents in Craig County was below the level for Oklahoma or the United States. The differences were small at the high school level but significantly different at the college level. Approximately 77 percent of the residents of Craig County who were 25 years of age or older had completed high school compared with 80.6 percent for Oklahoma residents and 80.4 percent for United States residents. In contrast, only 10.5 percent of the Craig County residents had completed four years of college or more compared with 20.3 percent for Oklahoma residents and 24.4 percent of United States residents. Roughly one person in ten had completed college in Craig County compared to one in four nationally. A low level of educational attainment seriously handicaps economic development. A community needs an educated and skilled workforce in order to compete in the global economy. With the availability of cheap labor abroad, U.S. companies must be very productive to be competitive. Only 9.6 percent of the residents in Vinita completed a baccalaureate degree or higher. Thus Craig County and Vinita lagged significantly behind the average for the state.



Source: US Census Bureau

Income

Table 7 presents the information on income for Craig County residents. The median family income for Craig County (\$36,499) was somewhat below the median for Oklahoma (\$40,709). Table 7 shows that the income level varies within the County. For example, Vinita residents had a median family income of \$33,461. Per capita income, another measure of income, showed similar results. The per capita income for Craig County (\$16,539) was lower than that of Oklahoma (\$17,646) or the United States (\$21,587).

Table 7: Income, 1999

Area	Median Family	Per Capita Personal	% Families < Poverty
Vinita	\$33,461	\$13,980	14.3
Craig	\$36,499	\$16,539	10.9
Oklahoma	\$40,709	\$17,646	11.2
United States	\$50,046	\$21,587	9.2

Source: US Census Bureau

The per capita income for Craig County was 94 percent of the per capita income for Oklahoma and 77 percent of that of the United States. Part of the explanation of the lower income level is that high wage employment opportunities were less prevalent in Craig County. Nationally almost 28 percent of the families had incomes of \$75,000 or more while only 12 percent of the Craig families earned that level.

The percentage of families living below poverty is a measure of income distribution within a community. The proportion of the population living in poverty in Craig County (10.9%) was slightly lower than the state average (11.2%) but higher than the national average (9.2%). Thus the income level in Craig County was low relative to state and national levels, and the poverty level in the county was higher than the national level. In Vinita, 14.3% of the families lived below the poverty level.

Craig County Profile

Employment

Table 9 describes the occupational profile of the civilian population age 16 years and older who were residents of Craig County. Workers in Craig County were less likely to be employed in Management, Professional, and Related Occupations than workers in Oklahoma or in the United States. They were also less likely to be employed in Sales and Office Occupations but more likely to be employed in Service Occupations or in

Production, Transportation and Material Moving Occupations. Although only 1.8% of the workers were employed in Farming, Fishing and Forestry Occupations, that is double the rate for the state. Overall, the most significant difference for Craig County is the strength of the employment in Production, Transportation and Material Moving Occupations and the weakness of employment in Management, Professional and Related Occupations.

Table 9: Occupation of Employed Civilian Population, 16 Years & Over by Industry, 2000

<i>Occupation</i>	Oklahoma	USA	Craig County		Vinita	
	%	%	No.	%	No.	%
Management, Professional, & Related	30.3	33.6	1,527	24.0	523	21.9
Service Occupation	15.5	14.9	1,194	18.8	598	25.0
Sales & Office Occupations	26.6	26.7	1,454	22.8	570	23.8
Farming, Fishing, & Forestry	0.9	0.7	112	1.8	29	1.2
Construction, Extraction, & Maintenance	11.3	9.4	592	9.3	150	6.3
Production, Transportation, & Material Moving	15.4	14.6	1,487	23.4	523	21.9

Source: US Census Bureau

With regard to employment by industry, Table 10 shows that Craig County residents were more likely to be employed in Education and Health industries and less likely to be employed in Professional industries. Residents were also more likely to be employed in Transportation industries and in Agricultural industries. Within Vinita, the proportion of workers employed in

Education and Health industries exceeded 28% compared with roughly 20% in Oklahoma and the United States. The concentration in Education and Health industries may reflect employment not only in the public schools and the general hospital but also in the Eastern State Hospital where over 500 employees worked until the facility was downsized.

Table 10: Employed Civilian Occupation, 16 Years & Over, by Industry, 2000

<i>Industry</i>	USA	Oklahoma	Craig County		Vinita	
	%	%	No.	%	No.	%
Agriculture, etc.	1.9	4.1	394	6.2	42	1.8
Construction	6.8	6.9	378	5.9	86	3.6
Manufacturing	14.1	12.5	949	14.9	337	14.1
Wholesale Trade	3.6	3.4	247	3.9	103	4.3
Retail Trade	11.7	12	721	11.3	292	12.2
Transportation, etc.	5.2	5.6	588	9.2	186	7.8
Information	3.1	2.7	117	1.8	47	2
Finance, Insurance, etc.	6.9	6	220	3.5	101	4.2
Professional, etc.	9.3	7.3	280	4.4	129	5.4
Education, Health	19.9	20.5	1496	23.5	681	28.5
Arts, Entertainment	7.9	7.5	399	6.3	198	8.3
Other Service, excluding Public Administration	4.9	5.6	251	3.9	73	3.1
Public Administration	4.8	5.9	326	5.1	118	4.9

Source: US Census Bureau

Craig County Profile



Center for Economic & Community Development

Rogers State University established the Center for Economic and Community Development to foster economic development and address the educational needs of business and industry in northeastern Oklahoma. One of the primary functions of the Center is to assist entrepreneurs who wish to start or expand their business. The professional staff at the Center provides assistance with business plans, financial planning, management, marketing, production, and workforce training. The Center can also assist businesses with feasibility and marketing studies as well as survey research services. Most services are provided free of charge.

The Center is also a regional research and community data center. The Oklahoma Department of Commerce has designated the Center as an affiliate of the Business and Industry Data Center Program (BIDC). As an affiliate of the BIDC, the Center provides information, training, and technical

assistance to government, academic, and other non-profit organizations that directly serve business. In addition, the Center also conducts basic and applied research that focuses on the regional economy and population of northeastern Oklahoma. For additional information on available services, contact:

Ray Brown

Vice President for Economic and
Community Development
(918) 343-7533 – rbrown@rsu.edu

Bob Price

Business Development Specialist
(918) 343-7509 – rprice@rsu.edu

Lynn Wilson

Coordinator of Business Services
(918) 343-7533 – lwilson@rsu.edu

Rogers State University does not discriminate on the basis of race, color, national origin, sex, age, religion, disability, or status as a veteran in any of its policies, practices, or procedures. This includes, but is not limited to admissions, employment, financial aid, and educational service. 1,000 copies of this publication were printed at a cost of \$250.00.

